

44/79  
C  
M  
H  
180  
4.5  
VITRUVIUS BRITANNICUS,

OR  
*The British Architect,*  
Containing

The Plans, ELEVATIONS, and Sections  
*of the Regular Buildings, both*  
PUBLICK and PRIVATE,

IN  
GREAT BRITAIN,

*With Variety of New Designs; in 200 large Folio Plates, Engraven  
by the best Hands; and Drawn either from the Buildings themselves,  
or the Original Designs of the Architects;*

IN II VOLUMES

VOL. II. *By Colen Campbell Esq.<sup>r</sup>*

VITRUVIUS BRITANNICUS,

ou  
*L'Architecte Britannique,*  
Contenant

Les Plans, ELEVATIONS, & Sections  
*des Bâtimens Reguliers, tant*

*PARTICULIERS que PUBLICS*

*de la Grande Bretagne,*

*Compris en 200 grandes Planches gravez en taille douce par les  
Meilleurs Maitres, et tous ou desinez des Bâtimens memes, ou,  
copiez des Deseins Originaux des Architectes:*

EN DEUX TOMES.

TOME II.

*Par le Sieur Campbell.*

CUM PRIVILEGIO REGIS.

---

*Sold by the Author over against Douglas Coffee-house in St. Martins-lane, John Nicholson in  
Little Britain, Andrew Bell at the Cross-Keys in Cornhill, W. Taylor in Paternoster-Row, Henry  
Clements in St. Pauls Church-yard, And Jos. Smith in Exeter-Change. LONDON MDCCXVII.  
J. Short sculp.*



A N

# EXPLANATION

Of all the

## PLATES in the Second Volume.

White-hall, as design'd by Inigo Jones, from p. 2, to p. 19. inclusive.



**A**FTER much Labour and Expence I have at last procured these excellent Designs of *Inigo Jones*, for *White-hall*, from that ingenious Gentleman *William Emmet* of *Bromley*, in the County of *Kent*, Esq; from whose Original Drawings the following 5 Plates are published, whereby he has made a most valuable Present to the Sons of Art. In the First is the General Plan of the *Piano Nobile*, which contains 6 Courts; that next the Park is an exact Square of 245 Foot of each Side are two Squares of 250 by 125, being 2 Squares. The Middle Court next the River is 125 by 85, being a Diagonal; and the two Side-Courts this Way are proportioned, that the Length and Breadth are as 5 to 3. So that here is a variety of excellent Proportions, and all the Apartments are disposed either for State or Convenience, those to the River being most proper for the Summer Season, and those to the Park for Winter, having the *South-West* Sun. I have omitted the Ground Plan, which may be easily collected from this and the general Section. The second Plate is the Front to the Park, which is the *Banqueting-House*, with a Chapel corresponding to it: In the Middle is a noble Entry after the manner of a double Triumphal Arch; the Angles are terminated with two lofty Towers of an elegant Composition, and two *Capols* crown the Building. Our Architect has dress'd the Front with the *Ionick* and *Corinthian* Orders: In the third is the Front to the *Thames*, the Orders are *Dorick* and *Ionick*, as most proper for this Situation, with great Variety of the *Venetian* Windows; the Towers are the same as in the first and in the other Fronts: In the fourth is the Front to *Charing-Cross*, with a noble *Dorick* Arcade; the Superior Order is *Ionick*, and all the Ornaments are beautiful, graceful and significant; the Front to *Westminster* being the same is here omitted. In the fifth Plate is the general Section which discovers the three principal Courts, the great Piazzas, and height of the different Stories.

Covent-Garden, p. 20, 21, and 22.

**I** Have made one single and one double Plate of this noble Square, which for the Grandure of Design, is certainly the first in *Europe*. In the first Plate is the general Plan of the Piazza, the Plan, Section and *West* Front of that elegant Church, the only Piece the Moderns have yet produced, that can admit of a just Comparison with the Works of Antiquity, where a Majestick Simplicity commands the Approbation of the Judicious. In the double Plate are two Elevations of the great Piazza *Westwards*, and of the Church to the *East*; the Aspect is *Antes*, the Or-

der is *Tuscan*, *Tetrafile* *Areosfile*: The *Rustick* Arcade round the Square is of an excellent Composition, the Arches are 10 Foot wide and 20 high, the Piers are 4 Foot in Front, which is two Fifths of the Arch, and 8 at the Angles; above the Arcade is one grand Story and an Attick, the Windows are dress'd with a regular Entablature, in Width are equal to the Piers and two Diameters in height, the Attick Windows are under the Square. It were to be wished our Artificers would observe this just Proportion in Piers and Widows, which would prevent the Lanthorn way of Building so much in Practice of late Years.

The Royal-Exchange, p. 23, 24, and 25.

**T**HIS Structure was raised soon after the Fire of *London*, in the Year 1666, and however inferior to those Pieces of *Inigo Jones*, yet may very justly claim a Place in this Collection, being the most Considerable of this Kind in *Europe*; I have made one single and one double Plate: In the first is the Plan containing 205 Foot by 180; the second is the principal Front to *Cornhill*; in the Middle is a Piece of the *Corinthian* Order, with a very bold Arch, and two small ones of each Side; from this riseth a lofty Tower composed of 3 Orders: The *Rustick* Arcade in this Building is generally condemned by the Critics, for having Piers but one fourth of the Arch, which renders it weak.

Bow Steeple. p. 26.

**I** Have brought the Plans, Section and Elevation of this Tower into one Plate, and of this Kind 'tis esteemed one of the best in the Kingdom.

A Design for a Church of my Invention, p. 27.

**T**HE Aspect of this Church is *Profile*, *Hexastyle*, *Eustyle*, which by *Vitruvius*, *Palladio*, and the general Consent of the most judicious Architects, both Ancient and Modern, is esteem'd the most beautiful and useful Disposition, being a Medium between the *Picnostyle* and *Areostyle*, the first being too close and the last too open. The Order is *Ionick*, and in one Plate I have given 4 Designs: In the first is the Plan, where the Cella is 54 by 74, which is a Diagonal Proportion, the Side Walls are 6 Foot thick, and with 3 more for the Columns amounts to 9 Foot, which is one Sixth of 54, and the whole Width being 72, the two Walls make one Fourth of the same. The second Design is the Side of the Church, where I have abstained from any Ornaments between the Columns, which would only serve to enflame the Expence and clog the Building. In those admirable Pieces of Antiquity, we find none of the trifling, licentious, and insignificant Ornaments, so much affected by some of our Moderns. The Ancients placed their chief Beauties in the justness of the Intercolumnations, the precise Proportion

A

on



ons of the Orders and the greatness of Parts; nor have we one Precedent either from the *Greeks* or *Romans*, that they practised two Orders, one over another in the same Temple in the Outside, even in the most considerable, much less to divide it into little Parts; and whereas the Ancients were contented with one continued Pediment from the Portico to the Pasticio, we have now no less than three in one Side where the Ancients never admitted any. This Practice must be imputed either to an entire Ignorance of Antiquity, or a Vanity to expose their absurd Novelties, so contrary to those excellent Precepts in *Vitruvius*, and so repugnant to those admirable Remains the Ancients have left us. The third Design is the Front, where I have also obtained from any unnecessary Ornaments, the Door is dress'd after the best Models of Antiquity. The fourth is the Section, which shews the Elevation of the Inside and manner of the Vaulting: the whole Height is 54, equal to the Width, and that being divided into 4 Parts, one of them determines the height of the Vault, and the 3 other Parts are given to the perpendicular Wall. In the *East End* I have made a *Venetian Window*, which will sufficiently illuminate the whole Church; here I have practised an *Ionick Pilastrade* with Niches, and over them enriched Compartments.

York Stairs, p. 28.

**THIS** Gate was erected by the first Duke of *Buckingham*, when Lord High Admiral of *England*, Anno 1626, by *Inigo Jones*.

Cobham Hall in Kent, p. 29, 30.

**WAS** the Seat of the Dukes of *Lenox* and *Richmond*, now of the Lady *Theodosia Blyth* and *John Blyth Esq*; 'Tis a large ancient Fabrick, and has one Front by *Inigo Jones*, with a *Corinthian Pilastrade*, and an Attick of the highest Proportion and Balustrade; the great Hall is two Stories high.

Cholmondeley Hall in Cheshire, p. 31, 32, 33 and 34.

**IS** the Seat of the Earl of *Cholmondeley*, of which I have made 4 Plates; the first is the general Plan of the first Story, being a large Quadrangle open to the North: The second is the North Front dress'd with a *Corinthian Pilastrade*, and a proper Balustrade: The third is the South Front with the same Ornaments; and the last is the West Front with six Columns. The whole Fabrick was rebuilt and finished in a sumptuous manner in the Year 1715: Here are fine Gardens, and all is agreeable to the Magnificence of the noble Patron.

Eaton Hall in Cheshire, p. 35 and 36.

**THE** Seat of Sir *Richard Grosvenor Bart.* in two Plates; the first contains the general Plan of the Offices and principal Story, which is very Handsom and Commodious; in the Plan one may observe a great Regard to State and Convenience, the Size of the Rooms being judiciously varied, and generally the Rules of Proportion are maintained in all the Apartments: In the second Plate is the Front of the House and Offices, the Corners are dress'd with Rusticks of a good Taste, and the Fabrick is crown'd with a *Cupola*.

Belton in Lincolnshire, p. 37, 38.

**THIS** is the Seat of Sir *John Brownlow Bart.* in 2 Plates; the first contains the Plans of the two principal Stories, where are many very good Apartments, noble and convenient: The second is the Front in which the Windows are handsomely dress'd with Architrave, Frieze and Cornice, and the whole Composition is regular; here are curious Gardens, a large Park, and many other Improvements.

But above all the polite Literature, the great Civility, and uncommon Generosity of the Patron deserves to be transmitted to Posterity.

High-Meadow in Gloucestershire, p. 39, 40.

**THE** Seat of *Thomas Gage, Esq*; in two Plates; the first contains the Plans of the two principal Floors: The second is the Front which has a noble Entry, the Windows are well dress'd, but the Piers are too narrow, and in the Wings the large Space from the Window to the Corner has a good Effect.

A New Design for *Tobias Jenkyns, Esq*; p. 41, 42.

**I** Have inscribed this small Essay of my Invention to this ingenious Gentleman, whose Knowledge in the most polite Learning is equal to his extream Modesty, in endeavouring to conceal what so many do falsely assume, and his particular Attachment to Architecture must draw a deep Respect from all that profess any Love or Esteem for that useful and noble Art. In the first Plate is the Plan of the first Story, extending 120 Foot, here is the double and single Cube, the Hall being 27 by 54; here is 18 by 27, which is the *Sesqui altera*, and 21 by 27, the *Sesqui tercia*, and you pass gradually from the larger to the lesser. Right against the Entry I have placed the great Pair of Stairs, which is free and spacious, and leads up to the principal Story which is the same with the first, excepting that the Salon which is over the Hall, is 27 Foot high and has two Degrees of Windows; the two pair of Back Stairs go from the Foundation to the Top, and will serve all the Apartments: In the second Plate is the Front with a Rustick Basement and two Orders of Pilasters in the Theatrical, which admits of more Gayety than is proper either for the Temple or Palatial Style.

Boddington Place in Surrey, p. 43, 44, 45.

**IS** the ancient Seat of Sir *Nicholas Carew Bart.* of which I have made 3 Plates; the first contains the Plans of the two principal Floors, where is a very noble Hall, in Height two Stories, and many large and spacious Apartments: In the second is the West Front dress'd with a Composite Pilastrade and other Ornaments: The third Plate is the Garden Front, and tho' more plain yet has a good Effect by reason of the large Solids between the Windows. The House stands in a large Park, the Gardens are very curious and artful, the Orangery is esteemed the best in the Kingdom; here is great Plenty of excellent Water, with Canals and Cascades; and indeed every thing is truly worthy of so generous a Patron, who has spared no Cost to rebuild and imbellish his Seat.

Mr. Hudson's House at Sunbury in Middlesex, p. 46.

**I** Have given the general Plan of the first Floor and Offices with the general Front in one Plate, the Apartments are handsom, the Furniture sumptuous, and the Offices commodious; and tho' there is but little Ornament in the Outside, the Materials being good and the Work well executed, it makes a fine Appearance: Here are fine Gardens with a charming Prospect to the *Thames*; it was designed and conducted by Mr. *Fort*, Anno 1712.

Mr. Waller's House in Beaconsfield, p. 47.

**I** Have also given the general Plan of the Offices and first Floor, with the general Front in one Plate; the Offices are joined to the House, with a handsome Corridor of the *Corinthian Order*, designed by *Thomas Milner Esq*; Anno 1712.

Mr. Rooth's House at Epfom, p. 48, 49.

**IN** the first Plate you have the Plans of the first and second Story, and in the second is the Front, and tho'

tho' but of small Extent, yet is most conveniently laid out and well finished.

*Melvin House in Scotland, p. 50.*

THE Seat of the Earl of *Lewin*; in this Plate I have given the Plan of the principal Story and Front; here is a very good Salon with two noble Apartments, with two convenient Back Stairs; it was designed by the most experienced Architect of that Kingdom, Mr. James Smith, Anno 1692.

*Mr. Campbell's House at Glasgow, p. 51.*

Daniel Campbell of *Shawfield* Esq; has built this House after my Design, in *Glasgow*, the best situated and most regular City in *Scotland*: The principal Apartment is in the first Story, the Stair-case is so placed in the Middle as to serve 4 good Apartments in the second Story; the Front is dress'd with Rusticks of a large Proportion, and a *Doric* Cornice and Balustrade; the Garrets receive Light from the Roof inwardly; the whole Building is of good Stone and well finished, Anno 1712.

*A New Design for a Person of Quality in Somersetshire, p. 52, 53, 54, 55.*

THE first Plate presents you with the general Plan of the Offices and principal Floor rais'd 10 Foot above the Court, which lands in a Portico, from thence to a noble Sale and Salon, and of each Side a grand Apartment: The second Plate is the principal Front adorned with a *Corinthian* Tetrastyle and Pediment: The third is the Garden Front, and the last is one End with a fine *Venetian* Window, with several other Embellishments, all designed by the learned and ingenious Sir *John Vanbrugh*, 1716.

*Maiden Bradley in Wiltshire, p. 56.*

IS the Seat of Sir *Edward Seymour* Bart. In this Plate I have given the general Plans of the two principal Stories both of the Offices and best Apartments, with the Elevation of the Fronts; the Windows of the first are well dress'd with Pediments, and the second have Windows with Architrave, Frieze and Cornice only: It was begun by the late Sir *Edward*, and finished by the present in a handsome manner.

*Hampton Court in Herefordshire, p. 57, 58.*

IS the ancient Seat of the Lord *Coningsby*, built by *Henry IV.* King of *England* when he was Duke of *Hereford*, above 300 Years past, which is the oldest Building in this Collection: His Lordship has lately repaired it with great Expence and Magnificence; here are 7 very noble Apartments richly furnished, with many convenient small ones; here are also fine Gardens, a large Park, a well stock'd Decoy, and all other Advantages both for Pleasure and Convenience, and truly worthy of so noble and polite a Patron.

*Shobden Court in Herefordshire, p. 59, 60.*

THE Seat of Sir *James Bateman*, Bar. Lord Mayor of *London*, of which I have made two Plates; the first contains the Plan of the principal Floor, where is a lofty Hall, in height 2 Stories, and 4 good Apartments: The second is the Front with Rustick Corners and a Pediment: Sir *James* is now improving his Gardens and Plantations, with many other Embellishments, as lasting Monuments of his Magnificence.

*Wilton, from p. 61 to p. 67, inclusive.*

THIS is the ancient Seat of the Earls of *Pembroke* and *Montgomery*, begun in the Reign of *Henry VIII.* The great Quadrangle was finished in the Time of *Edward VI.* and the Porch was design'd by *Hans Holbin*. The Hall Side being burnt

about 12 Years ago, was rebuilt by the present *Thomas* Earl of *Pembroke*, then Lord High Admiral of *England*, in a very noble and sumptuous Manner.

The other Parts rebuilt by the first *Philip* Earl of *Pembroke*, who was Lord Chamberlain, being all designed by *Luigo Jones*, and finished by him in the Year 1640, are what I have here published, 1 double and 5 single Plates. In the first are the Plans of the two principal Floors, with the Garden Front 194 Foot long, which is justly esteem'd one of the best Pieces of that great Architect: 'Tis universally acknowledged that the grand Apartment is one of the noblest Architecture has yet produced, particularly the Sale and Salon, whose Sections I give in the following Plates. In the first you have the Section of the Sale, long 60 Foot, high 30, and in Breadth the same; in one end of the Room is the celebrated Family Picture by *Pandyeke*, 20 Foot long and 12 high, containing 13 Figures as big as the Life, which rather appear as so many real Persons than the Production of Art, and all the other Pictures in the Section are of the same incomparable Hand; in the second Plate is the first Section of the same Room towards the great geometrical Stair-Cafe, the first of this kind in the Kingdom, with a rich and magnificent Door-Cafe; in this Plate is also the Section of the Salon, which is a Cube of 30 Foot: In both these Rooms, and in most of the other Apartments, are Marble Chimney Pieces of the most exquisite Work and most elegant Composition I have seen in the Kingdom, all carved in *Italy* and brought over by the first *Philip* Earl of *Pembroke*, with many curious Statues, *Basso Relievo's*, and other things of Marble, and Pictures of the most famous Masters. The third is the Loggia in the Bowling-Green, with an *Ionick* Arcade; the Pilasters are most beautifully rusticated, and the Design is enriched with Niches and Statues: In this Plate also is the Grotto, the Front being curiously carved without, and all Marble within, having black Pilars of the *Ionick* Order, with Capitels of white Marble and 4 fine *Basso Relievo's* from *Florence*. In the same Plate is 1 Side of a Rustick *Ionick* Door, in the Garden whereof there are 2 fronting each other two ways. The fourth is the Stables disposed in a very handsome Manner. The fifth is a Rustick Gate, which may serve for a Model to direct our Workmen on the like Occasion; the Columns frosted on each side this Gate are on the Stable-Bridge. There remains so much to be said of this charming Place, that to give a true Account of it would require an entire Volume of a much more artful Pen; but I hope this will be accepted of by the candid Reader as sufficient from me till I publish my Third Volume in, Perspective, where I intend a more ample Description.

*Longleat, in Wiltshire, p. 68, 69.*

THE Seat of the Right Honourable the Lord Viscount *Weymouth*, founded by Sir *John Thynne*, the great Restorer of that ancient and honourable Family, in the Reign of *Edward the Sixth*, and of this Date, is esteem'd to be the most regular Building in the Kingdom, being above 160 Years ago. In one double Plate I have given first the Plans of the two principal Floors, where is a noble Hall in Height two Stories, the Apartments are numerous, large and sumptuous; in the third Story, not here designed, is a spacious Gallery, and in the same Line a very curious Library, in all 220 Foot long, besides 4 handsome Apartments in the Gallery. In the Library is an excellent Collection of the best Authors of the most correct Editions, with many rare and valuable Manuscripts. The Front is of a large Extent, being 220 Foot long, and adorned with three Orders of Pilasters, the *Doric*, *Ionick*, and *Corinthian*, with their proper Pedestals; the Proportions of each Order, their Intercolommation and gradual Diminution is duly observed, and the Fabric is crowned

crowned with a handsome Balustrade, several Cupola's and Statues, erected by the late Lord; who also greatly adorned this Seat by the noble Gardens, Fountains, Canals, perpetual Cascades, curious Plantations, and many other magnificent Monuments of his Grandeur.

Cliefden House, in Buckinghamshire, p. 70, 71, 72, 73, and 74.

THE Seat of the Right Honourable the Earl of *Orkney*, founded by the late Duke of *Buckingham*, but greatly improved and adorned by the present noble Patron, who after the dangerous Fatigues of thirty Campaigns, (*forſan & hæc olim meminſſe juvabit*) with immortal Honour to himself and Country, has now the Pleasure of this delightful Retreat, when the Buſineſs of his King and Country does not call for his Service. I have made one ſingle and two double Plates; in the firſt is the general Plan of the Offices and firſt Story, the Apartments are noble, richly furniſhed, and commodious. Here is one of the moſt conſiderable Terraces in the Kingdom, being 24 Foot above the Parterre, and is as high as the Level of *Windſor Caſtle*, and is 433 Foot long, adorned with a curious Balustrade of *Portland Stone*; under the great Court in Front are arched Corridores that communicate from one ſide of the Offices to the other; a thing of great Uſe and Convenience: Here is alſo a curious Grotto, with a great Number of large and ſpacious Vaults, and many other ſubterraneous Conveniences. The ſecond and third Stories contain many fine Apartments magnificently furniſhed. The ſecond Plate is the chief Front to the North, having the Offices joined to the Houſe by Corridores of the *Ionick Order*, deſigned by *Mr. Archer*. The third Plate is the South Front with the fore-named Terraçs, which affords one of the moſt beautiful Proſpects in the Kingdom.

Hopeton-houſe, in Scotland, p. 75, 76, and 77.

IS the Seat of the Right Honourable the Earl of *Hopeton*. The Deſigns were given by *Sir William Bruce*, who was juſtly eſteem'd the beſt Architect of his time in that Kingdom; it was begun about the Year 1698, and finiſhed four Years after. I have made one ſingle and one double Plate; the firſt contains a general Plan of the Offices and firſt Story, where is a Portico, Hall, and 4 very handſome Apartments; in the middle is a Geometrical Octagon Stair-Caſe, which leads up to the ſecond Story, and over the Hall is a noble Salon and the ſame Number of Apartments as below, and all well finiſhed and ſumptuouſly furniſhed. The ſecond Plate gives the general Front of the Houſe and Offices, the whole being executed in very good Stone; the Windows are well-proportion'd and handſomely dreſt, the Façade is rufſicated in the *French Manner*, and finiſhed with Rail and Balustrade, Statues, Vaſes, and a Stone Cupola over the great Stair-Caſe.

Lowther Houſe, in Weſtmoreland, p. 78, 79, and 80.

THE Seat of the Right Honourable the Lord Viſcount *Lonsdale*, in a ſingle and 1 double Plate. The firſt is the general Plan of the Offices and principal Story extending 337 Foot; here are ſtately Apartments, Corridores, large Galleries, a noble Library and Chapel. In the ſecond Plate you have the general Front, in Height three Stories; the Windows of the middle Story are dreſt with Pediments in a very handſome manner; the Fabrick is finiſhed with a Balustrade, Figures and Vaſes, and a large Pediment at each End, which has a good Effect: Here are fine Gardens, a noble Park, and many other uſeful and magnificent Improvements, anſwerable to the Grandeur of ſo noble and generous a Patron.

Braman Park, in Yorkſhire, p. 81 and 82.

THE Seat of the Right Honourable the Lord *Bingley*. In one double Plate is firſt the general Plan of the Principal Story extending 240 Foot, including the Pavilions. The flooping Terraçs leads up to the grand Floor, where is a noble Hall an exact Cube of 30 Foot, moſt artfully decorated, and all the Apartments are ſpacious and convenient; above is an Attick Story for the Family, and two Stair-Caſes that are very well illuminated by raiſing the inward Walls above the Leads. The Front is of an elegant tho' plain Manner, with a regular Cornice and Balustrade; the Pavilions are joined to the Houſe with two *Tuſcan* Colonades. Here are curious Gardens laid out with great Judgment, and all the other additional Improvements were happily finiſhed by the noble Patron, *Ann*, 1710.

A new Deſign inſcribed to *Mr. Walpole*. p. 83 and 84.

IN this Deſign of my Invention, I have endeavour'd to introduce the *Temple* Beauties in a private Building. The Plan of the principal Houſe is a Square of 100 Foot. In the Ground Story, which is 20 Foot high, the Hall under the Salon is divided with 4 Columns both to ſupport the Floor and Proportion the Room: The Plan deſcribed here is that above, to which you aſcend by a double Stair-caſe without, which leads into a noble Salon, being a Cube of 40 Foot; here are four Apartments, and over them is the Bed-Chamber Floor: The Offices are joined to the Houſe by 2 Galleries; the Towers are 40 Foot each, and the Galleries 60 Foot, ſo that the whole Extent is 300, the Houſe making one third. In the Front you have a large Ruſtick Baſement, which ſupports an Octaſtyle of the Composite Order, where a lofty Pediment covers the entire Fabrick: The Towers are ſet at a convenient Diſtance, and are dreſt with a *Tuſcan* Arch and Attick; in one you have the Chapel, &c. and in the other a Library, &c. What is moſt remarkable in this Deſign is, that it has the Appearance of a large and magnificent Structure, when in Effect it is of a moderate Bigneſs, being no more than a Square of 100 Foot.

Chevening Houſe in Kent, p. 85.

THIS was the Seat of the Right Honourable the late Earl of *ſuffex*, now of the Right Honourable *James Stanhope*, Eſq; principal Secretary of State. In this Plate I have given the Plans of the 2 Principal Stories, where the Apartments are very good and the Rooms large and well-proportion'd; the Windows in the Front are regular and dreſt with a proper Architrave Friſe and Cornice; over the ſecond Story are Attick Windows, and a regular Entablature crowns the whole Building, and is ſaid to be deſigned by *Inigo Jones*.

A new Deſign inſcribed to *Mr. Secretary Stanhope*. p. 86.

IN this Eſſay of my Invention I have given the two principal Plans; in the firſt is a Cube of 30 Foot, with a large Apartment on each ſide, in which is a Variety both of Size and Proportions; in the middle is a handſome Stair-Caſe, with Light from above, and behind it a Garden-Room; in the ſecond Plan are 4 Apartments and a convenient Library; on each ſide is a circular Pair of back Stairs, and above this is an Attick Story for the Family. The Front is richly dreſt with a large *Corinthian* Colonade of 1 Columns, and a leſſer Pilaftrade of the ſame Order to diſtinguiſh the two Stories; at the two Angles are 2 ſmall 1/2 Columns which ſupport a *Mars* and *Pallas*, as *Palladio* has done in the Palace of *Vimaran* at *Vicenza*, whoſe Example I think a ſufficient Authority.

*Sir*

*Sir Charles Hotham, Bart. his House at Beverly in Yorkshire, p. 87.*

AT the Desire of this worthy Gentleman I gave the following Design, who in Harvell last laid the Foundation of it and finish'd the Vaults, and intends this Summer to cover in the House with Lead. It being a Cube of 56 Foot, here are the Plans of the two Principal Stories. The first is 14, the second is 13, and the third is 11 Foot high; the Proportions of each Room are all exactly figured in the Plate. In the Front the Windows of the first Story have Pediments, the next have Architrave Frieze and Cornice, and the third has Attick Windows, all regularly dress'd, and at proper Distance, an Observation never to be neglected: Here is also a handsome *Ionick* Porch; All the Ornaments are of *Roeb Abby Stone*, being esteem'd the best in the Kingdom; the Fabric is crown'd with a regular Cornice and Balustrade: The Offices are joined to the House by a Rustick Arch of each side, which, in my weak Opinion, has no ill Effect; and upon the whole I have endeavour'd to render it worthy of so generous and honourable a Patron.

*Chester-Lee-street in the Bishoprick of Durham, p. 88.*

THE Seat of *John Hedworth, Esq;* for whom I made this Design. In this Plate you have the general Plan of the Principal Floor, extending 128 Foot, of which the main House has 64 and 48 Foot deep; the other half is equally divided between the Offices of each Side: The Front is South, and the North Prospect not being very favourable, is the Reason why I have made no Windows in that Side but to the two Stair-Cases; the Windows in the first Story are without Pediments, the better to set off that of the Door-Cafe, but I have used them in the second Story: There being sufficient Space from the Windows to the Coines, I have dress'd them with large Rusticks of different Lengths, as most proper to exprest the true Office of those Stones, which is to cross-bind the Angles, and not as the *French* and some others have introduced them, of the same Extent in Place of Pilasters. The Roof is flat with Cornice and Balustrade.

*A new Design inscribed to Mr. Secretary Methuen, p. 89 and 90.*

I HAVE made two Plates of this Design: In the first are the Plans of the two Principal Stories; the first is rais'd 6 Foot above the Court, where is a spacious Hall of 60 by 30 Foot, and in Height 21; but to preserve a due Proportion, as I have often observ'd, 'tis subdivided by 4 Columns into three Parts, so as the middle becomes a Square: In this Story are 4 very good Apartments all exactly figured, and two Pair of winding Stairs. The great Pair of Stairs lead up to the *Piano Nobile*, where is a lofty and spacious Salon of the same Extent as the Hall below, but has 30 Foot in height, which makes two Cubes, here are 4 very handsome Apartments both for State and Conveniency, and the whole Extent of this Plan is 100 by 70 Foot. In the second Plate you have the Front in the Theatrical Stile, with a Rustick Basement supporting two and in the middle three Orders to give a sufficient height to the Salon, over all the small Rooms next the Back Stairs are Interfoles.

*High Wittham in Somersetshire, p. 91, 92.*

THE ancient Seat of *Sir William Windham, Bart.* in two Plates: First the general Plan of the principal Floor where is a noble and spacious Hall, with many large and handsome Apartments, and when the whole Design is finished, there will be abundance of State and Accommodation. In the second Plate is the Front to the Gardens, with a Composite

Hexastyle, which makes a beautiful Portico, to the Court; the rest of the Front is adorned with a Pilastade of the same Order, over which is an Attick and Cupola, and many other Decorations that sufficiently exprest the Magnificence of the generous Patron. *Anno 1717.*

*Dyrham House in Gloucestershire, p. 91, 93.*

THE Seat of *William Blatbway, Esq;* First I have given the general Plan of the principal Story, which is very large and convenient, with a Variety of very good Apartments. In the second Plate is the Garden Front extending 130 Foot; the first Story is entirely rusticated, and the Coines to the Cornice. In the second Story the Windows are dress'd with alternate Pediments, over which are Attick Windows, which is finished with a handsome Cornice and Balustrade, adorned with Trophies and Vases of an excellent Choice; and the learned Patron has spared no Expences in leaving such lasting Monuments of his Liberality. The Design was given by the ingenious *Mr. Talmes, Anno 1698.*

*Newbold-Hall in Warwickshire, p. 94.*

IS the Seat of *Sir Fullwar Skipwith, Bart.* In this Plate I have design'd the Plans of the two principal Stories; in the first is a spacious Hall in Height two Stories, with many large and convenient Apartments; in the Front the Coines are rusticated after the *French* manner, and finish'd with a regular Cornice, Balustrade, and other proper Ornaments. *Anno 1716.*

*Althrop in Northamptonshire, p. 95, 96, 97.*

THE Seat of the Right Honourable the Earl of *Sunderland*, of which I have made 1 single and 1 double Plate. In the first are design'd the Plans of the two principal Stories, where are great Variety of noble and spacious Apartments, extending 140 Foot in Front, and deep 180. Here is a very large Stair-Cafe, and in the second Story a most magnificent Gallery 120 Foot long, richly adorned with many excellent original Pieces of the most celebrated Painters, particularly of *Vandyke*. Here is also a most curious and valuable Library, and the whole is finish'd and adorned in a very sumptuous Manner, answerable to the Magnificence of the noble Patron. In the second Plate I have design'd the principal Front, which is dress'd with two Orders of Pilasters, the *Corinthian* and *Composite*, and which are continued round the whole Building; the second Order is remarkable in having no Architrave or Frieze, but only a Cornice, over which is a Balustrade. It was built by the late Earl, in the Year 1688.

*A new Design inscribed to the Lord Cadogan, p. 98, 99, and 100.*

OF this Essay of my Invention I have made 1 single and 1 double Plate. In the first I have given the Plans of the two principal Stories, being 180 Foot in Front and 150 deep; the first Floor is rais'd above the Court by 4 Steps, which leads into a Hall 44 Foot square and 24 Foot high, but divided as in my other Designs, with 4 Columns; here are 4 large Apartments, and over the small Rooms are Interfoles. In the middle is the great Stair-Cafe 44 Foot Square, with a Corridore round of 10 Foot, which is of singular Use to the whole House in passing from one Apartment to another. In the second Story, which is the *Piano Nobile*, is first a Salon an exact Cube of 44 Foot, with a very noble Apartment of each Side; to the Garden Front is a large Gallery 110 Foot long, 30 broad, and in the Height the same, with a great Apartment at each End; here are convenient Back Stairs and an Attick Story for the Family. The Front is in the *Pallatial* Stile, where

where a large Rustick Basement supports an *Ionick* Colonnade of 4 Columns 4 Foot Diameter, and in Height 36. I have returned the Angles with Pila-

sters to strengthen the Coines, the Fabrick is crown'd with a regular Entablature and Balustrade, and with it I finish this Second Volume.

*A LIST of what is contain'd in the Second Volume.*

Numbr.	Fronts.	Numbr.	Fronts.
1 Title Page	1	53 Principal Front, <i>ditto</i>	1
2 Plan of <i>White-Hall</i> , by <i>Inigo Jones</i>	2	54 Garden Front, <i>ditto</i>	1
3		55 One End, <i>ditto</i>	1
4		56 <i>Maiden Bradley</i> in <i>Wiltshire</i>	1
5 Front to the Park, <i>ditto</i>	4	57 Plan of <i>Hampton-Court</i> in <i>Herefordshire</i>	1
6		58 Front, <i>ditto</i>	1
7		59 Plan <i>Shobden-Court</i> in <i>Herefordshire</i>	1
8		60 Front, <i>ditto</i>	1
9 Front to the River, <i>ditto</i>	4	61 { Plans and Garden Front of <i>Wilson</i>	2
10		62	
11		63 Section of the great Dining-Room	1
12		64 Section of the Cube Room	1
13 Front to <i>Charing-Cross</i> , <i>ditto</i>	4	65 Front of the Grotto and Arcade	1
14		66 Plan and Front of the Offices	1
15		67 The great Rustick Gate	1
16		68 { Plans and Front of <i>Longleate</i>	2
17 General Section, <i>ditto</i>	4	69	
18		70 Plan of <i>Cleifden House</i> in <i>Buckinghamshire</i>	1
19		71 { The North Front, <i>ditto</i>	2
20 Plan of <i>Covent-Garden</i>	1	72	
21 Front, <i>ditto</i>	2	73 { The South Front, <i>ditto</i>	2
22		74	
23 Plan of the <i>Royal Exchange</i>	1	75 Plan of <i>Hopeton House</i> in <i>Scotland</i>	1
24 { Front, <i>ditto</i>	2	76	
25		77 Front, <i>ditto</i>	2
26 Bow Steeple	1	78 Plan of <i>Lowther House</i> in <i>Westmorland</i>	1
27 A new Design for a Church of my Invention.	1	79 { Front, <i>ditto</i>	2
28		80	
29 <i>Tork Stairs</i>	1	81 { Plan and Front of <i>Braman Park</i> in <i>Yorkshire</i>	2
30 Plan of <i>Cobham Hall</i> in <i>Kent</i>	1	82	
31 Front, <i>ditto</i>	1	83 { A new Design inscrib'd to <i>Mr. Walpole</i>	2
32 Plan of <i>Chobsondely Hall</i> in <i>Cheshire</i>	1	84	
33 North Front, <i>ditto</i>	1	85 <i>Chevening House</i> in <i>Kent</i>	1
34 South Front, <i>ditto</i>	1	86 A new Design for <i>Mr. Secretary Stanhope</i>	1
35 West Front, <i>ditto</i>	1	87	
36 Plan of <i>Eaton Hall</i> in <i>Cheshire</i>	1	88 <i>Sir Charles Hotbam's House</i> at <i>Beverly</i>	1
37 Front, <i>ditto</i>	1	89 <i>Chester-lee-Street</i> in the Bishoprick of <i>Durham</i>	1
38 Plan of <i>Belton</i> in <i>Lincolnshire</i>	1	90 Plan of a new Design inscribed to <i>Mr. Secretary Merbuen</i>	1
39 Front, <i>ditto</i>	1	91	
40 Plan of <i>High Meadow</i> in <i>Glocestershire</i>	1	92 Front, <i>ditto</i>	1
41 Front, <i>ditto</i>	1	93 Front of <i>Dyrham House</i> in <i>Glocestershire</i>	1
42 Plan of a new Design for <i>Tobias Jenkins, Esq.</i>	1	94 <i>Newbold-hall</i> in <i>Warwickshire</i>	1
43		95 Plans of <i>Althrop</i> in <i>Northamptonshire</i>	1
44 Front, <i>ditto</i>	1	96 { Front, <i>ditto</i>	2
45 Plan of <i>Beddington Place</i> in <i>Surrey</i>	1	97	
46 West Front, <i>ditto</i>	1	98 Plan of a new Design for the Lord <i>Cadogan</i>	1
47 Garden Front, <i>ditto</i>	1	99 { Front, <i>ditto</i>	2
48 <i>Mr. Hudson's House</i> at <i>Sunbury</i>	1	100	
49 <i>Mr. Waller's House</i> at <i>Beaconsfield</i>	1		
50 Plan of <i>Mr. Roeb's House</i> at <i>Epsom</i>	1		
51 Front, <i>ditto</i>	1		
52 <i>Melvin House</i> in <i>Scotland</i>	1		
53 <i>Mr. Campbell's House</i> at <i>Glasgow</i>	1		
54 Plan of a new Design in <i>Somersetshire</i>	1		
	14   38		9   39
		Total of Fronts	77
		Total of Plans	23

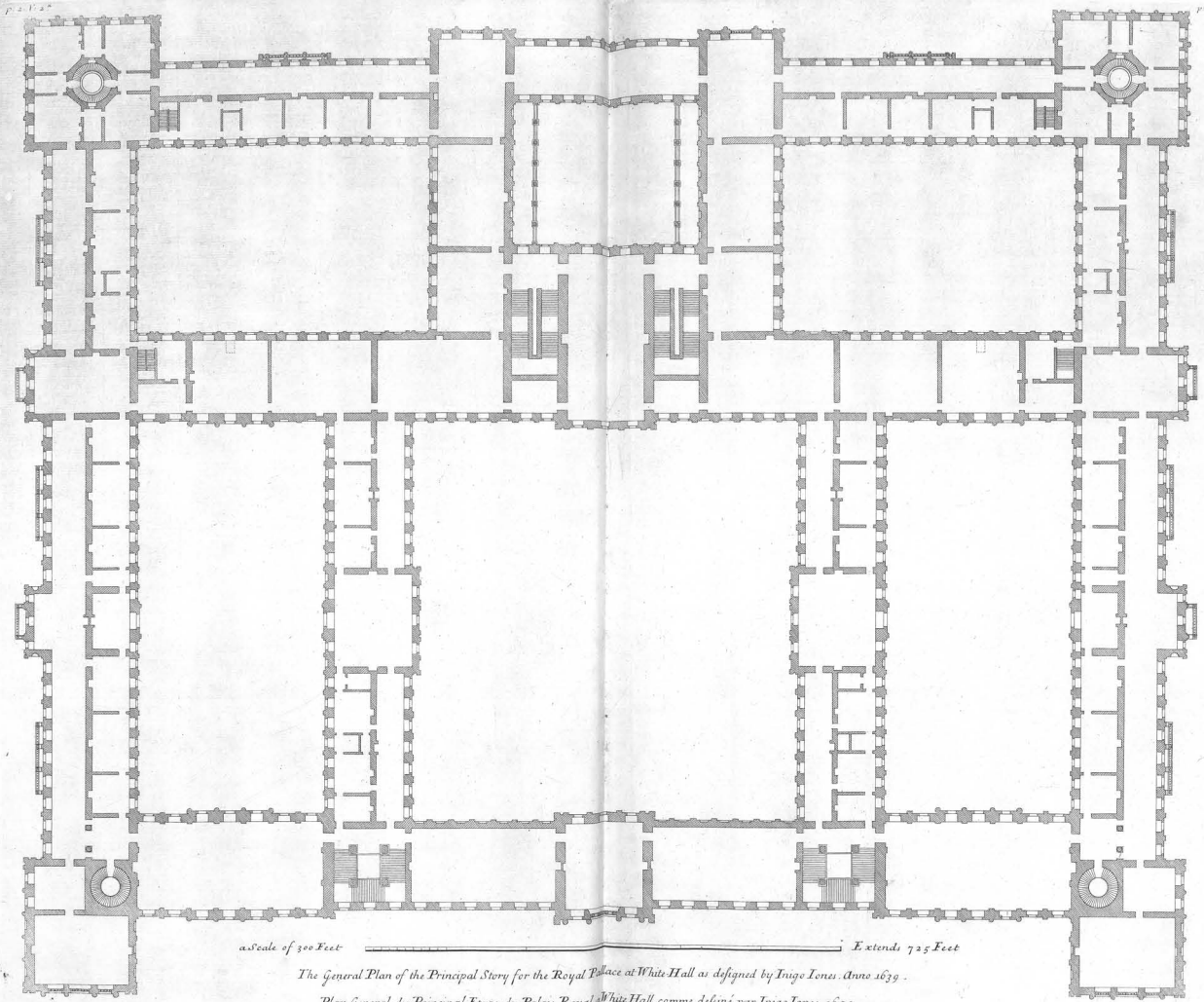
# A LIST of the SUBSCRIBERS.

A		Setts.	Setts.	Setts.	Setts.
DUKE of St. Albans, Captain of the Band of Pensioners, Duke of Angler, Lord Great Chamberlain	1	Mr. William Brown of Shofsbury	1	Sir David Dalrymple, Bar.	1
	2	Mr. Nicholas Blake, Carpenter	1	Sir Matthew Decker, Bar.	1
Duke of Argyll	2	Mr. Richard Brown	1	The Hon. George Dudding, Esq; one of the Lords of the Admiralty	1
The Marquis of Annandale	2	Mr. James Bateman	1	Montague Gerrard Drake, Esq;	1
Earl of Albemarle	2	Mr. James Blacker, Joiner	1	William Dugsworth, Esq;	1
The Lord Althorpe	2	Mr. Francis Bird, Statuary	1	William Dan of Livelyard, Esq;	1
Sir John Austubers, Bar.	1	William Lord Gouper, Lord High-Chancellor of Great Britain	2	Archibald Douglas of Cavers, Esq;	1
Sir Jacob Astley, Bar.	1	Earl of Carlisle	1	Thomas Doughty, D. D.	1
Sir Robert Adair, Knt.	1	Earl of Carnarvon	1	Mr. Deane, Merchant	1
Joseph Addison, Esq.	1	Earl of Cholmondeley, Treasurer of the Household	2	Capt. N. Danks	6
John Addison, M. D.	1	His Excellency the Lord Cadogan	1	Mr. Dadd of Lincoln-Inn	1
David Anderson, S. T. D.	1	Lord Cobham	1	Mr. William Dickinson	1
James Anderson, D. V. M.	1	Lord Cottle-Corner	1	Mrs. Dabon	1
Mr. Gabriel Appleby	1	Lord Craven	1	Mr. Peter Dwyer, Bookfeller	1
James Anderson, Gent. Waiter to the Signet in Edinburgh	1	Lord Colerane	1	Mr. John Darby, Printer	1
Sir H. Ashburn, Bart.	1	Lord Coningsby	1		
The Honourable John Astle, Esq; Treasurer to the Navy	2	Lord Conway	1	Right Hon. Lieut. General Earl	1
Jacob Astle, Esq; Surveyor of his Majesty's Navy	1	Lady Cairnes	1	Sir John Evelyn	1
John Ayscough, Esq;	1	The Lady Cary	1	Sir Gilbert Elliot of Minto, Bar. one of the Senators of the College of Justice	1
Thomas Archer, Esq;	1	Sir Thomas Clargis, Bar.	1	R. Edgewood, Esq; one of the Commissioners of the Treasury	1
Francis Aweley, Esq;	1	Sir Nicholas Carew, Bar.	1	His Excellency Baron D'Espe	1
Alexander Abernethy, Esq;	1	The Right Hon. Thomas Coke, Esq;	2	William Emmett, Esq;	1
Col. John Amory	1	Sir Archibald Campbell, Knt.	1	Mr. William Elliot	1
Mr. James Arneson	1	Sir Duncan Campbell, Bar.	1		
Mr. Francis Anderson	1	Sir Hugh Campbell of Calder, Bar.	1	EARL of Findlater and Seafield	1
		Sir James Campbell of Ardingroft, Bar.	1	Lord Fordy	1
		Sir James Campbell of Ardmole, Bar.	1	Lord Forster	1
		Sir James Campbell of Ardrachill, Bar.	1	Sir Thomas Franklin, Bar.	1
		The Honourable John Campbell, Esq;	1	Sir Robert Farneley, Bar.	1
		The Hon. Coll. James Campbell, Esq;	1	Sir Thomas Frankland, Bar.	1
		The Hon. Coll. James Campbell, Esq;	1	Richard Fuller, L.L. D.	1
		Gentlemen of the Bed-Chamber to his Royal Highness	1	Mr. Auditor Lilly	1
		Archibald Campbell, Esq;	1	Thomas Franklin, Esq;	1
		Daniel Campbell, Esq;	1	James Fary, Esq;	1
		Duncan Campbell, Esq;	1	John Forbes of Cullader, Esq;	1
		Capt. Matthew Campbell, Esq;	1	William Freeman, Esq;	1
		John Campbell, Esq; Lord Provost of Edinburgh	1	The Reverend Mr. Foster	1
		John Campbell of Calder, Esq;	1	Mr. Alexander Fors, Under Store-Keeper at Hampton-Court	1
		Colen Campbell, Esq;	1	Mr. Baron Fortesque	1
		Sir Richard Child, Bar.	3	Mr. Benjamin Fairfax	1
		Sir James Carmichael, Bar.	1		
		Sir James Cunningham, Bar.	1	DUKE of Grafton	1
		Sir Thomas Craik, Bar.	1	The Earl of Godolphin	1
		Sir Robert Child, Knt.	1	Lord Gifford	1
		Sir Alexander Cummins, Knt.	1	His Excellency the Lord Baron Geerts, &c.	1
		The Honourable George Clark, Esq;	1	Sir Richard Grosvenor, Bar.	1
		George Lockhart of Carnwath, Esq;	1	Sir Robert Gordon, Bar.	1
		R. Crawford, Esq;	1	Sir William Gordon, Bar.	1
		George Cuthbert, Esq;	1	Alexander Gordon of Pitmilly, Esq;	1
		Thomas Cary, Esq;	2	Alexander Grant, Esq; Brigadier General	1
		Henry Cuninghame, Esq;	1	Francis Guyon, Esq;	1
		Charles Coker, Esq;	1	William Le Grand, Esq;	1
		Courtesy Crocker, Esq;	1	Richard Gulp, Esq;	1
		The Honourable Charles Cecil, Esq;	1	Sir Samuel Gerrit, M. D.	1
		William Chetwynd, Esq;	1	Orlando Gre, Esq;	1
		Rt. Hon. Spencer Compton, Speaker of the House of Commons	1	Thomas Goge Esq;	1
		William Crompton, Esq;	1	Mr. Nathaniel Gushins	1
		Edmund Clarke, Esq; of the Inner Temple	1	Mr. Graham	1
		Colmley, Esq; of Vale Royal, Cheshire	1	William Grant, Esq; M. D.	1
		Arthur Croft of Croft Castle, in Herefordshire, Esq;	1	Mr. Tho. Granger of the East India House	1
		Mr. Cranenburg, late Resident for his Majesty	1	Mr. Andrew Gelpie	1
		Mr. Chetwynd	1		
		Mr. John Churchill, Master Carpenter to his Majesty	1	H.	
		John Corbett, L.L. D.	1	Duchess of Hamilton and Brandon	2
		Mr. Clements, Bookfeller in Oxford	1	Earl of Halifax	1
		Knightsley Chetwood, D. D. Dean of Gloucester	1	Earl of Hopeton	1
		Mr. Edward Cuyper	1	Lord Harley	1
		Mr. Joseph Carter of St. Albans	1	Lord Haverham	1
				Sir Thomas Hemmer, Bar.	1
		DUKE of Devonshire, Lord President of the Council	2	Sir Roger Hill, Bar.	1
		Duke of Douglas	1	Sir Tj. Hodges, Bar.	1
		Earl of Derby	1	Sir Charles Hotham, Bar.	1
		Earl of Dartmouth	1	Sir John Harpur, Bar. of Calk in Derbyshire	1
		Earl of Dorset	1	Sir David Hamilton, Knt.	1
		Earl of Denbigh	1	John Healy of Bristol, Esq;	1
		Earl of Dunstable	1	Richard Hill of Richmond, Esq;	1
		Lord Digby	1	William Herbert, Esq;	1
				William Hedworth, Esq;	1
				John Higgins, Esq;	1
				Nicholas Hunkins, Esq; Clerk of his Majesty's Works	1
				Roger Hadwin, Esq;	1
				Francis Haver, Esq;	1
				John Hallingdon, Esq;	1

Settl.		Settl.		Settl.		Settl.	
Mr. John Hare	1	Mr. Mahomet of St. James's	1	The Right Honourable Edward Southwell, Esq.	1		
Mr. Thomas Hinton	1	Mr. Mayhew	1	The Right Hon. James Stanhope, Esq.	1		
Mr. Robert Hynd	1	Mr. John Mordaunt	1	Principal Secretary of State	1		
Mr. Hatter	1	Mr. John Mordaunt	1	Sir James Stanger, his Majesty's Solicitor for North-Britain	1		
Mr. Robert Hulton	1	N.		Sir Edward Smith of Hill Hall, Esq.	1		
Mr. Housman	1	DUKE of Newcastle	2	Brigadier General Stearns	1		
Mr. John Harris	1	Earl of Nottingham	2	Doctor Szegeffels, Physician to his Majesty	1		
Mr. John Hulton	1	Earl of Northampton	2	His Excellence, Baron Shuck, Resident from his Czarian Majesty	1		
Michael Hutchingson, D. D.	1	Grey Neville, Esq.	1	William Strickland, Esq.	1		
Mr. John Hedges of Derbyshire	1	Edward Nicolas, Esq.	1	Mrs. Elizabeth Southwell, Esq.	1		
Mr. Henry Hore of Dering	1	LATE Duke of Ormond	2	Thomas Strangways, Esq.	1		
EARL of May, Lord Register and Justice General of North-Britain	2	Earl of Orford, first Lord of the Admiralty	2	James Sutter, Esq.	1		
Sir Theodore Jansin, Knt. and Bar.	1	Earl of Orkney	2	Hans Sloane, M. D.	1		
Sir Henry Jansin, Bar.	1	Earl of Oxford	2	Joseph Smith, D. D.	1		
Sir William Johnston, Bar.	1	The Honourable Thomas Onslow, Esq.	1	Mr. Edward Strong, Jun.	4		
The Right Hon. James Johnston, Esq.	1	Mr. Isaac Olley, Clerk of the City Works	1	Mr. John Stanger	1		
Tobias Jenkyns, Esq.	1	P.		Mr. Andrew Smith	1		
Thomas Jett, Esq.	1	DUKE of Devon	2	Mr. Thomas Saller	1		
Benjamin Jonsion, Esq. his Majesty's Master Mason	1	Duke of Portland	2	Mr. George Sampson	1		
Mr. Andrew Johnston	1	Earl Painter	2	Mr. Richard Sanders, Joyner	1		
Mr. William Jinks of Barton upon Trent	1	Earl of Pembroke	2	Mr. John Sturt, Engraver	1		
Mr. Andrew Jett	1	Lord Polwarth	1				
Mr. John Jones of Greenwich	1	Lord Perceval	1				
Mr. William Jones	1	Lord Chief Justice Parker	1				
Mr. Henry Jones of Woodstock	1	Sir Robert Pollock, Bar.	1				
Mr. Edward James	1	Sir Joseph Pringle	1				
Mr. William Jones, F. R. S.	1	Sir Walter Pringle	1				
DUKE of Kingston, Lord Privy Seal	2	Sir John Packington, Bar.	1				
Duke of Kent, Lord Chamberlain	2	His Excellence Major General Pepper	1				
Earl of Kinnaird	2	William Paley, Esq. Secretary of War	1				
Lord Viscount Kilguth	1	Robert Pringle, Esq. Under-Secretary	1				
Lord Chief Justice King	1	Blackwell Perkins, Esq.	1				
Robert Keck, Esq.	1	John Pringle of Haining, Esq.	1				
Mr. Thomas Kewstun	1	Vindale Price, Esq. of Exley in Herefordshire	1				
John King, D. D. Master of the Charter House	1	Silvester Pettit of Bernard's-Inn, Gent.	1				
L.		Mr. John Price, Jun.	8				
DUKE of Leeds	2	Mr. Francis Price	1				
Earl of London	2	Mr. Alexander Prichard, Mason	1				
Lord Langarville	1	Mr. Plummer	1				
Lord Langdon	1	Dr. Prat. Provost of Dublin	1				
Lord Langdale	1	Mr. John Prie of Richmond, Jun.	1				
Lord Bishop of London	1	Mr. James Page, Mason	1				
Nicholas Lechmere, Esq.	1	Captain Charles Pearce	1				
Samuel Lyons, Esq.	1	Mr. Andrew Peters, Painter	1				
Christopher Lighter, Esq.	1	Mr. Bart. Peisley of Oxon, Mason	1				
Benjamin Lacy, Esq.	1	Q.					
Colleton Leley	1	DUKE of Queensbury	2				
Mr. John Law of High-Whickham	1	R.					
Mr. Daniel Lock	1	DUKE of Richmond	2				
Mr. Lockman, St. James's	1	Duke of Roxburgh, principal Secretary of State	2				
Mr. John Leggs	1	Duke of Rutland	2				
Mr. William Law	1	Earl of Rochester	1				
M.		Earl of Rothes	1				
DUKE of Marlborough, Captain General of all His Majesty's Forces	2	Earl of Rothesbury	1				
Duchess of Marlborough	2	Right Honourable the Lord Romney	1				
Duke of Montague	2	Sir William Robinson, Bar.	1				
Duchess of Montague	2	Thomas Rowington, Esq.	1				
Duke of Montrose	2	Richard Ross, Esq.	1				
Earl of Marshall	2	Hugh Rose of Kilbrack, Esq.	1				
Earl of Mass	2	Benjamin Robinson, Esq.	1				
Lord Mansfield	1	Samuel Rowland, Esq.	1				
Lord Middleton	1	John Rude, Esq.	1				
Sir William Marshall, Bar.	2	Mr. John Roper	1				
Sir Christopher Maygrave, Bar.	1	S.					
Sir Nicholas Morice, Bar.	1	Duke of Somerset	2				
Sir Robert Maydon, Bar.	1	Duke of St. Albans	2				
The Right Hon. Paul Methuen, Esq. principal Secretary of State	1	Marquess of Suffolk	1				
John Montgomery, Esq.	1	Earl of Sunderland	1				
Hamphry Milnes, Esq.	1	Earl of Scarborough	2				
Edward Milnes, Esq.	1	Earl of Strathfield	2				
Thomas Milner, Esq.	1	Earl of Sutherland	2				
William Maynard, Esq. of Carryglis in Ireland	1	Earl of Stair	2				
William Monck, Esq. of Ireland	1	Lord Somers	2				
George Maddison, Esq.	1	Lord Skelborne	1				
Abraham Mearns, Esq.	1	Sir Fullwar Skipwith, Bar.	1				
Capt. Mandell	1	Sir William Stewart, Bar.	1				
Doctor Mide, M. D.	1	Sir John Smith, Bar.	1				
Doctor John Milbourne, M. D.	1	Sir Edward Symonds, Bar.	1				
Mr. John Mowbray	1	Sir Edward Simon, Bar.	1				
Mr. Arthur Mowbray	1	Sir Edmund Smith of Hill Hall in Essex, Bar.	1				
Mr. George Montgomery	1	Sir Thomas Seabright, Bar.	1				
Mr. Isaac Mars	1						
The Reverend John Maxwell	1						

N. B. The Author has made a great Progress in a Third Volume, containing the Geometrical Plans of the most considerable Gardens and Plantations, with large Perspectives of the most Regular Buildings, in a Method entirely new, and both instructing and pleasant.



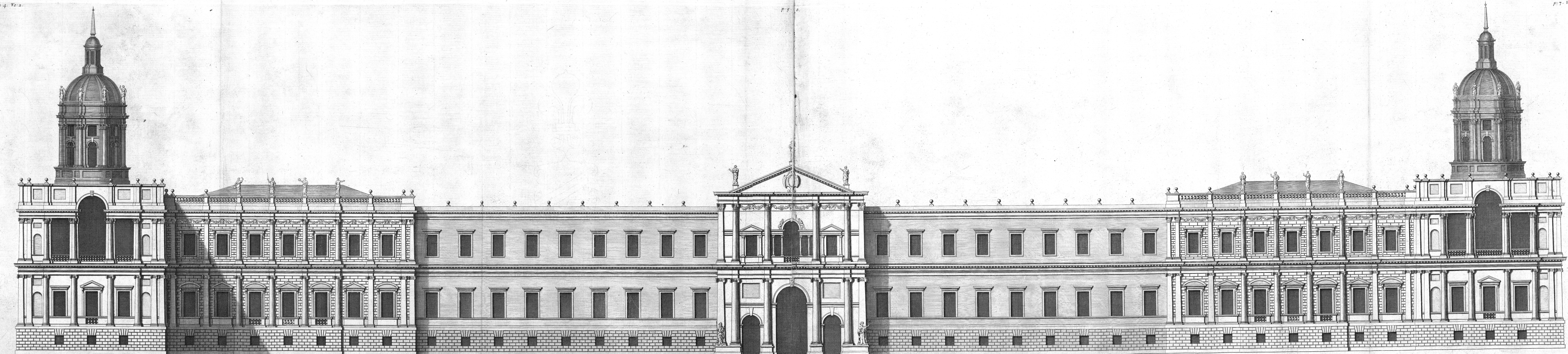


as a scale of 300 Feet  Extends 725 Feet

*The General Plan of the Principal Story for the Royal Palace at White Hall as designed by Inigo Jones. Anno 1639.*

*Plan General du Principal Etage du Palais Royal White Hall comme défini par Inigo Jones 1639.*



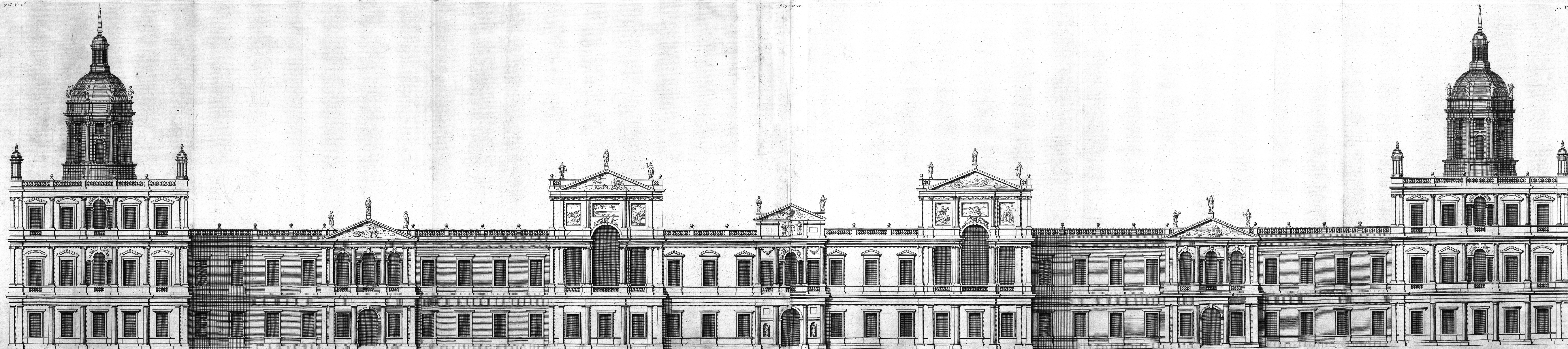


The Elevation of a Design for the Pallace at White Hall to wards the Park, as it was presented to his Majesty King Charles the I. by the famous Inigo Jones Anno 1639.  
Is most humbly Inscrib'd to his most Sacred Majesty King George.

a Scale of 200 Feet  
Extends 720 Feet

Elevation d'un Nouveau Dessein pour le Palais Royal a White Hall du coté du Parc, Inventé par le fameux Inigo Jones. premier Architecte du Roy Charles I. Anno 1639.  
Est tres humblement Dedié au Roy.  
H. Hulsbergh Sculp.





The Elevation of a Design for the Palace at White-Hall, towards the River, as it was presented to his Majesty King Charles I. by the celebrated Inigo Jones Anno 1639. but interrupted by the Civil Wars.

Ca: Campbell Delin:

It is most humbly Inscrib'd to his Royal Highness the Prince of Wales &c.

a Scale of 200 Feet.

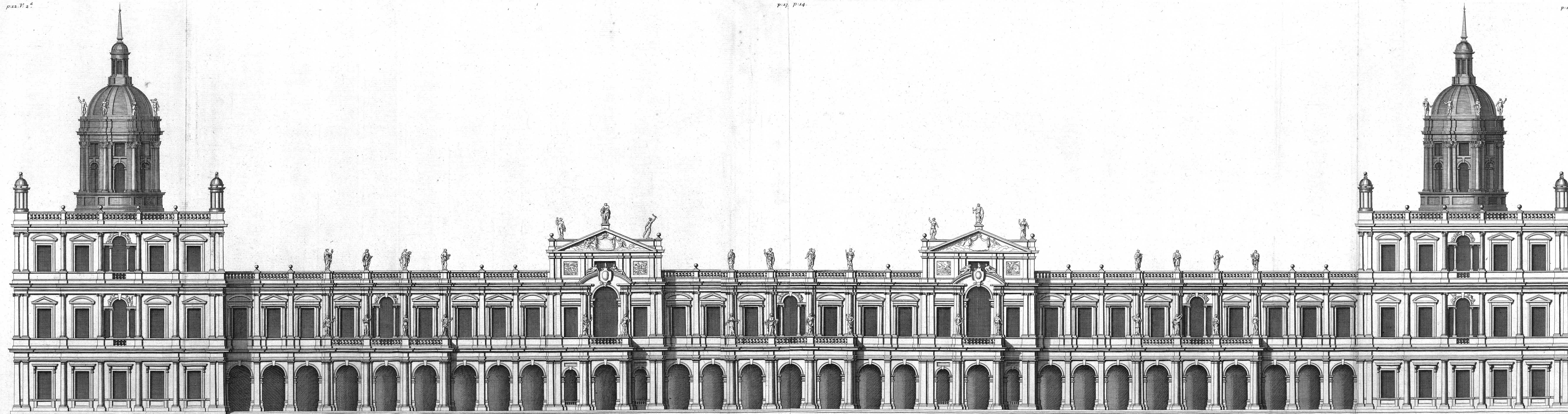
Extends 736 Feet.

Elevation d'un Nouveau Dessin pour le Palais Royal a White-Hall du côté de la Rivière, comme il a été présenté au Roy Charles I. par le celebre Inigo Jones, Anno 1639.

Est très humblement Dedié a Son Altesse Royale le Prince de Galles &c.

H. Hulstbergh Sculp:





The Elevation of a Design for the Pallace at White-Hall. towards Charing-Cross. as it was presented to his Majesty King C.I. by Inigo Jones Anno 1639.  
is most humbly Inscrīb'd to her Royal Highness the Princess of Wales &c.  
Ca. Campbell Delin:

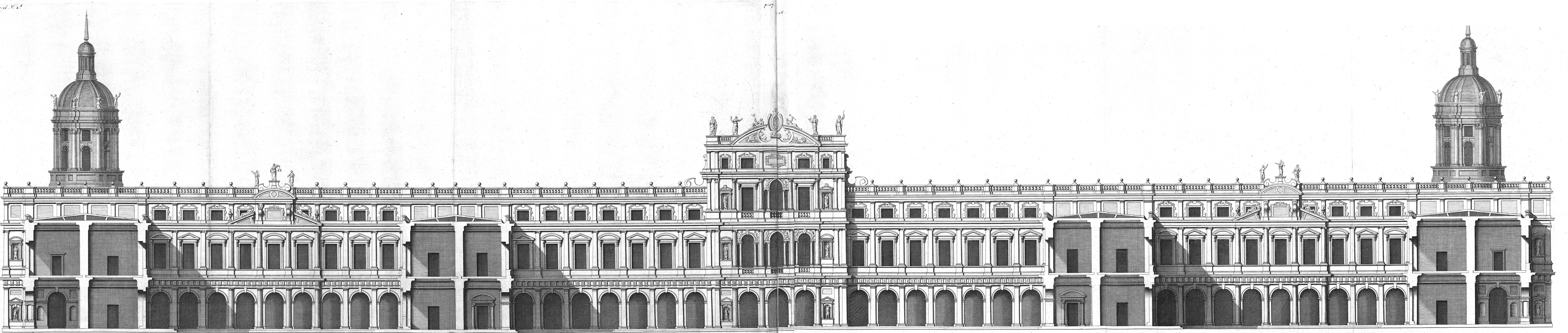
a Scale of 200 Feet.

Extends 620 Feet.

Elevation d'un nouveau Dessein pour le Palais Royal a White Hall. du coté Oriental, comme il a été présenté au Roy Charles I. par le celebre Inigo Jones  
Anno 1639. est tres humblement Dedié a Son Altesse Royale la Princess de Galles &c.

H. Hulsbergh. Sculp:





*The Section of the Royal Pallace at White Hall as designed by the renowned Inigo Jones 1639.*

*Is most humbly Inscrib'd to his Royal Highness Prince Frederick &c.*

*Ca: Campbell Delin.*

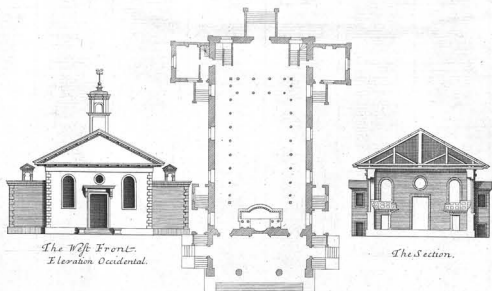
*a Scale of 200 Feet  
Extend 725 Feet*

*La Section du Palais Royal a White-Hall comme dessinée par le renommé Inigo Jones, premier Architecte du Roy Charles I. Anno 1639.*

*Dedie a son Altesse Royale le Prince Frederick &c.*

*H. Hulstbergh Sculp.*





*The West Front  
Elevation Occidental.*

*The Section.*

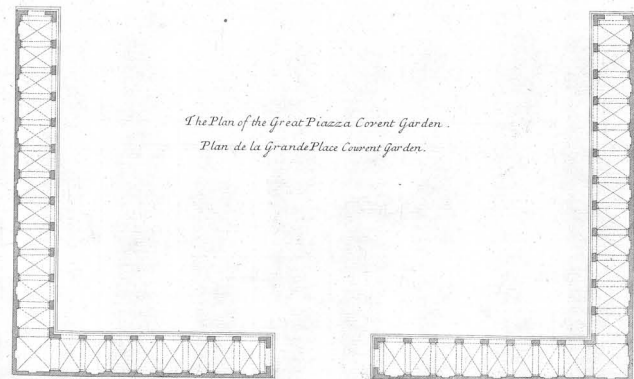
*Plan of S<sup>t</sup> Paul Church Covent Garden.  
Plan de l'Eglise du S<sup>t</sup> Paul Covent Garden.*

60 Feet.

Extends 333

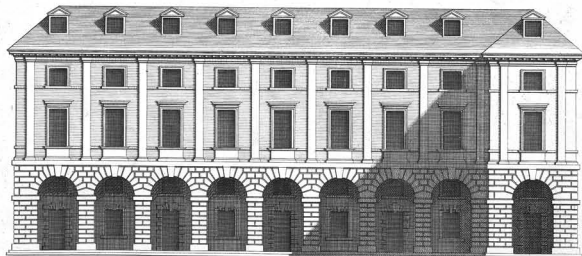
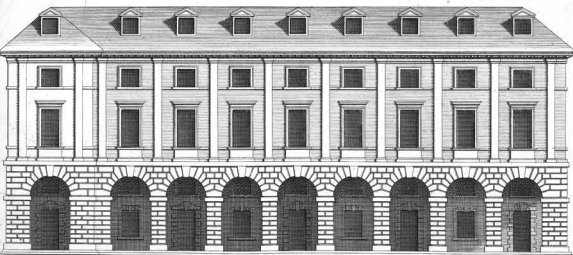


*The Plan of the Great Piazza Covent Garden.  
Plan de la Grande Place Covent Garden.*





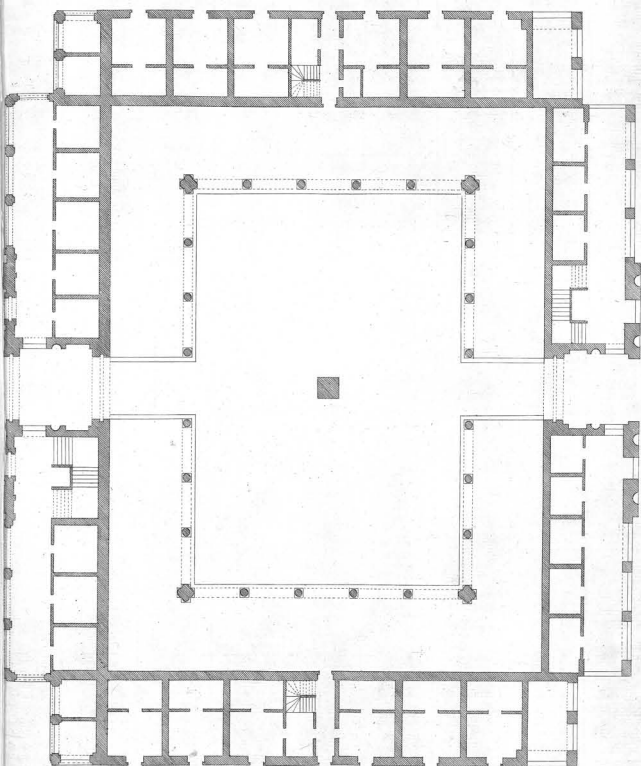
*The East prospect of St Paul Church Covent Garden to the Great Square.  
Elevation Orientale de l'Eglise du St Paul Covent Garden du côté de la grande Place.*



*a Scale of 100 Feet*

*The West prospect of Covent Garden. Invented by Inigo Jones 1640.  
Elevation Occidentale de la grande Place de Covent Garden.*

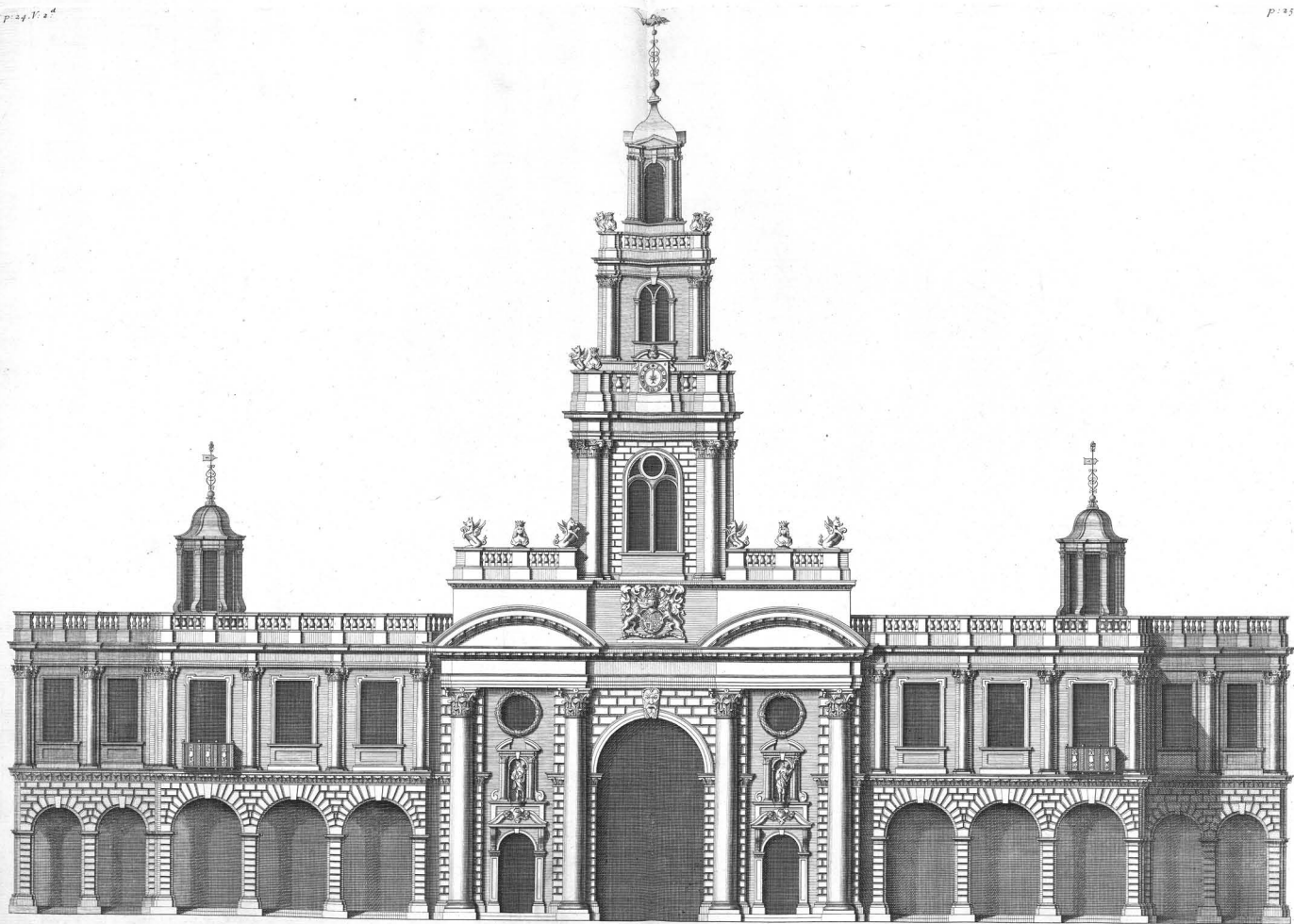
*This Plate is most humbly Inscrib'd to her grace the Duchess of Bedford R. &c.*



*Plan de la Bourse Royale a Londres.*

40 Feet  
Extended 205

*Plan of the Royal Exchange London.*



a Scale of 40 Feet

Extends 207

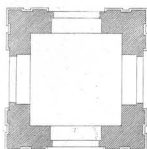
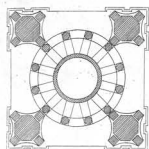
The Elevation of the Royal Exchange, Is most humbly Inscrib'd to the R<sup>t</sup> Hon<sup>ble</sup> S<sup>t</sup> James Bateman Bar<sup>t</sup> Lord Mayor of London &c:  
 Elevation de la Bourse Royale a Londres.

G. Campbell Delin.

H. Hulbergh Sc.

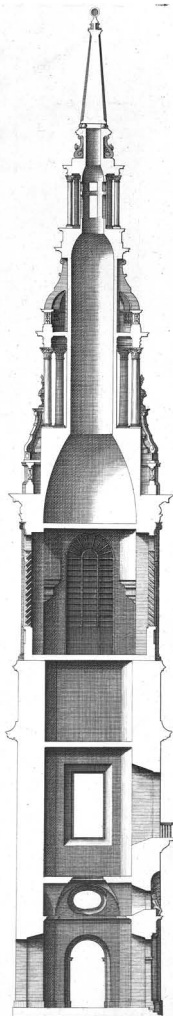
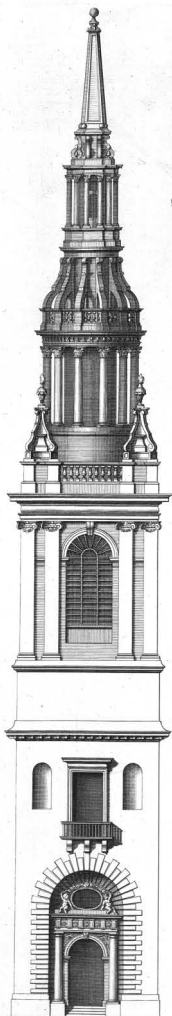
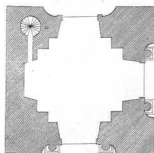


prob. 1712



A Scale of 40 Feet.

Extends 33.



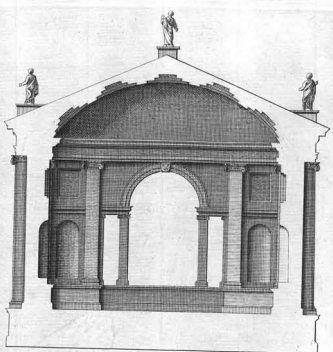
The Plans, Elevations and Section of Bow-Steepie in Cheapside.

J. Campbell Delin.

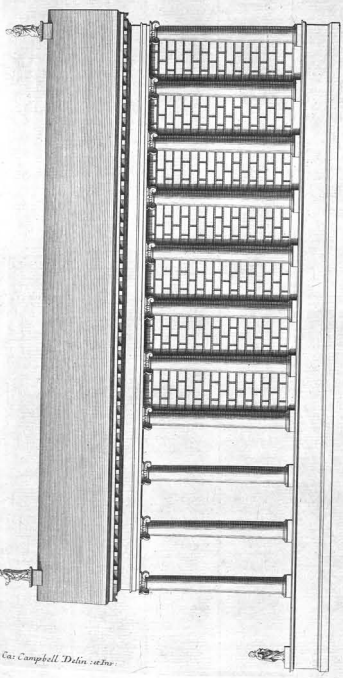
J. Hulbert Sc.



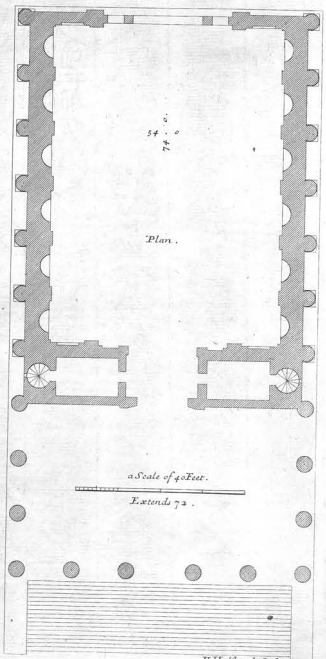
This New Design of my Invention for a Church in the Grecian Style is most humbly Inferred to  
his Grace William, Archbishop of Canterbury &c.  
Elevation d'un Nouveau Design de mon Invention pour une Eglise à la Greque.



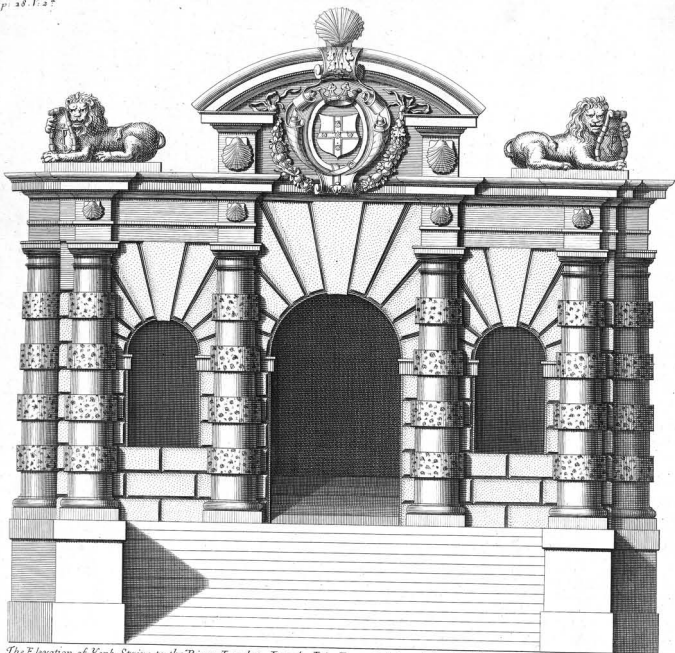
Section.



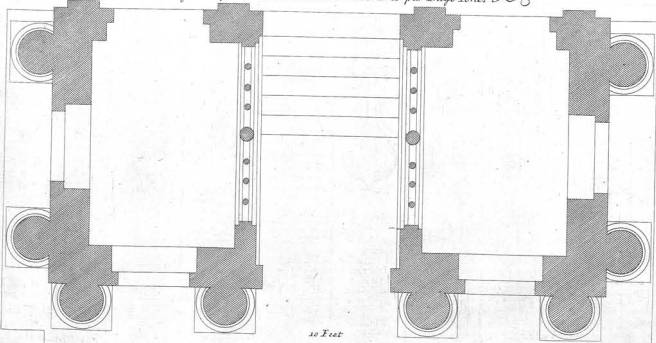
Co: Campbell Delin: ac: In:



B.H. Hulbergh Sculp.



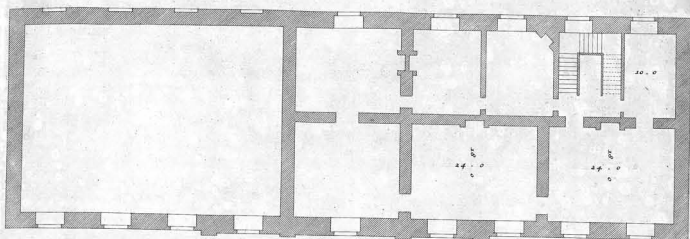
The Elevation of York Stairs to the River, London. Iny: by Inigo Jones 1625. is most humbly Inscrīb'd to S<sup>r</sup>. George Markham Bar<sup>t</sup>.  
Elevation d'un grand Escalier du Côté de la Rivière a Londres par Inigo Jones



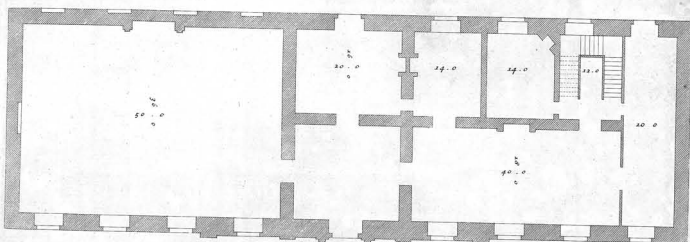
Ca. Campbell Delin.

10 Feet  
Extends 32

H. Hulstbergh Sculp.



*Plan of the Second Floor.  
Plan du Second Etage.*

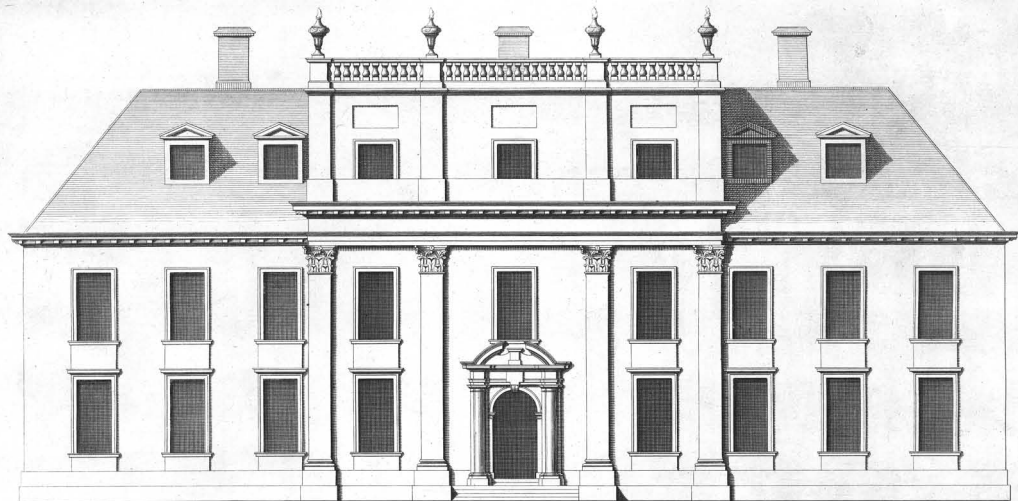


60 Feet



Extends 124

*Plan of the first Floor of Cobham Hall.  
Plan du Premier Etage de la Maison de Cobham.*



60 Feet

Extends 132

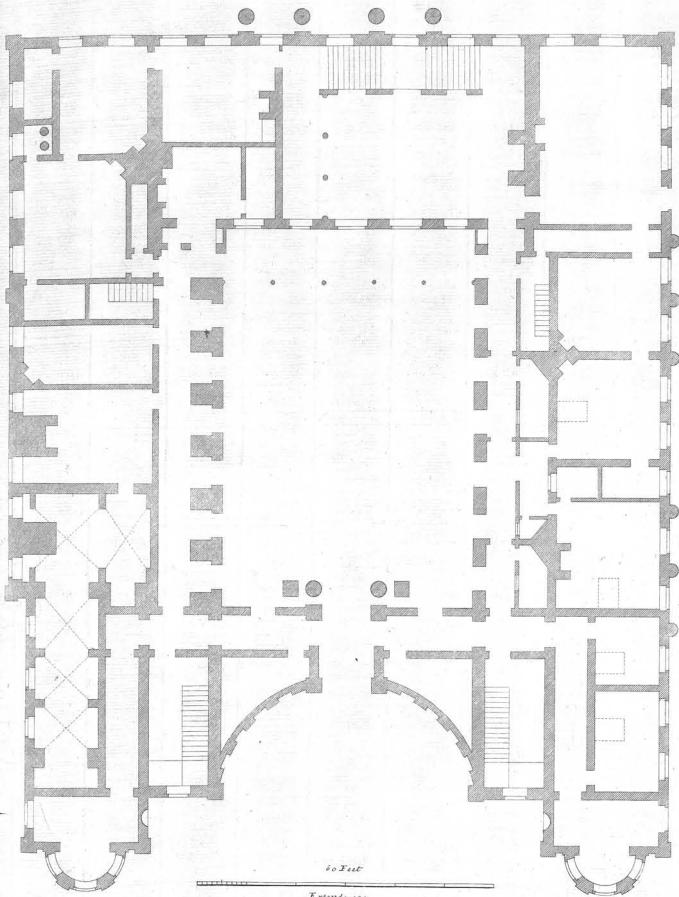
*The Elevation of Cobham Hall in Kent late the Seat of the Dukes of Lennox and Richmond now of the R.<sup>th</sup> Hon.<sup>ble</sup> Lady Theodosia Blyth. and John Blyth Esq<sup>r</sup> her Husband.  
to whom this Plate is most humbly Inscrib'd.*

*Elevation de la Maison de Cobham dans la Comté de Kent.*

*Juige Lentez Insc:*

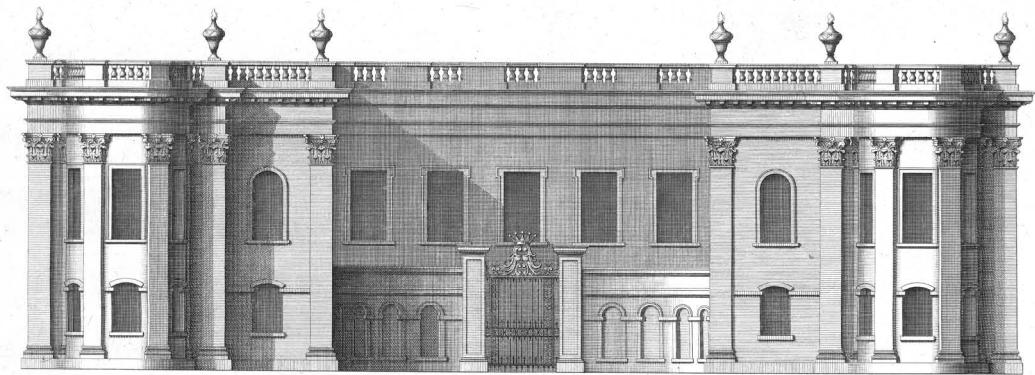
*Ga. Campbell Delin:*

*H. Mullerburgh Sculp:*



*Plan of Cholmondeley Hall.*

*Plan de la Maison de Cholmondeley*



*a Scale of 60 Feet*



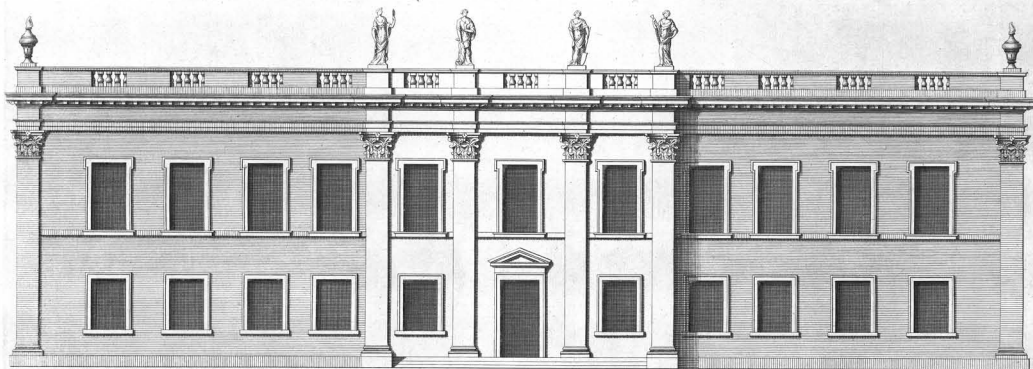
*Extends 131*

*The North Prospect of Cholmondeley Hall in Cheshire. The Seat of the R.<sup>t</sup> Hon.<sup>ble</sup> The Earl of Cholmondeley Treasurer of his Majesty's Household.  
to whom this Plate is most humbly Inscrib'd.*

*Elevation Septentrionale de la Maison de Cholmondeley dans la Comté de Cheshire.*

*Ce. Campbell Delin.*

*H. Hulstberg Sculp.*



60 Feet

Extends 135

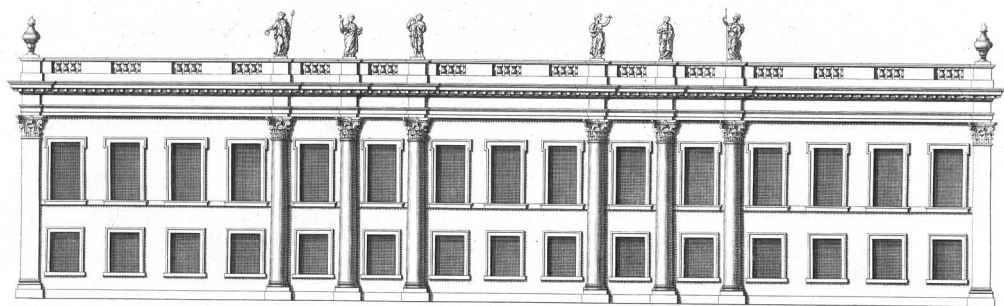
*The South Prospect of Cholmondeley Hall in Cheshire. The Seat of the R.<sup>h</sup> Hon.<sup>ble</sup> The Earl of Cholmondeley Treasurer of his Majesty's Household.  
to whom this Plate is most humbly Inferib'd.*

*Elevation Méridionale de la Maison de Cholmondeley dans le Comté de Cheshire.*

*C. Campbell Delin.*

*H. Hulburgh Sculp.*





a Scale of 60 Feet.



Extends 166.

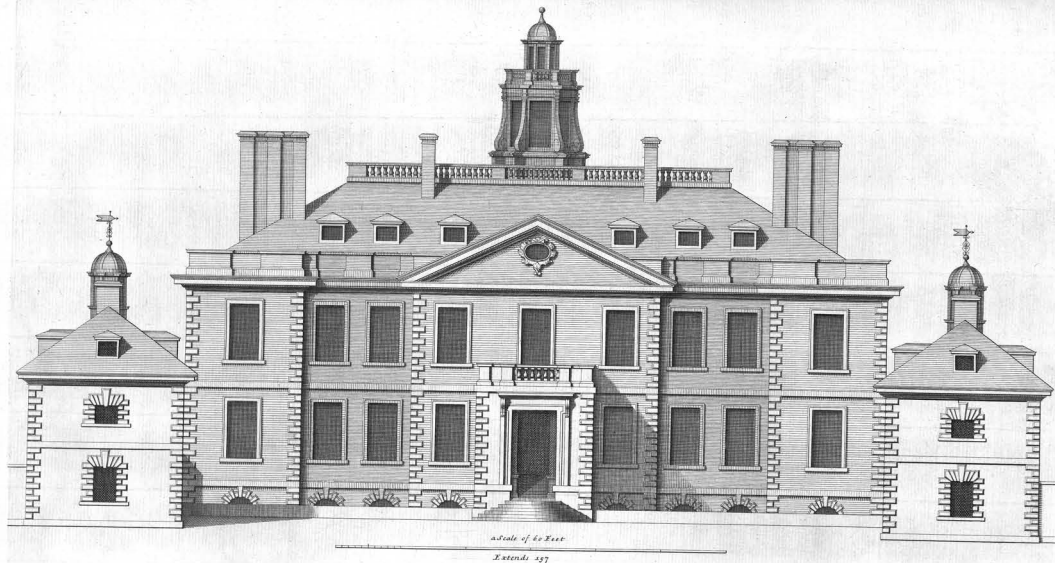
*The West Prospect of Cholmondeley Hall in Cheshire The Seat of the R<sup>t</sup> Hon<sup>ble</sup> The Earl of Cholmondeley Treasurer of his Majesty's Household.  
to whom this Plate is most humbly Inscrib'd.*

*Elevation Occidentale de la Maison de Cholmondeley dans le Comté de Cheshire.*

*C. Campbell Delin:*

*H. Hulstbergh Sculp:*

*General Plan of Eaton Hall .*  
*Plan General de la Maison D'Eaton .*

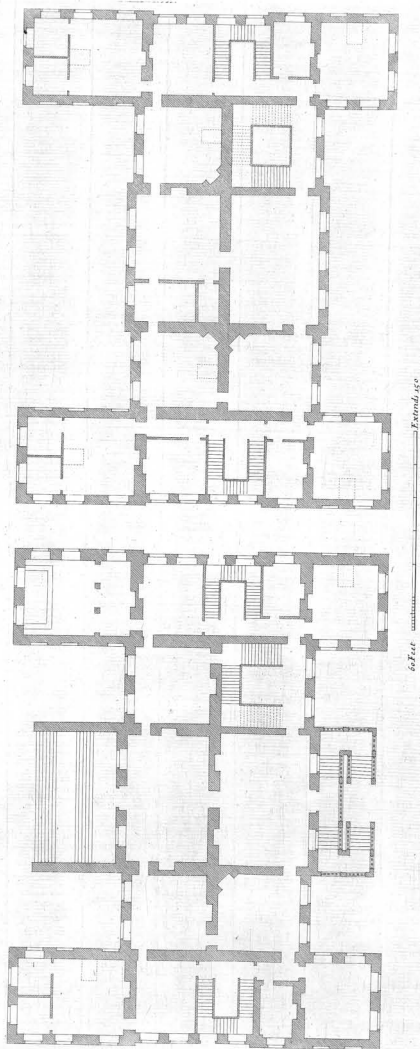


*The Elevation of Eaton Hall in Cheshire. The Seat of St. Richard Grosvenor Bart.  
to whom this Plate is most humbly Inscrib'd.*

*Elevation de la Maison D'Eaton.*

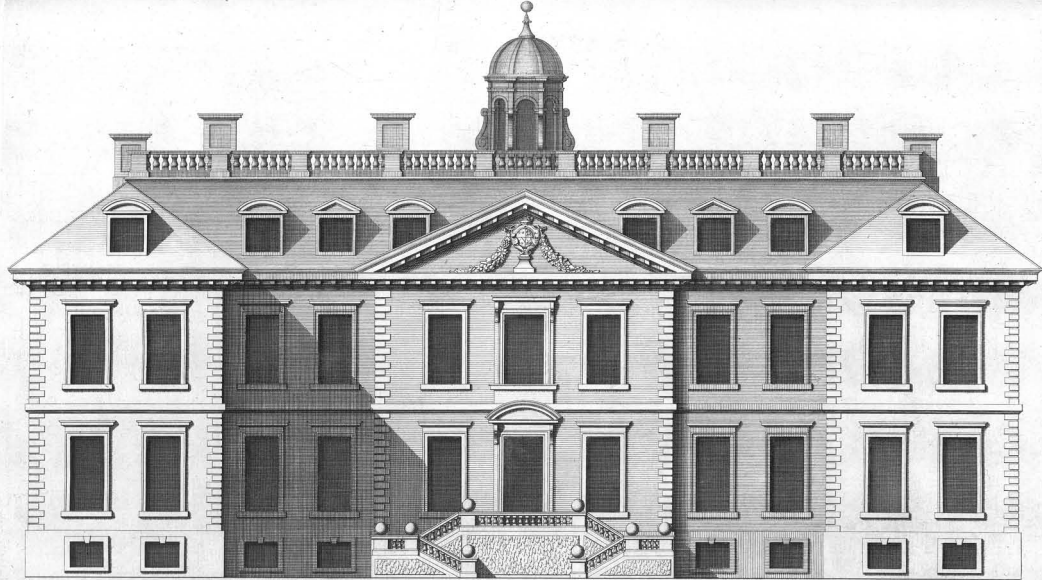
*Ca. Campbell Delin:*

*H. Hulstberg Sculp.*



*Plan of the 2<sup>d</sup> Story.*  
*Plan du Second Etage.*

*Plan of the 4<sup>th</sup> Story of Belton.*  
*Plan du Premier Etage de Belton.*



60 Feet

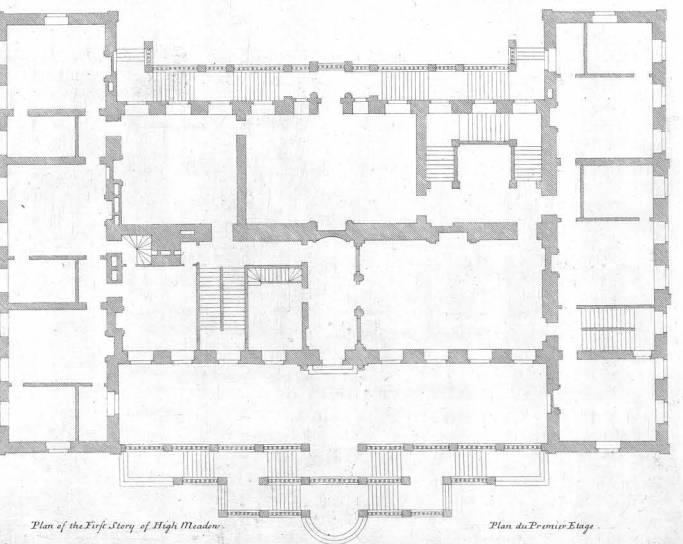
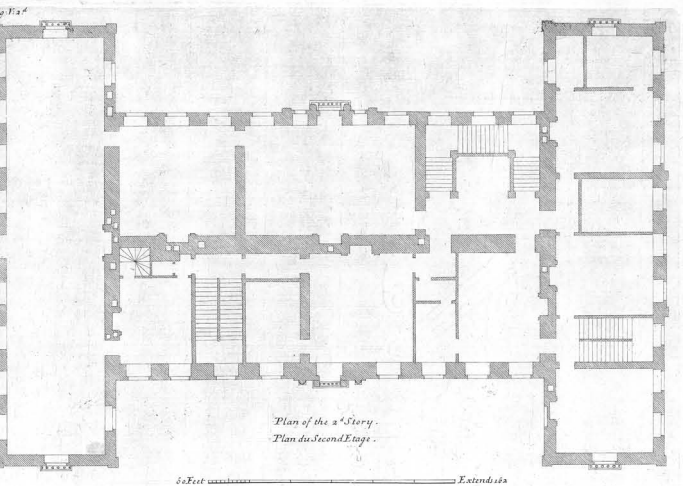
Extends 150

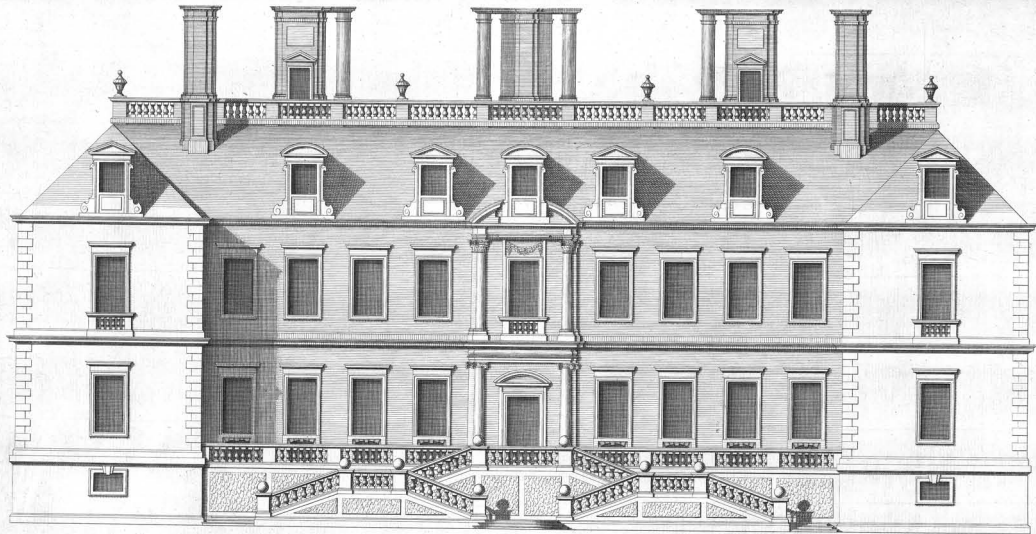
*The Elevation of Belton in Lincolnshire the Seat of S<sup>r</sup> John Brownlow Bart.  
to whom this Plate is most humbly Inscrib'd.*

*Elevation de la Maison de Belton dans la Comté de Lincoln.*

*C<sup>a</sup> Campbell Delin:*

*H. Hulsburgh Sculp.*





60 Feet ————— Extends 164

*The Elevation of High Meadow in Gloucestershire the Seat of Thomas Gage Esq.  
To whom this Plate is most humbly Inscrib'd.*

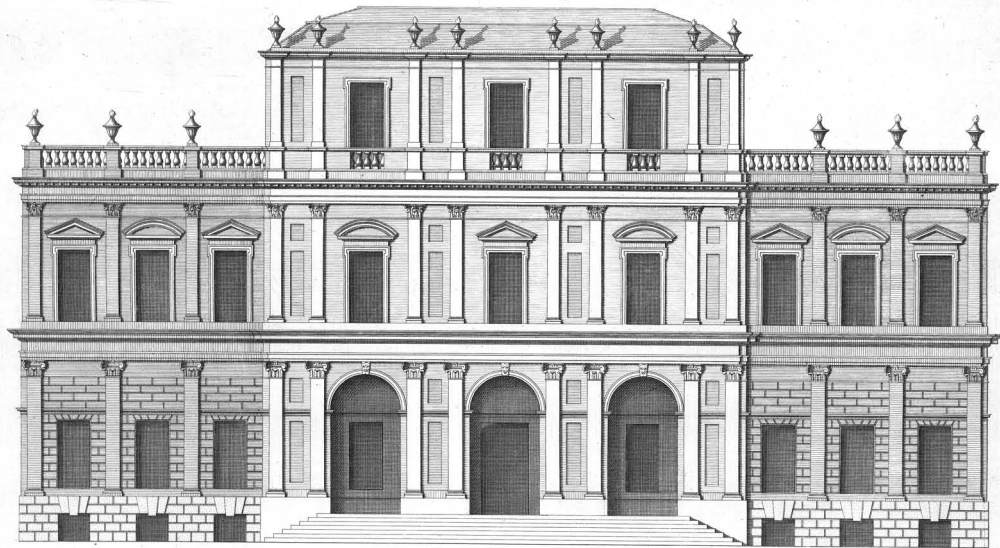
*Elevation de la Maison du Monsieur Gage dans la Comté de Gloucester.*

*Jas. Campbell Delin.*

*H. Huldergh Sculp.*







60 Feet

Extends 120

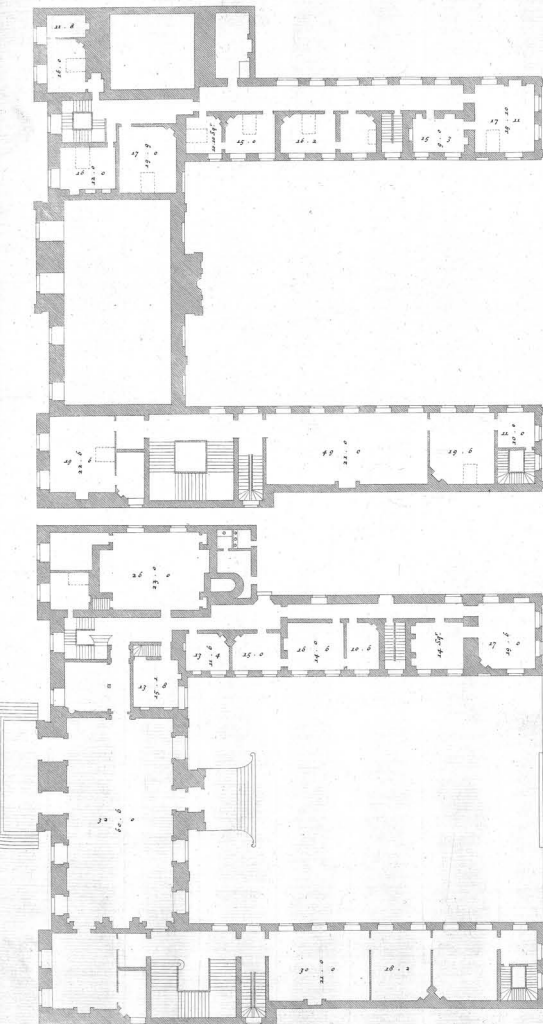
*This New Design of my Invention in the Theatrical Stile .*

*Is most humbly Inferred to Tobias Tenkyns Esq<sup>r</sup>.*

*Elevation d'un Nouveau Dessein de mon Invention, a la maniere Theatrale.*

*C. Campbell Inscr. Del.*

*J. H. Hulbergh Sc.*



*Plan of the Second Story.*

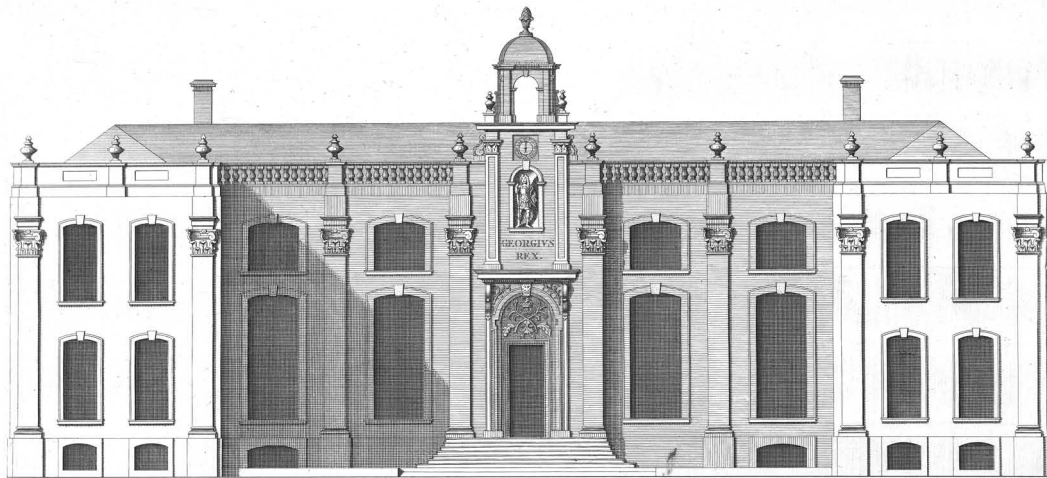
*Plan du Second Etage.*

100 Feet.

Extends 148.

*Plan of the First Story of Boddington Place.*

*Plan du Premier Etage.*



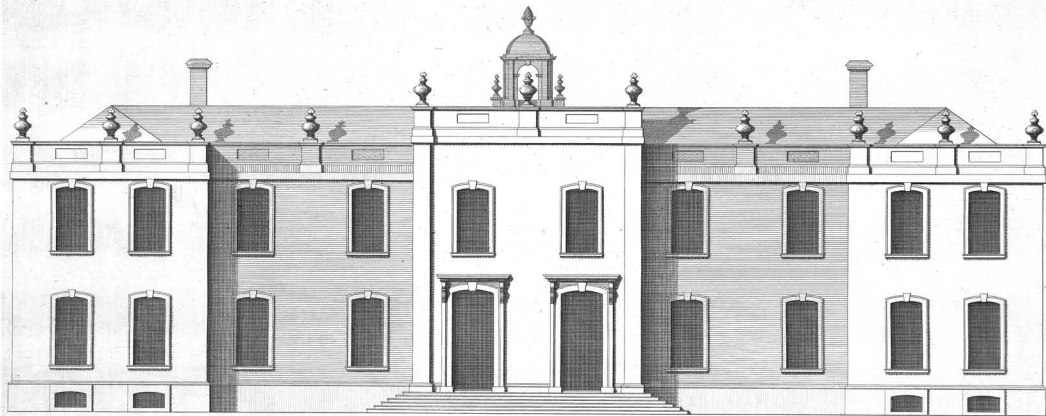
60 Feet ————— Extends 125

*The West prospect of Beddington Place in Surrey, the Seat of S<sup>t</sup> Nicholas Carew B<sup>t</sup>  
to whom this Plate is most humbly Inferib'd.*

*Elevation Occidentale de la Maison de Beddington dans la Comté de Surrey.*

*G. Campbell Delin:*

*H. Hulstberg Sculp:*



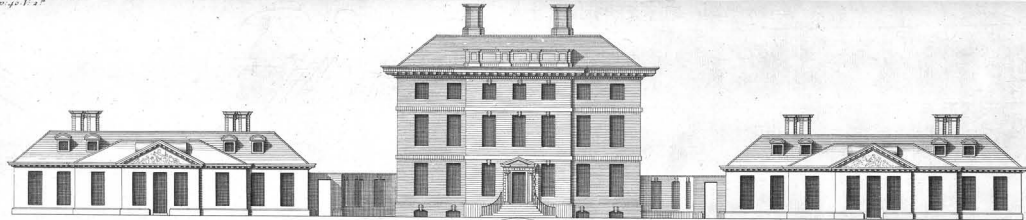
60 Feet ————— Extends 148

*The East Prospect to the Gardens of Beddington Place in Surrey.  
is most humbly Inscrib'd to The Lady Carew.*

*Elevation Orientale de la Maison de Beddington dans la Comté de Surrey.*

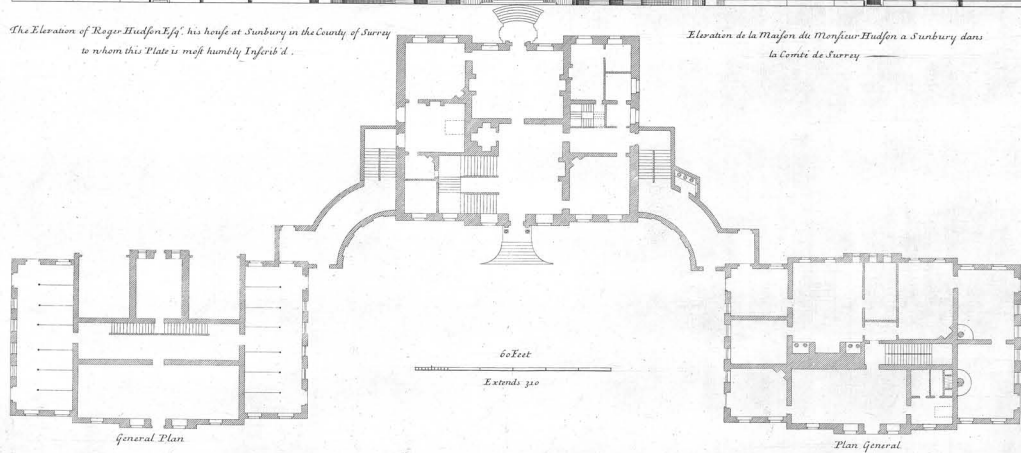
*Ce. Campbell Delin.*

*H. Hulsbergh Sculp.*



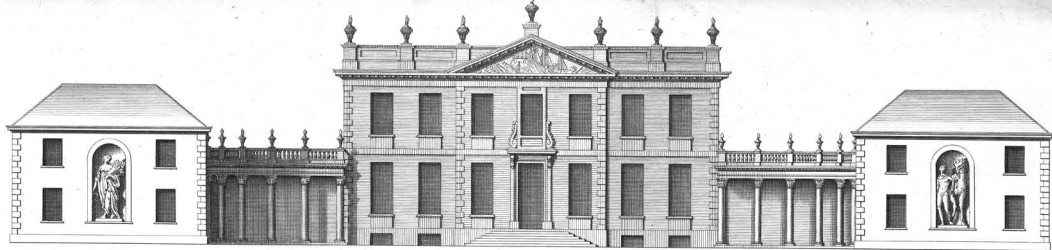
*The Elevation of Roger Hudson Esq's, his house at Sunbury in the County of Surrey  
to whom this Plate is most humbly Inscrib'd.*

*Elevation de la Maison du Monsieur Hudson a Sunbury dans  
la Comté de Surrey*



*C. Campbell Delin.*

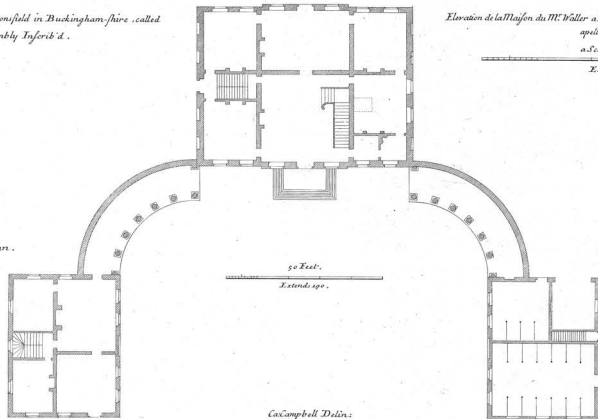
*H. Hulstbergh Sculp.*



*The Elevation of John Waller Esq's his House in Beaconsfield in Buckinghamshire, called  
Gregorius, to whom this Plate is most humbly Inscrib'd.*

*Elevation de la Maison du M<sup>r</sup> Waller a Beaconsfield dans la Comté de Buckingham.  
apellé Gregorius.  
a Scale of 50 Feet.  
Extends 150.*

*The General Plan.*

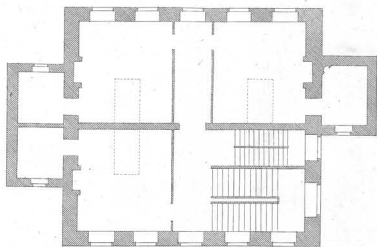


*Plan General.*

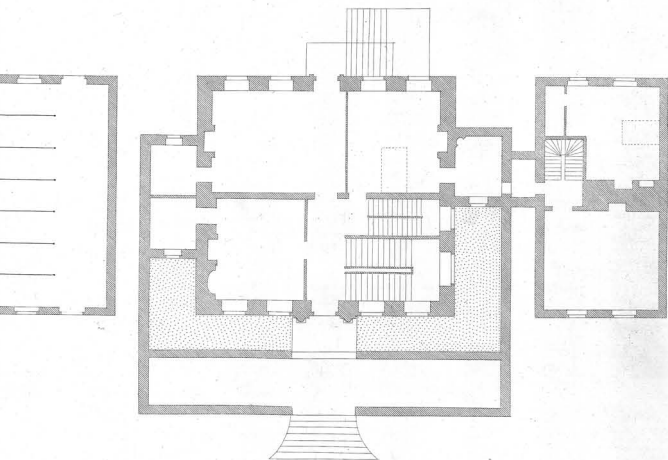
*Thom: Milner Esq: Inscr:*

*Campbell Delin:*

*H. Hulberrgh Sculp:*

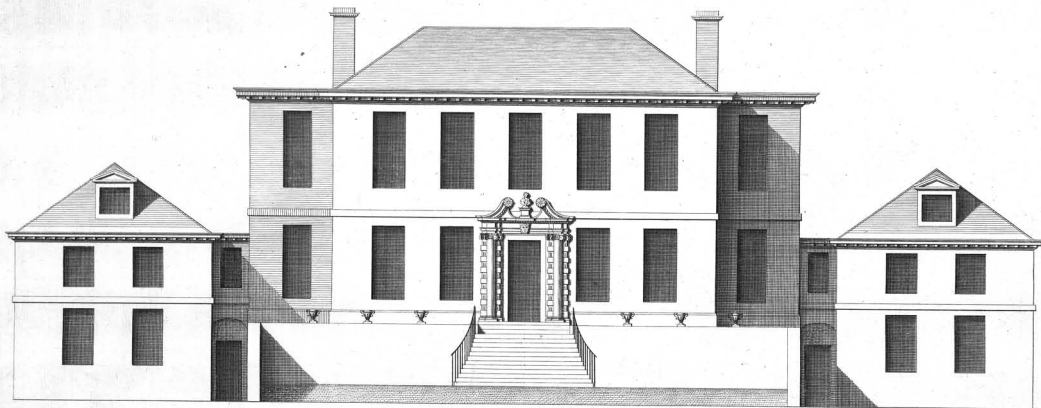


*Plan of the Chamber Floor.*  
*Plan du Second Etage.*



40 Feet  Extends 114

*General Plan of Mr. Roeth's house at Epsom.*  
*Plan général de la Maison du Monsieur Roeth.*



40 Feet  Extends 114

*The Elevation of Richard Rooth Esq's House at Epsom in Surrey .*

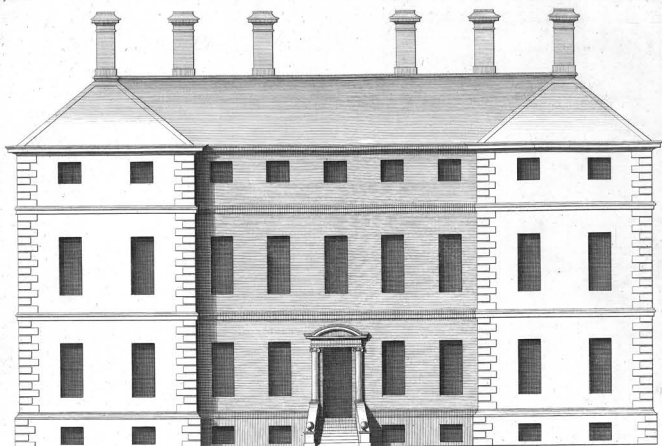
*to whom this Plate is most humbly Inscrib'd .*

*Elevation de la Maison du Monsieur Rooth a Epsom dans la Comté de Surrey .*

*C. Campbell Delin :*

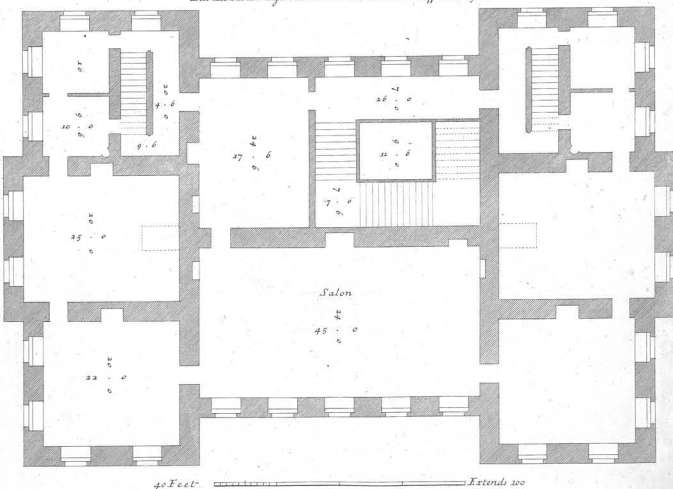
*H. Hulstvergh Sculp :*





*The Elevation of Melvin house in the Shire of Fyfe in Scotland the Seat of the R<sup>t</sup> Hon<sup>ble</sup> the Earl of Leven —  
to whom this Plate is most humbly Inscrib'd.*

*Elevation de la Maison de Melvin dans la Comté de Fyfe en Ecosse.*



40 Feet

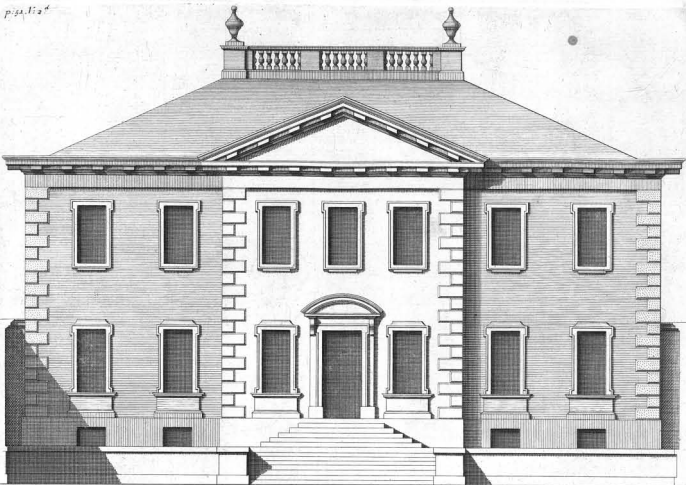
Extends 100

*Plan of the principal Floor.*

*Plan du principal Etage.*

*C. Campbell Delin.*

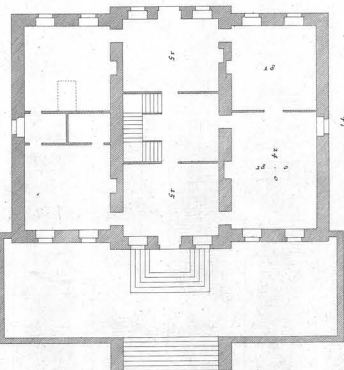
*H. Huldborg Sc.*



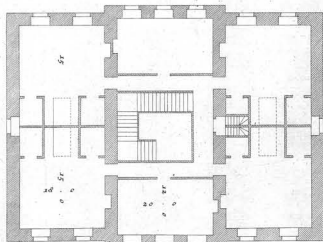
40 Feet  Extends 66

*The Elevation of Daniel Campbell of Shanfield Esq<sup>r</sup> his house in the City of Glasgow in Scotland,  
to whom this Plate is most humbly Inscrib'd.*


*Elevation de la Maison du M<sup>r</sup> Campbell Sieur de Shanfield a Glasgow en Ecosse.*

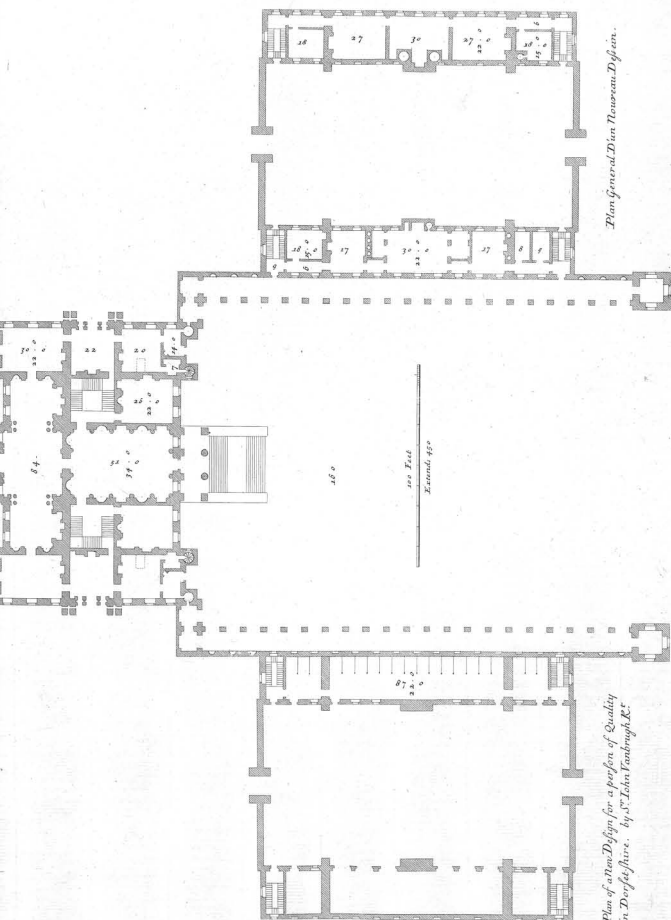


*Plan of the Principal Floor.  
Plan du Principal Etage.*



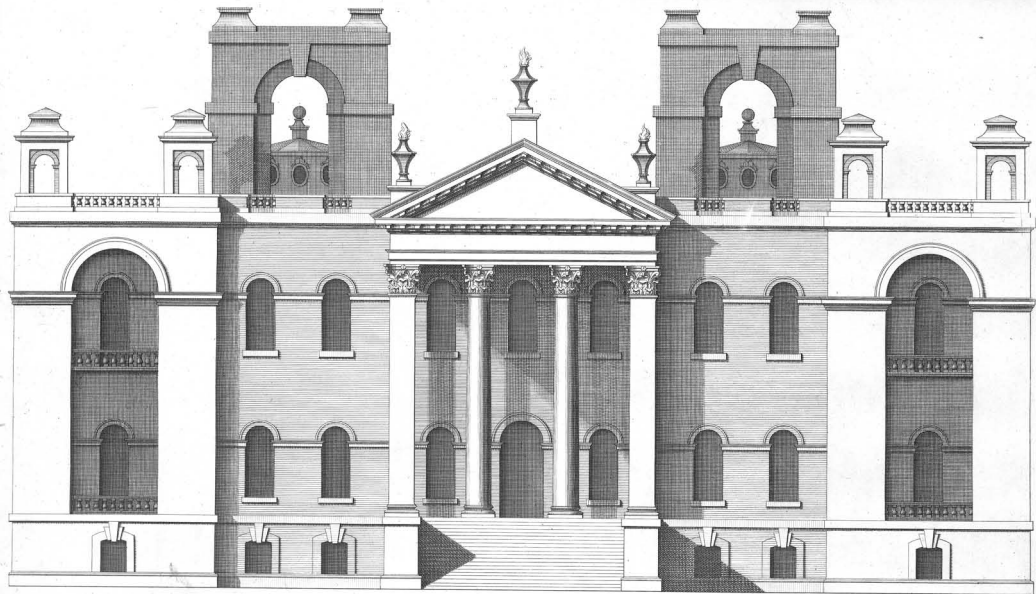
*Plan of the Chamber Floor.  
Plan du Second Etage.*

40 Feet  Extends 66



*Plan General d'un Nouveau D'ssein.*

*General Plan of a New Design for a prison of Quality  
in Dorsetshire. by J. Vanbrugh Esq.*

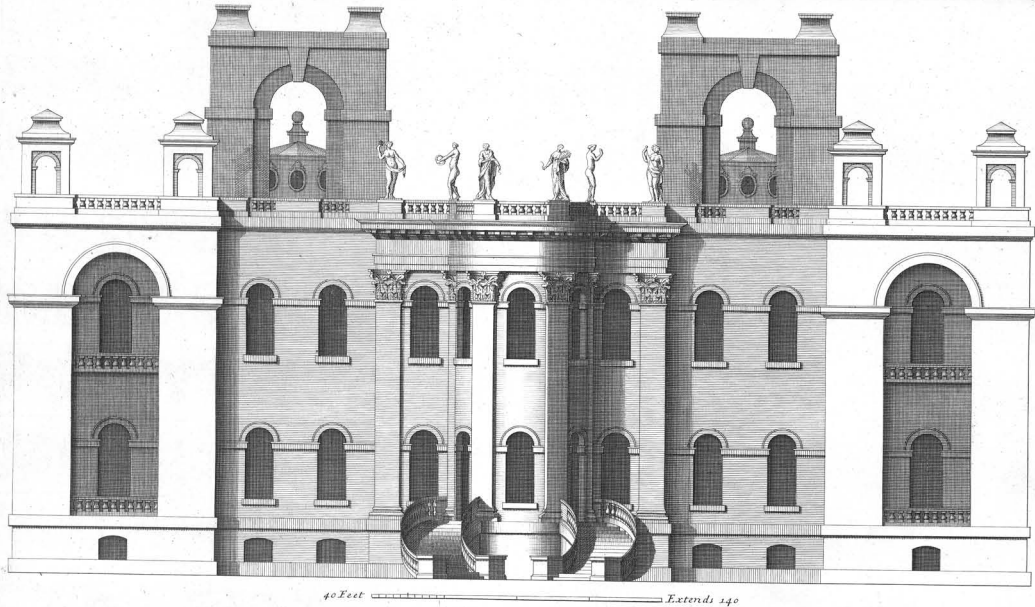


40 Feet  Extends 140

*The Elevation of a New Design for a person of Quality in Dorset-shire as Designed by S<sup>r</sup> John Vanbrugh R<sup>e</sup>.  
Elevation D'un Nouveau Dessein.*

*Ca: Campbell Delin:*

*H. Hulsbergh Sc:*

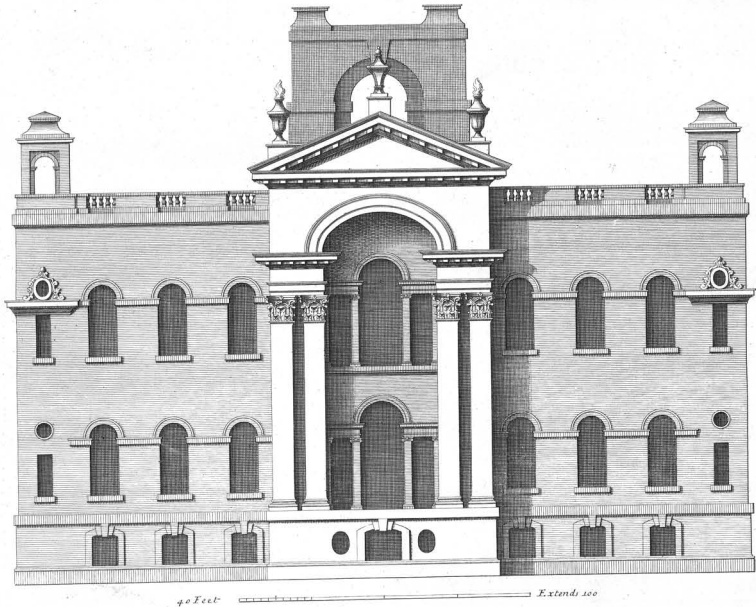


*The Garden Front of a New Design for a person of Quality in Dorset-shire, as Designed by S<sup>r</sup> John Vanbrugh R<sup>s</sup>*

*Elevation D'un Nouveau Dessein du Côté des Jardins.*

*Cas. Campbell Delin.*

*H. Hulstbergh Sc.*

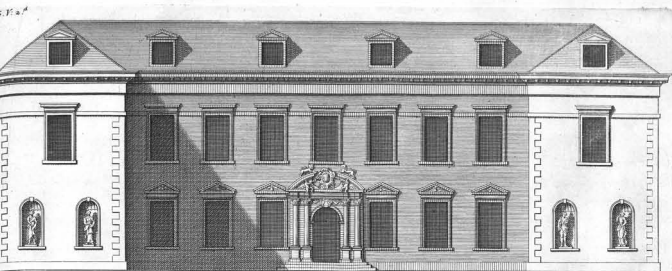


40 Feet ————— Extends 100

*The Elevation of One End of a New Design for a person of Quality in Dorsetshire, as Designed by S<sup>r</sup> John Vanbrugh R<sup>t</sup>*

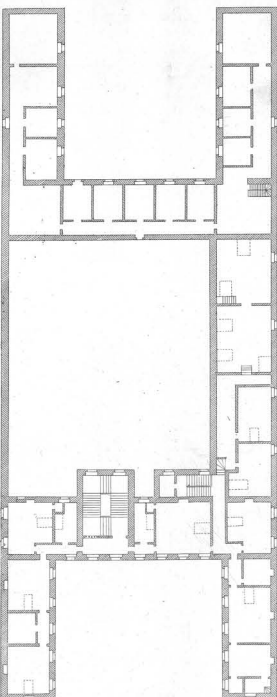
*Ca: Campbell Delin:*

*H. Hulstbergh Sc:*



60 Feet Extends 219

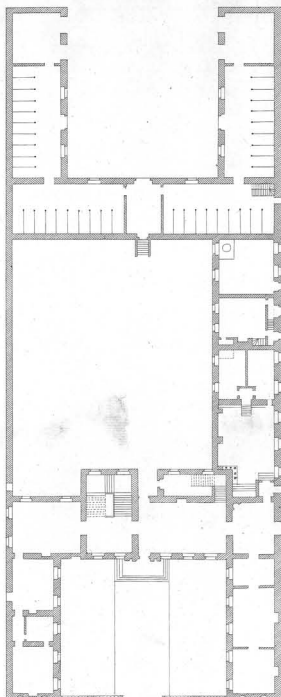
*The Elevation of Maiden Bradley in Wiltshire, the Seat of S<sup>t</sup>. Edward Seymour Bar<sup>t</sup> to whom this Plate is most humbly Inscrib<sup>d</sup>.  
Elevation de la Maison de Maiden Bradley, dans la Comté de Wilts.*



*Plan of the Second Story.  
Plan du Second Etage.*

*Campbell Delin:*

*a Scale of 90 Feet.*

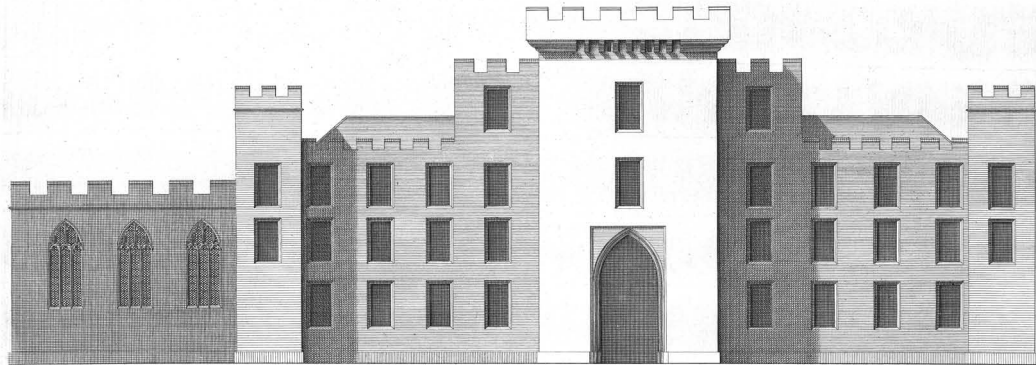


*Plan of the first Story.  
Plan du premier Etage*

*H. Huldbørgh Sculp:*







a Scale of 80 Feet

House Extends 140

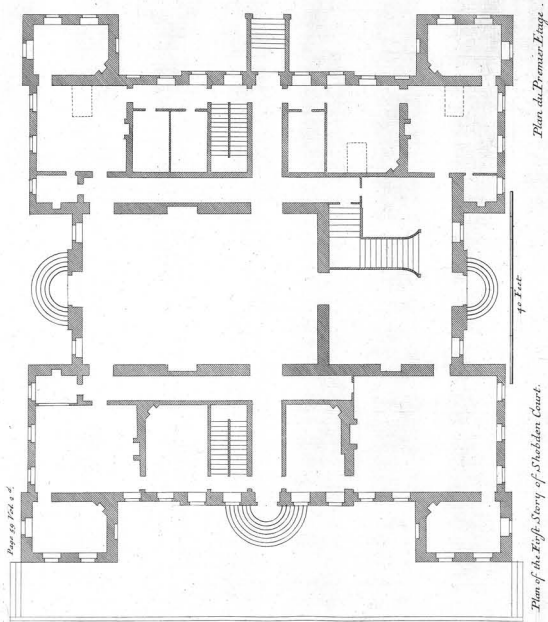
*Hampton Court in Herefordshire, built by Henry the 4<sup>th</sup> King of England when he was Duke of Hereford, the Seat of the Right Hon<sup>ble</sup> the Lord Coningsby.*

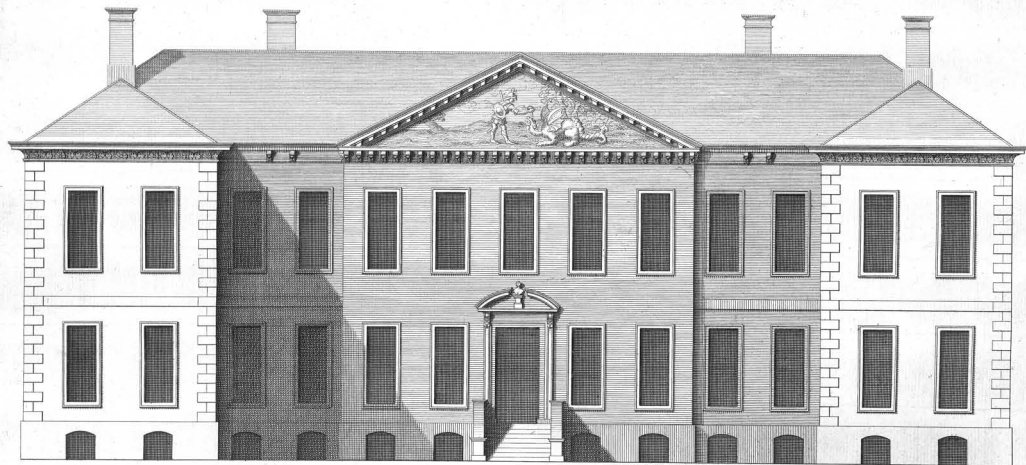
*to whom this Plate is most humbly Inscrib'd.*

*Elevation D'Hampton Cour dans la Comté D'Hereford.*

*Cc: Campbell Delin:*

*H. Hulbergh Sculp*





a Scale of 40 Feet

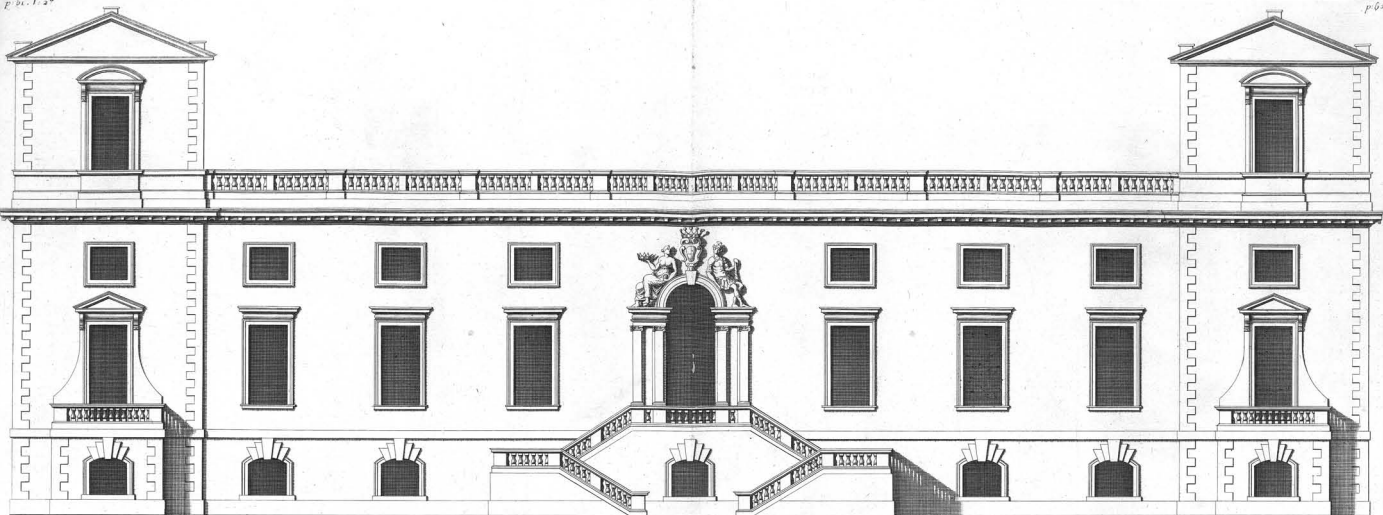
Extends 107

*Shobden Court in Herifordshire, the Seat of the R<sup>t</sup> Hon<sup>ble</sup> S<sup>r</sup> James Bateman Bar<sup>t</sup> Lord Mayor of London &c: to whom this Plate is most humbly Inscrib'd.*

*Elevation de Shobden Cour dans la Comté D'Heriford.*

*J. A. Campbell Delin.*

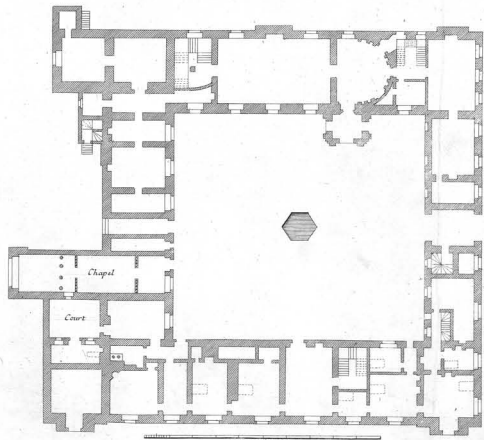
*J. H. Hulbergh Sculp.*



The Garden front of Wilton in Wiltshire the Seat of the Right Hon<sup>ble</sup> Thomas Earl of Pembroke & Montgomery, K<sup>t</sup> of the Most Noble Order of the Garter, &c. to whom this Plate is most humbly Inscrib'd.

a Scale of 60 Feet  
Extends 124

Elevation de la Maison de Wilton dans la Comté de Wilts.



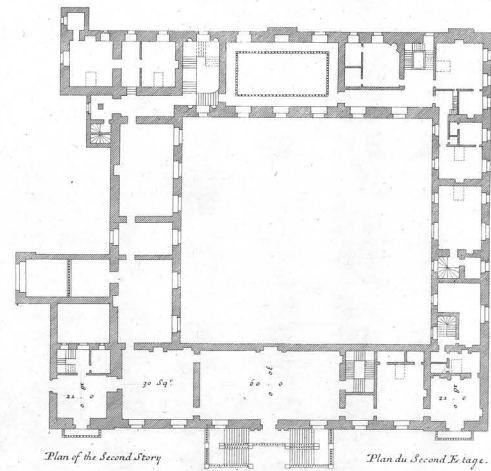
Plan of the first Story.

a Scale of 60 Feet

Plan du premier Etage.

Inigo Jones Inv. A. 1680.

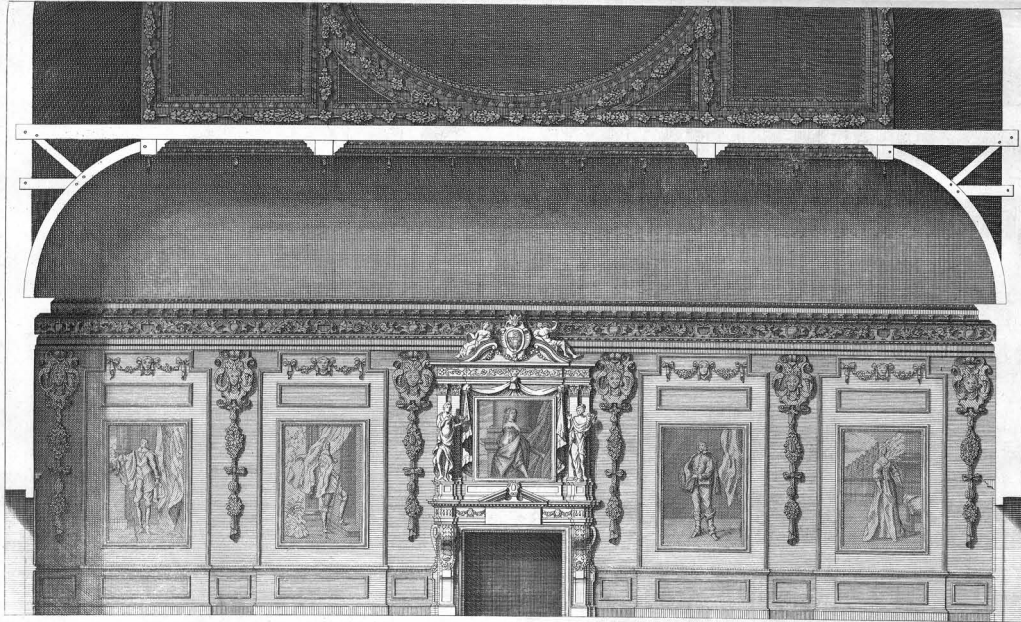
Geo. Campbell Delin.



Plan of the Second Story

Plan du Second Etage.

J. C. Hulbert Sculp.



*Section of the Great Dining Room at Wilton.*

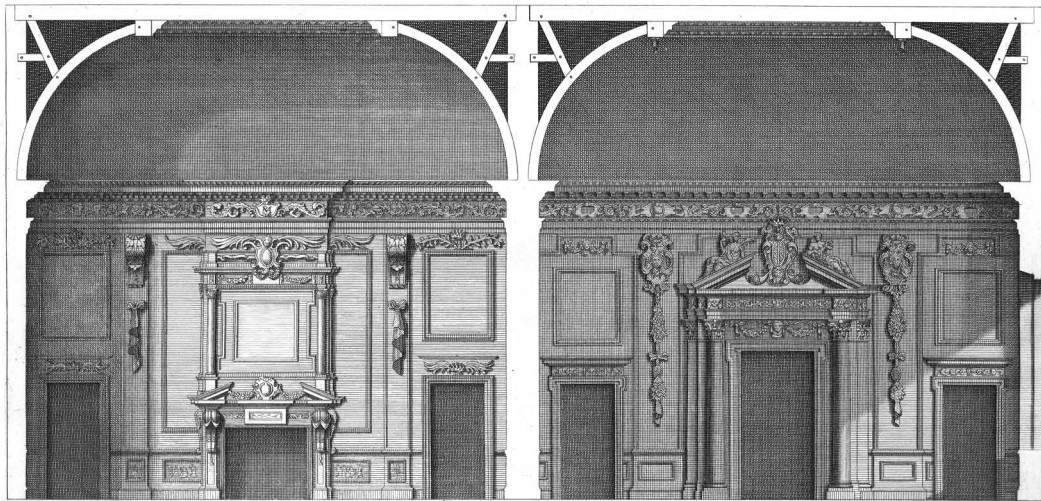
*20 Feet.  
Extends 60.*

*Section de la grande Salle.*

*Inigo Jones Inv.*

*Ch. Campbell Delin.*

*J. H. Hulstberg Sculp.*



a Scale of 30 Feet

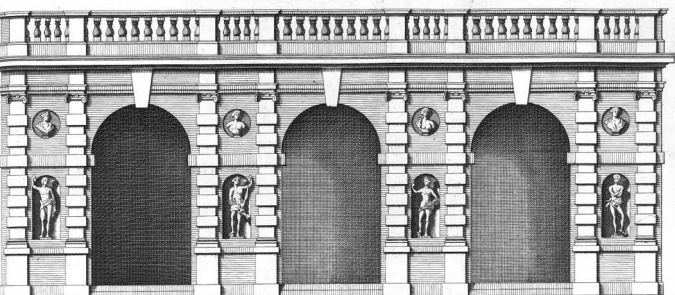
Section of the Salon.  
Section du Salon.

One End of the Great Dining Room.

Inigo Jones Inv.

Ca: Campbell Delin.

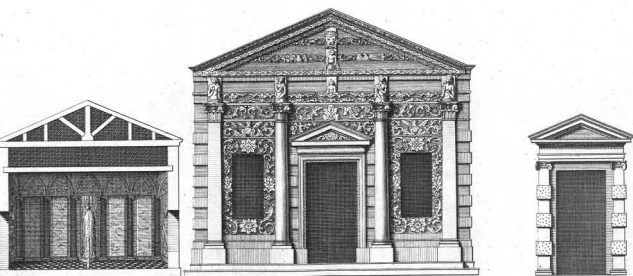
H. Hulbergh Sc.



a Scale of 30 Feet

Extends 52.

*The Loggia in the Bowling Green at Wilton.  
La Galerie au Jardins.*



*Section of the Grotto.*

22. 0

*The Garden Door.*

*Front of the Grotto at Wilton.*

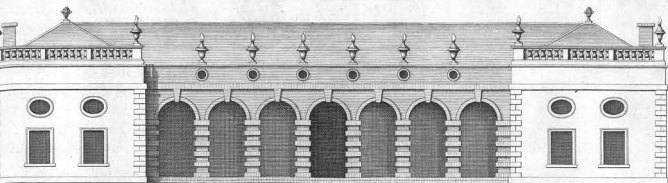
*Elevation de la Grotte.*

*This Plate is most humbly Inferrib'd to the R<sup>t</sup> Hon<sup>ble</sup> The Lord Herbert Colonel of his Majesty's Guards,  
Lord of the Bed Chamber to his Royal Highness the Prince of Wales &c. and Son and heir to the R<sup>t</sup> Hon<sup>ble</sup> the Earl of Pembroke &c.*

*Guigo Jones Inv:*

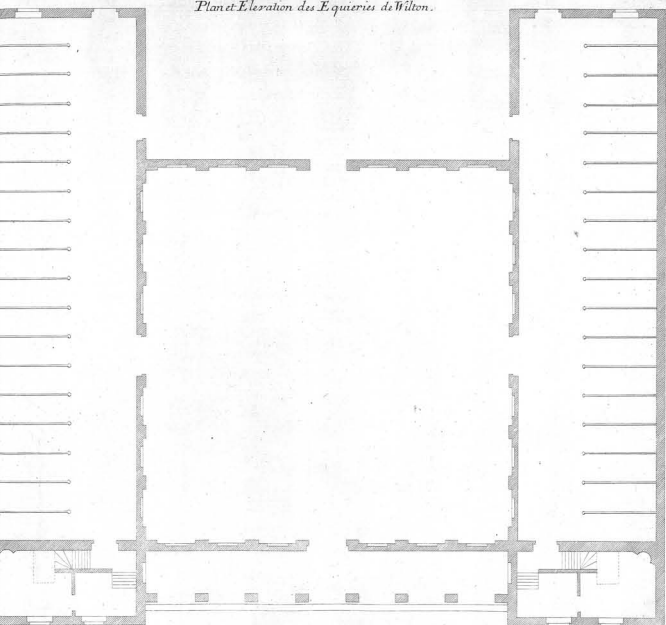
*Ca: Campbell Delin:*

*H. Hulsbergh Sc:*



*Plan and Elevation of the out Offices at Wilton.*

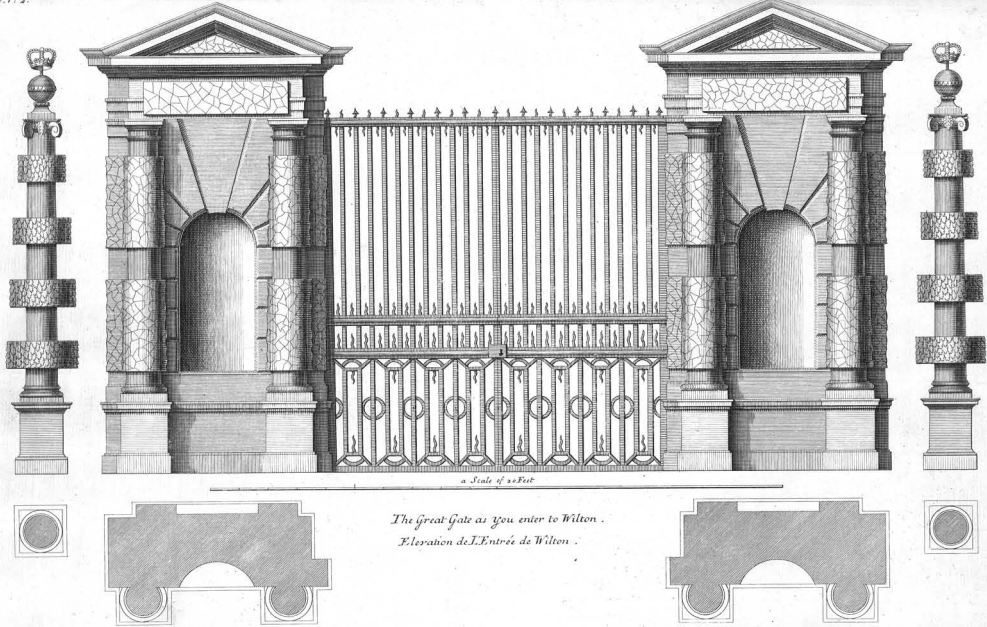
*Plan et Elevation des Ecuries de Wilton.*



*a Scale of 60 Feet*

*Extends 125*

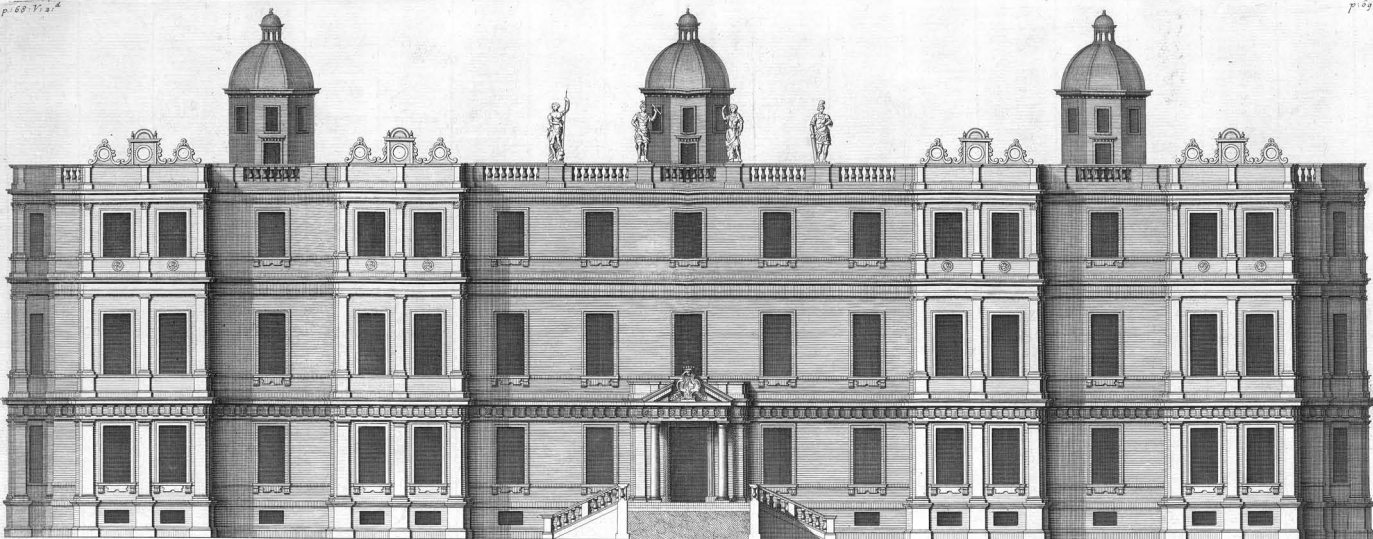




Inigo Jones Inv.

Ca: Campbell Delin.

H. Hulbergh Sc.

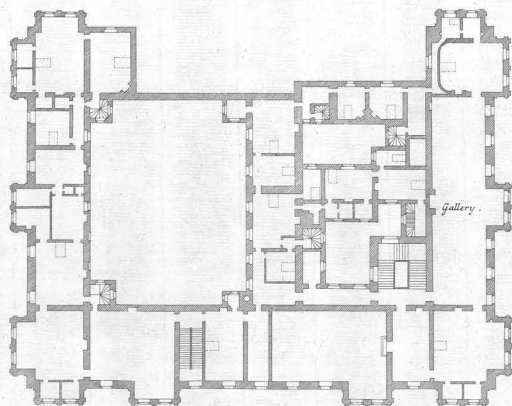


*This South Elevation of Long Leaze in Wiltshire the Seat of the R<sup>th</sup> Hon<sup>ble</sup> the Lord Vis<sup>count</sup> Weymouth &c. to whom this Plate is most humbly Inscrib'd.*

*a Scale of 60 Feet.*

*Extends 220.*

*Elevation Meridionale de la Maison de Long Leaze dans la Conté de Wilt.*

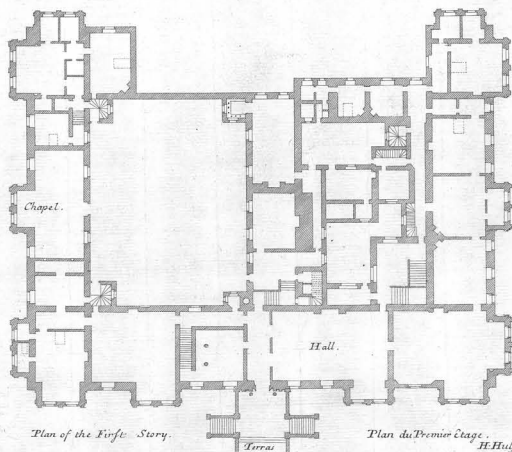


*Plan of the Second Story.*

*a Scale of 60 Feet.*

*Plan du Second Etage.*

*G. Campbell Delin.*

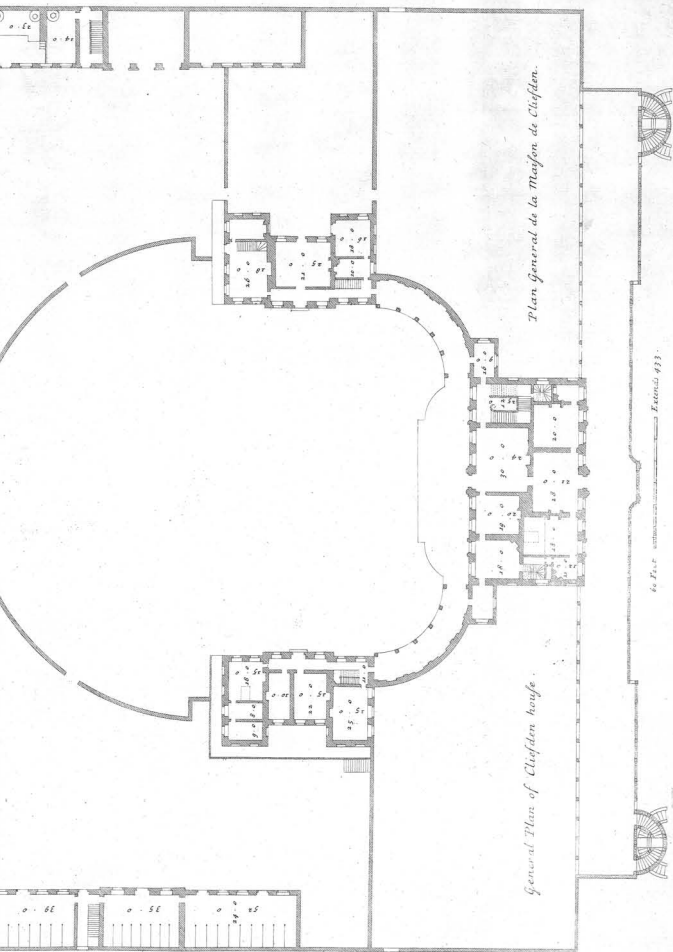


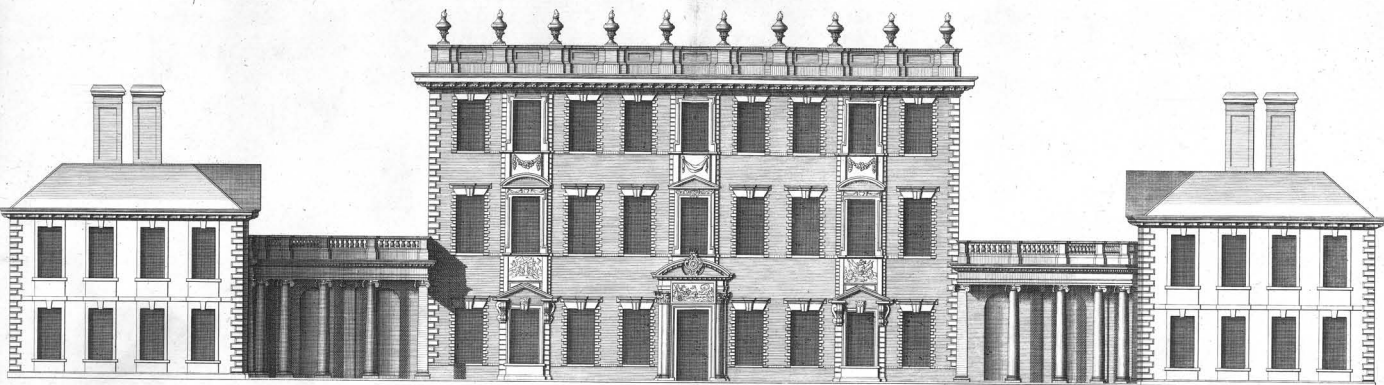
*Plan of the First Story.*


*Terrace*

*Plan du Premier Etage.*

*H. Busby Sculp.*





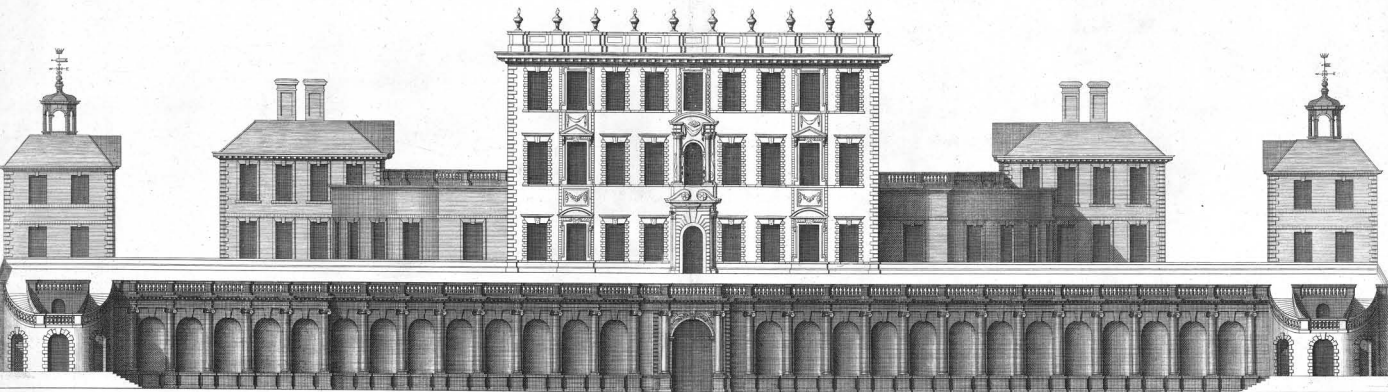
a Scale of 60 Feet  It extends 245

*The North Prospect of Cliefden house in Buckinghamshire the Seat of the Right Hon<sup>ble</sup> The Earl of Orkney, Generall of the Infantry, one of the Lords of his Majesties Bedchamber and Knight of the most ancient Order of the Thistle &c. to whom this Plate is most humbly Inscrib'd.*

*Elevation Occidentale de la Maison de Cliefden dans la Comté de Buckingham.*

*C. Campbell Delin.*

*H. Huskisson Sc.*

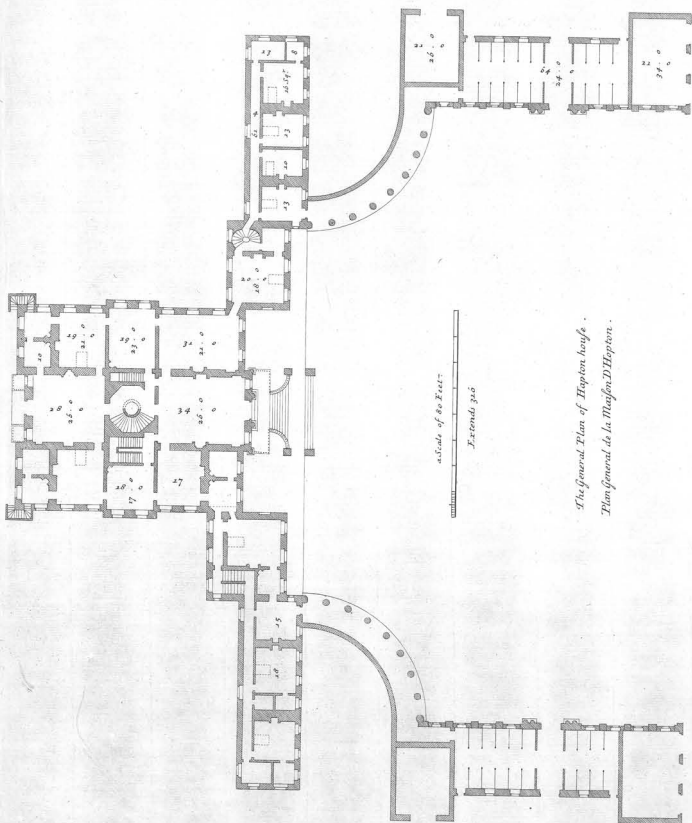


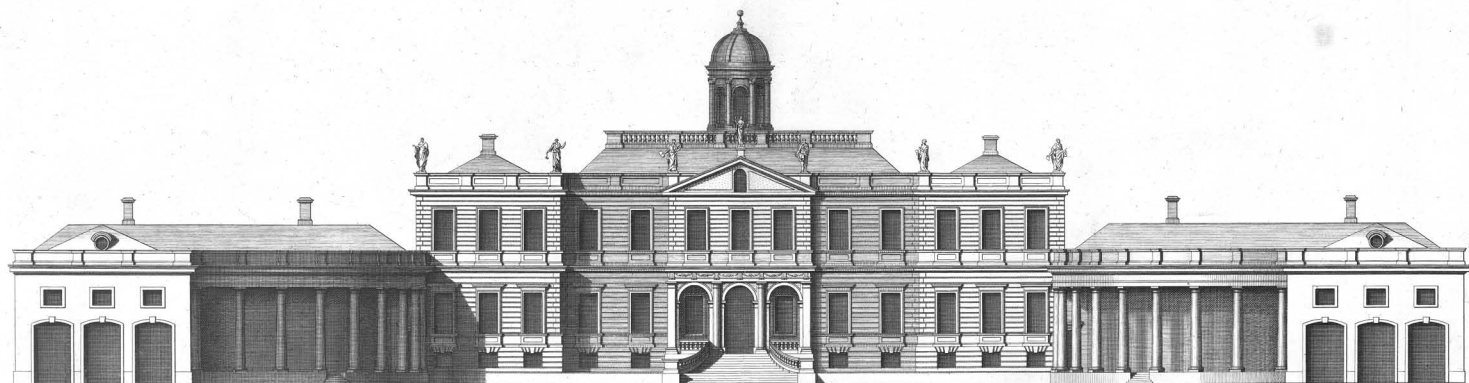
a Scale of 60 Feet  Extends 360

*The West-Front of Cliefden House:  
Is most humbly Inscrib'd to the R<sup>t</sup> Hon<sup>ble</sup> the Countess of Orkney.  
Elevation Occidentale de la Maison de Cliefden.*

*C. Campbell Delin.*

*H. Hulseburgh Sc.*





80 Feet  Extends 31 6

*The Elevation of the East Front of Heptones house in the Shire of Linlithgow in Scotland the Seat of the R<sup>t</sup> Hon<sup>ble</sup> the Earl of Heptones  
to whom this Plate is most humbly Inscrib'd. Invented by S<sup>r</sup> W<sup>m</sup> Bruce. 1700*

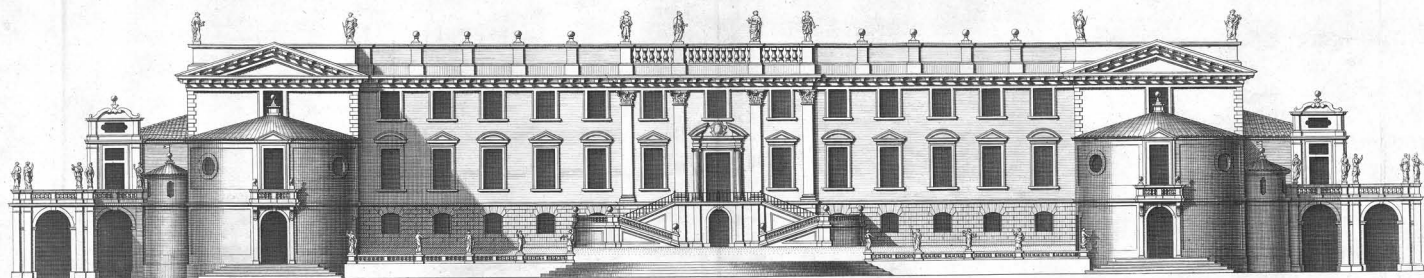
*Elevation Orientale de la Maison D'Heptones dans la Comté de Linlithgow en Ecosse .*

*Cs. Campbell Delin.*

*H. Hulbert Sculp.*







a Scale of 100 Feet

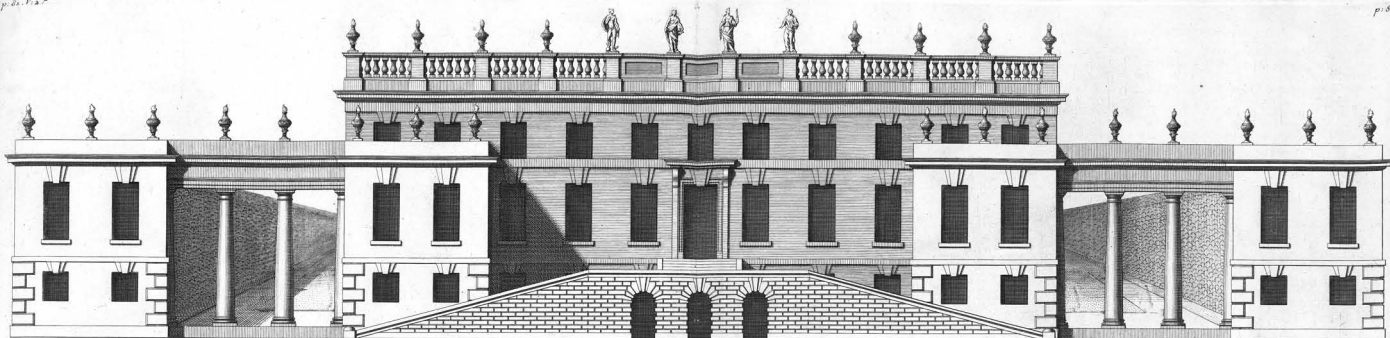
Extends 337

*The Elevation of Lower Hall in Wismoreland the Seat of the R<sup>t</sup> Hon<sup>ble</sup> the Lord Viscount Landsdale .  
to whom this Plate is most humbly Inscrib'd.*

*Elevation de la Maison de J. onther dans la Comté de Wismoreland.*

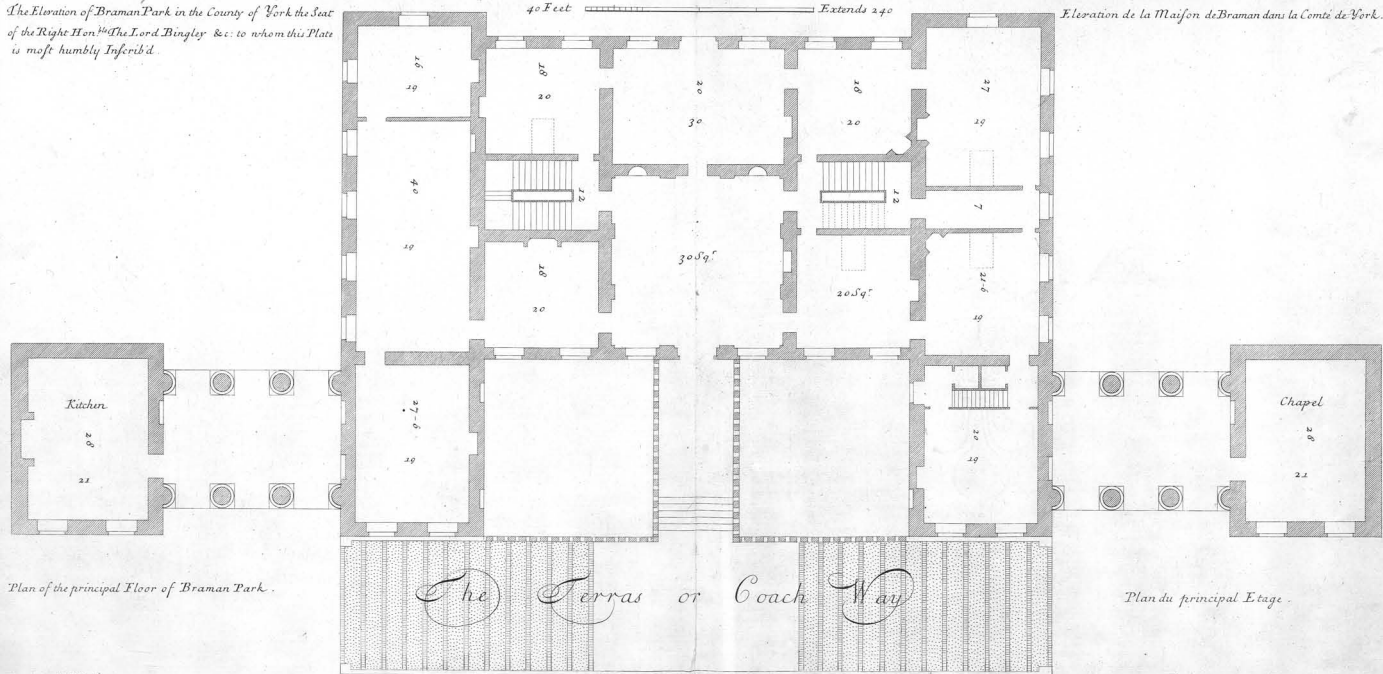
*C. Campbell Delin.*

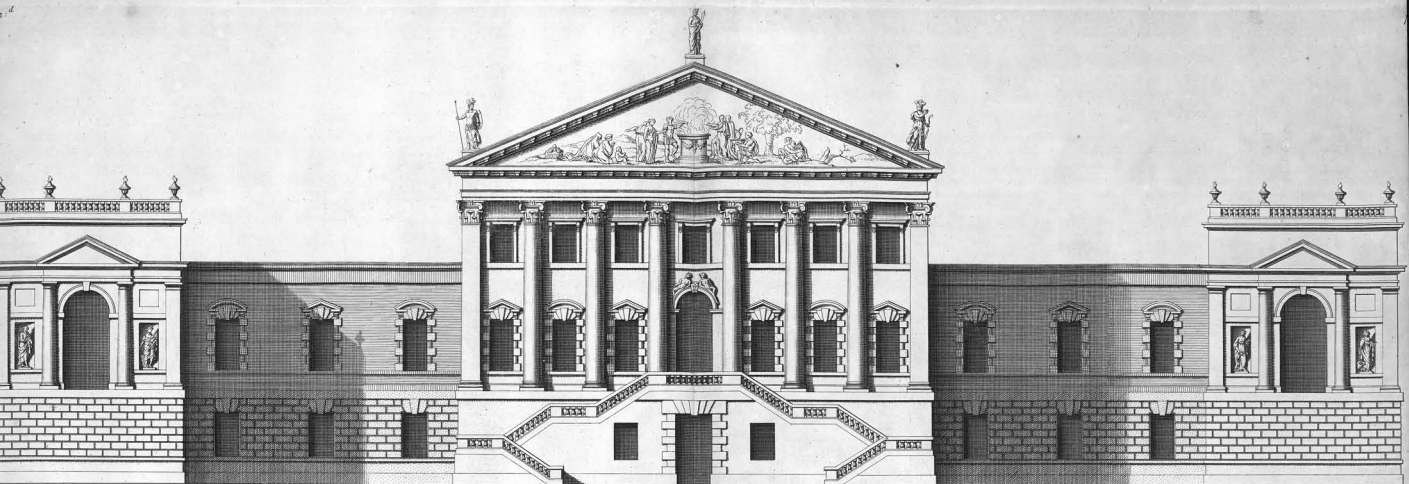
*H. Hulbergh Sculp.*



The Elevation of Braman Park in the County of York the Seat  
of the Right Hon<sup>ble</sup> The Lord Bingley &c. to whom this Plate  
is most humbly Inscrib'd.

Elevation de la Maison de Braman dans la Comté de York.

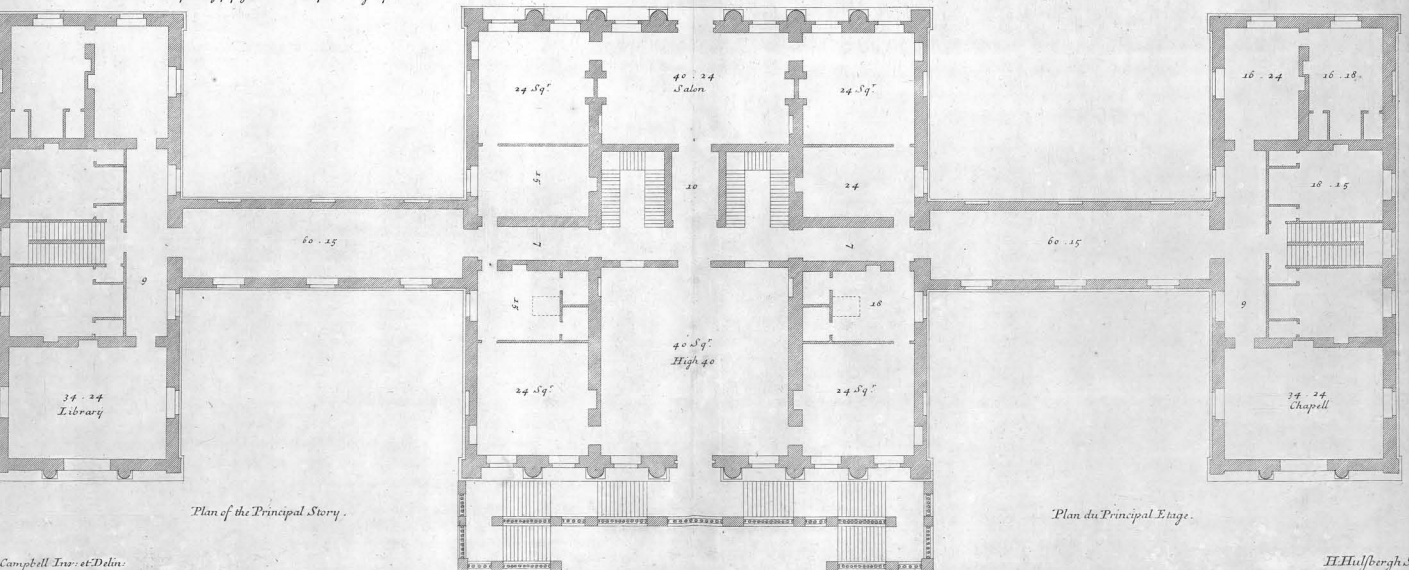




*This Elevation of a New Design of my Invention is most humbly Inscrib'd to the R.<sup>d</sup> Hon.<sup>ble</sup>  
Robert Walpole Esq<sup>r</sup> first Lord Com<sup>r</sup> of the Treasury &c.*

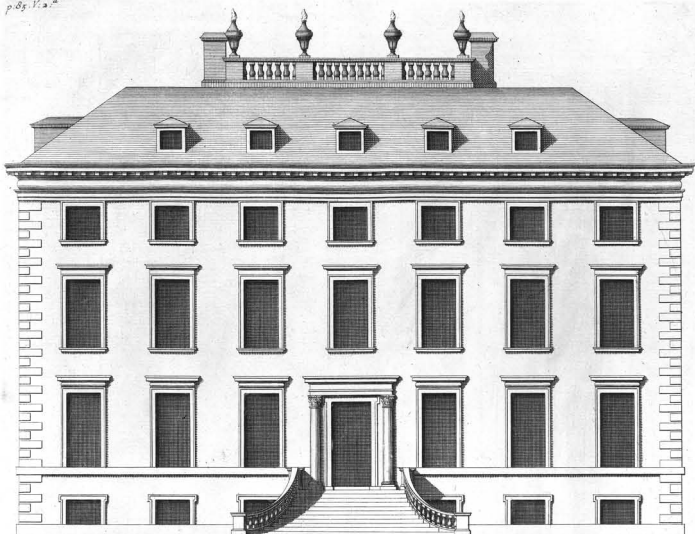
50 Feet: ————— Extends 500

*Elevation D'un Nouveau D'œuvre de mon Invention.*



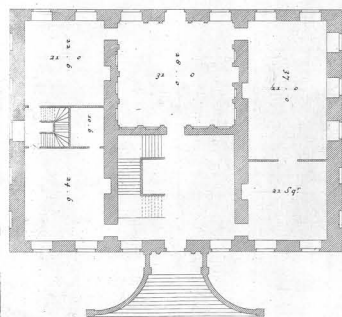
*Plan of the Principal Story.*

*Plan du Principal Etage.*



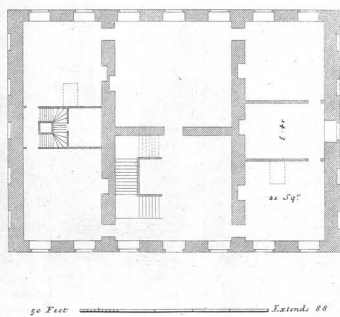
50 Feet ————— Extends 68

*The Elevation of Chevening house in Kent the Seat of the R<sup>ts</sup> Hon<sup>ble</sup> the late Earl of Suffolk. is most humbly Inferred to the R<sup>ts</sup> Hon<sup>ble</sup> the Countess Dowager of Suffolk.*  
*Elevation de la Maison de Chevening dans la Comté de Kent.*



*Plan of the First Floor.*  
*Plan du Premier Etage.*

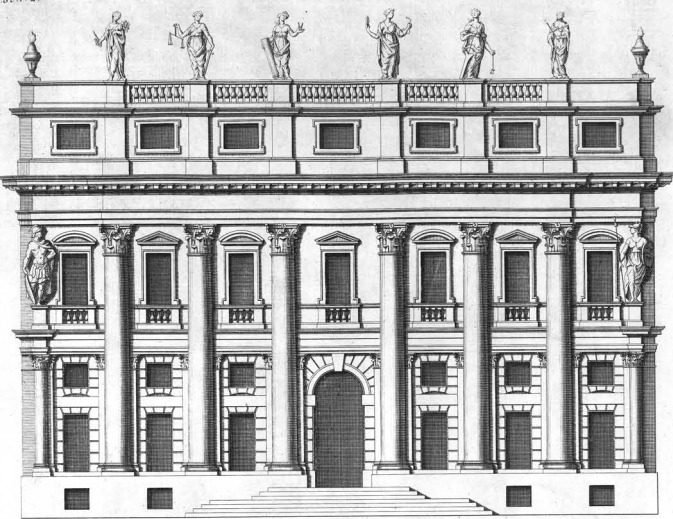
Juigo Jones Inv.



*Plan of the Second Floor.*  
*Plan du Second Etage.*

C. Campbell Delin.

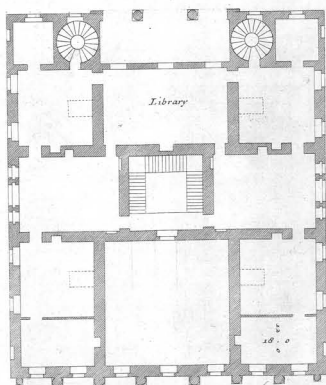
J. H. B. Sculp.



40 Feet

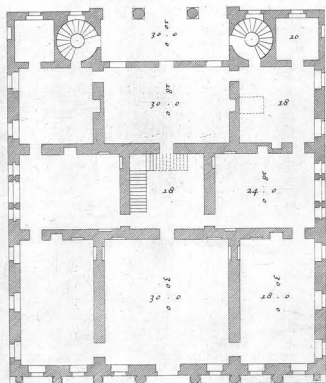
Extends 76

*This new Design of my Invention is most humbly Inscr'd to the R.<sup>d</sup> Hon.<sup>ble</sup> James Stanhope Esq.<sup>r</sup> principal Secretary of State &c :  
Elevation D'un Nouveau Dessein de mon Invention .*



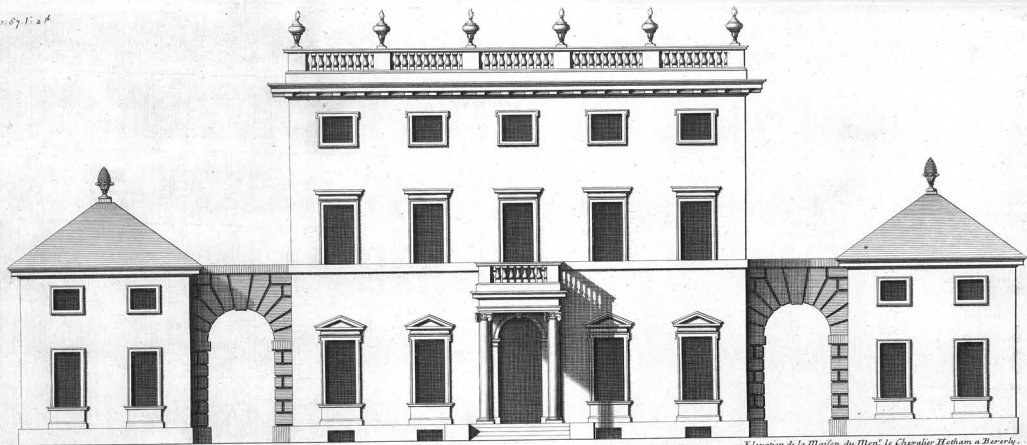
*Plan of the Second Story.  
Plan du Second Etage.*

*Ca: Campbell In: & Delin:*



*Plan of the first Story.  
Plan du Premier Etage*

*JH Hul/bergh Sc:*

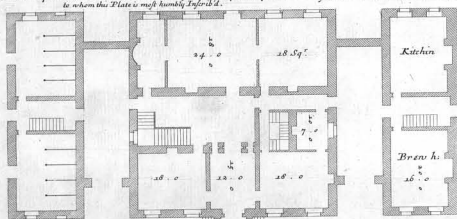


The Elevation of St. Charles Hotham Bar's his House in Beverly in Yorkshire - to whom this Plate is most humbly Inscr'd.

30 Feet

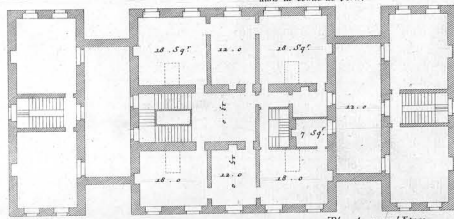
Extends 100.

Elevation de la Maison du M<sup>re</sup> le Chevalier Hotham a Beverly - dans la Comté de York.



Plan of the first Story.

Plan du premier Etage.



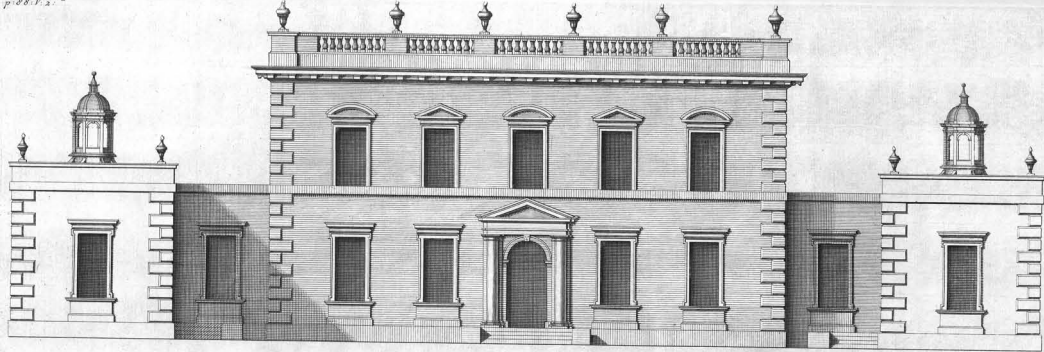
Plan of the second Story.

Plan du second Etage.

30 Feet

C<sup>a</sup> Campbell Inv: et Delin:

H. Hulbergh Sculp:

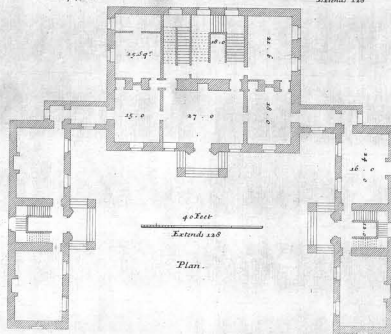


*The Elevation of Chester Lee-street in the County of Durham, the Seat  
of John Hedderworth Esq<sup>r</sup> to whom this Plate is most humbly Inscrib'd.*

*a Scale of 90 Feet*

*Extends:* 228

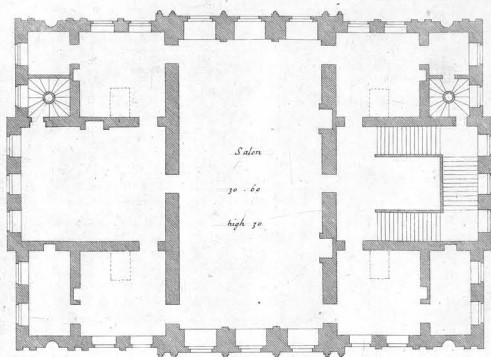
*Elevation de la Maison de Chester Lee street dans la Comté de Durham.*



*Calenus Campbell Inv: et Delin 1716.*

H. Hulstburgh Sculp:

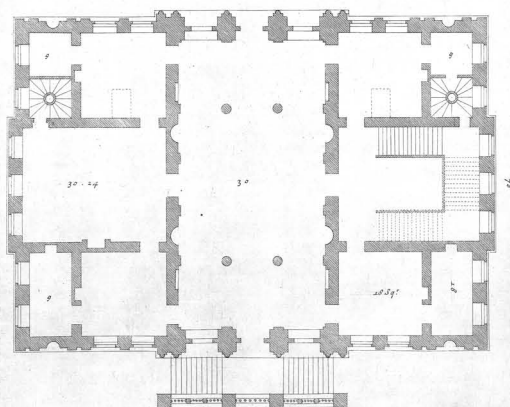




*Plan of the Second Story.*

*Plan du Second Etage.*

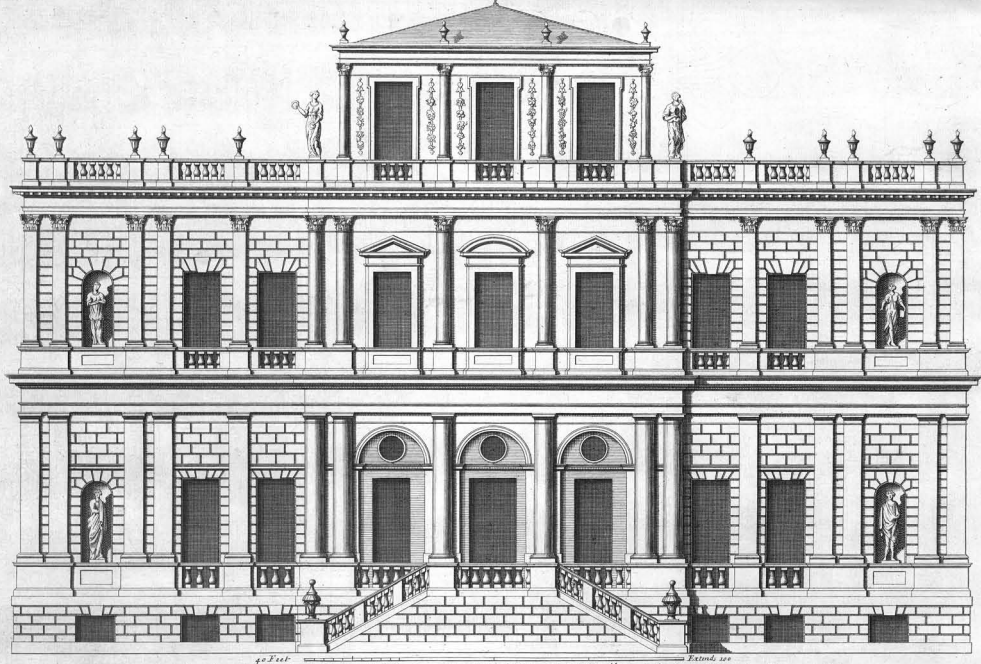
60 Feet  120 Feet



*Plan of the first Story of my Design for Mr Secretary Methven.*

*Plan du premier Etage.*



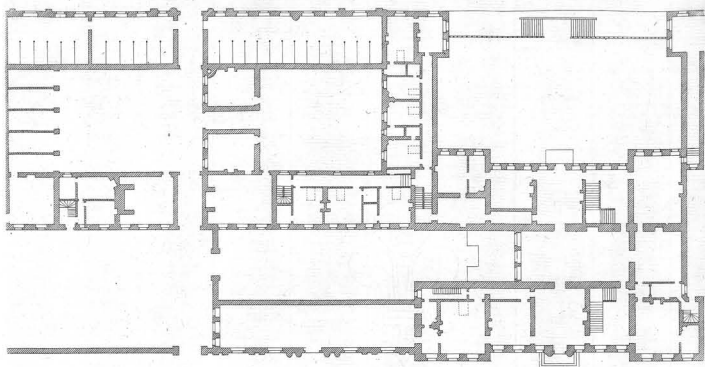


*This New Design of my Invention in the Theatrical Style, is most humbly Inscrib'd to the R.<sup>ts</sup> Hon.<sup>ble</sup> Paul Mathon-en-J<sup>re</sup> principal Secretary of State &c:  
Elevation d'un Nouveau Dessein de mon Invention.*

*Ca: Campbell Inv: et Delin:*

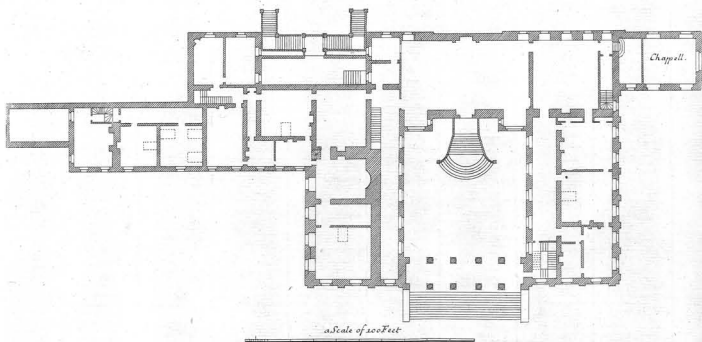
*H. Hulstbergh Sc:*

a Scale of 100 Feet



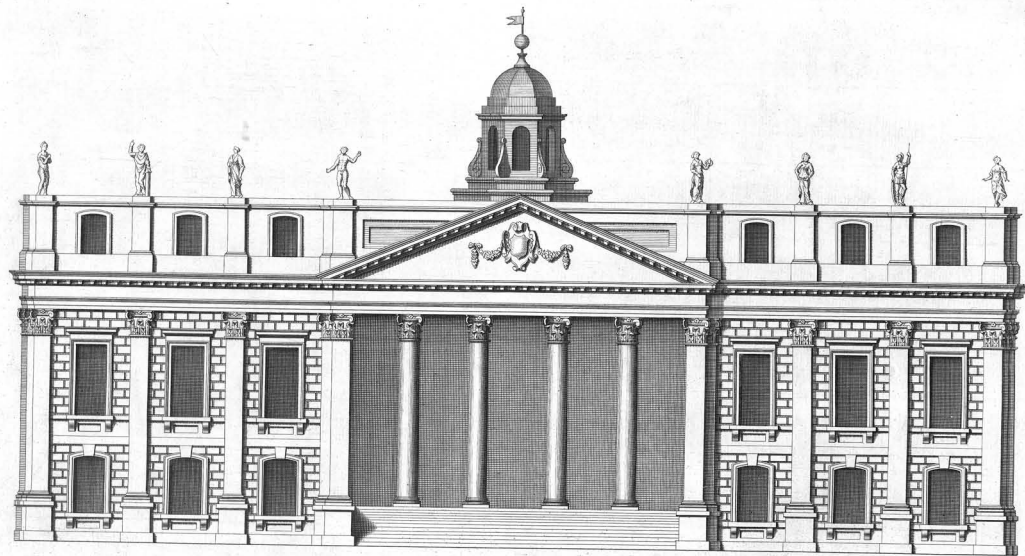
*Plan of the principal Story of Dyrham house.*

*Plan du principal Etage de la Maison de Dyrham.*



*Plan of the principal Story of Witley.*

*Plan du principal Etage de Witley.*



a Scale of 60 Feet

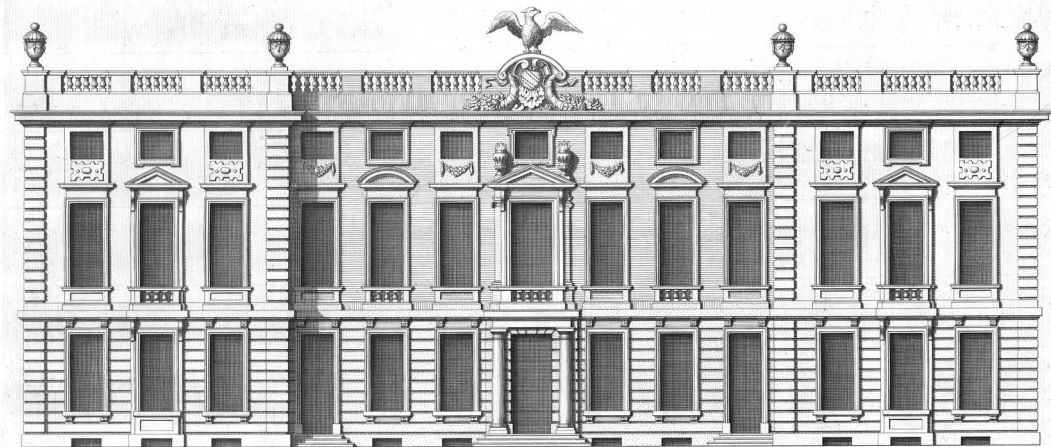
Extends 140.

*The Elevation of Witleham in Somersetshire, the Seat of the R<sup>t</sup> Hon<sup>ble</sup> S<sup>r</sup> William Wyndham Bart<sup>l</sup> to whom this Plate is most humbly Inscrib<sup>d</sup>.*

*Elevation de la Maison de Witleham, dans la Comté de Somerset.*

*Ca: Campbell Delin:*

*J. H. Hulstburgh Sc:*



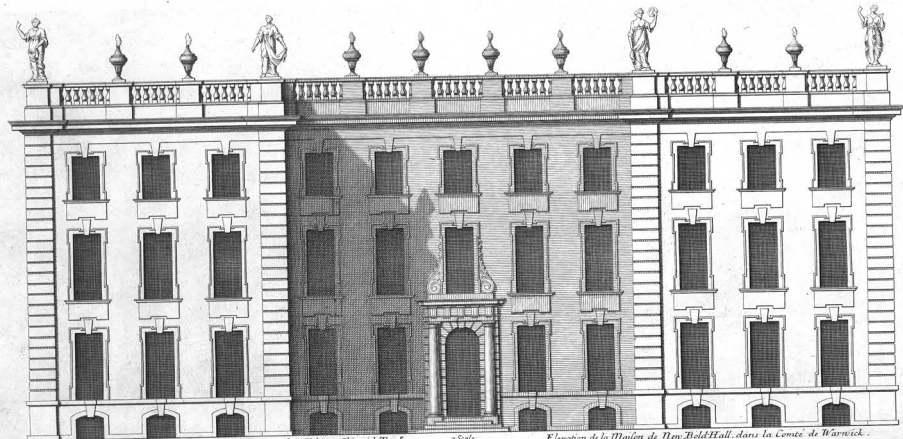
40 Feet ————— Extends 130

*The Elevation of Dyrham house in Gloucestershire the Seat of the R<sup>t</sup> Hon<sup>ble</sup> William Blathwayt Esq<sup>r</sup>  
to whom this Plate is most humbly Inscrib'd. Invented by M<sup>r</sup> Salmon.*

*Elevation de la Maison de Dyrham dans la Comté de Gloucester.*

*C. Campbell Delin.*

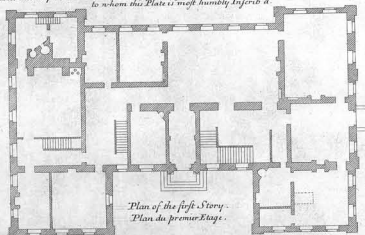
*H. Hulshof Sculp.*



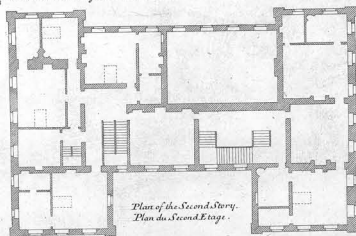
*The Elevation of New Bold-Hall in Warwickshire, the Seat of S<sup>t</sup>. Fulwar Skipwith Bar<sup>o</sup>  
to whom this Plate is most humbly Inscrib<sup>d</sup>.*

*Elevation de la Maison de New Bold-Hall, dans la Comté de Warwick.*

*a Scale  
for the Front.*



*Plan of the first Story.  
Plan du premier Etage.*

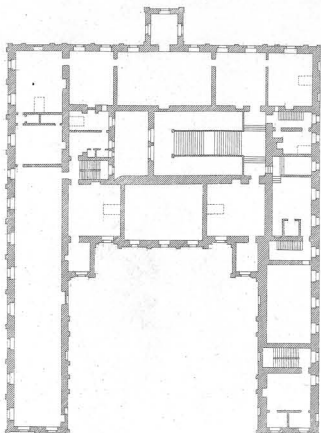


*Plan of the Second Story.  
Plan du second Etage.*

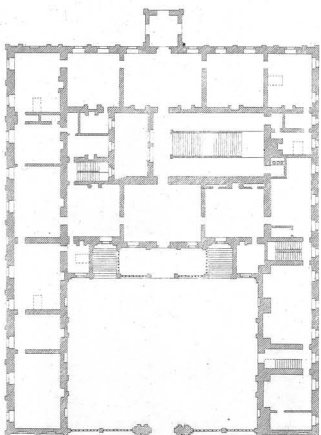
*C. Campbell Delin.*

*H. Hulstburgh Sc.*

Fig. 12d

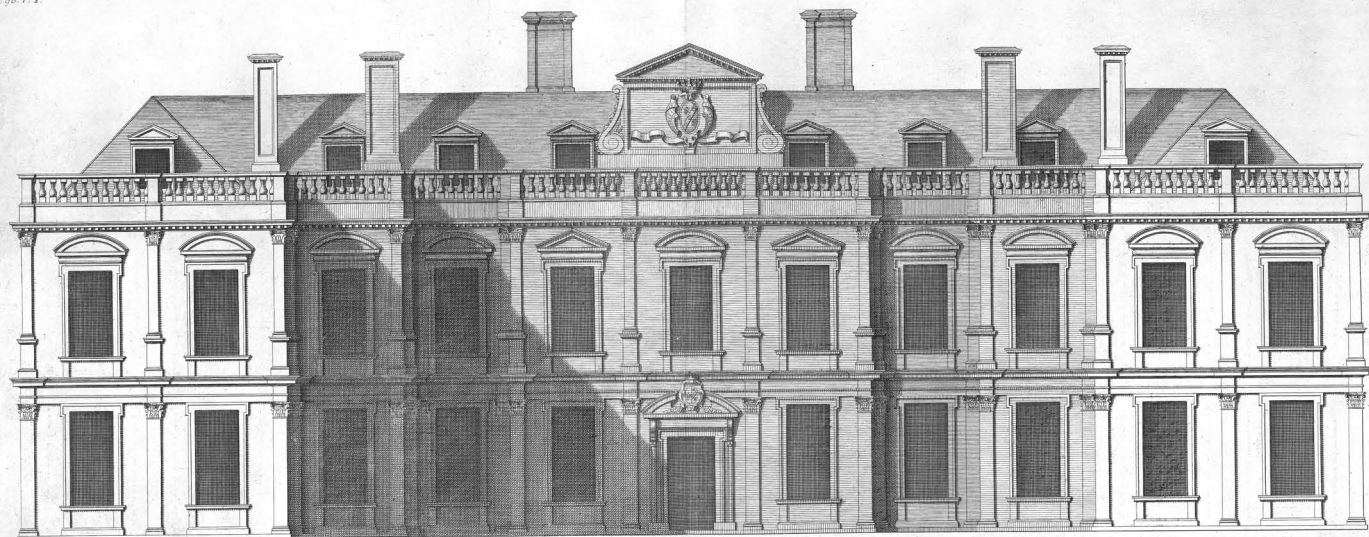


*Plan of the Second Story.*  
*Plan du Second Etage.*



see Text

*Plan of the first Story of Althorp.*  
*Plan du premier Etage.*



a Scale of 80 Feet

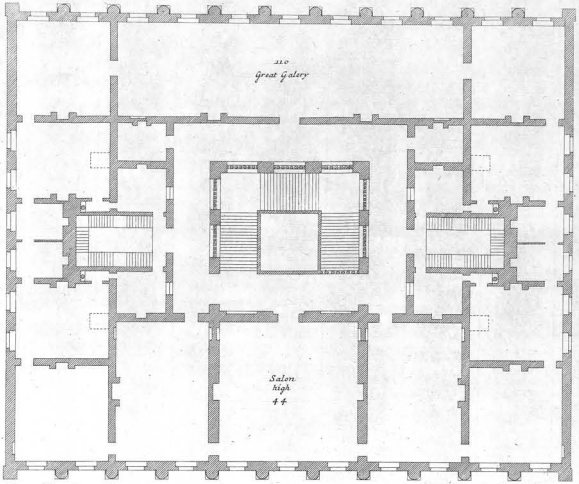
Extends 139-3

*The Elevation of Ulthrop in Northamptonshire The Seat of the R<sup>t</sup> Hon<sup>ble</sup> the Earl of Sunderland &c:  
to whom this Plate is most humbly Inscrib<sup>d</sup>.*

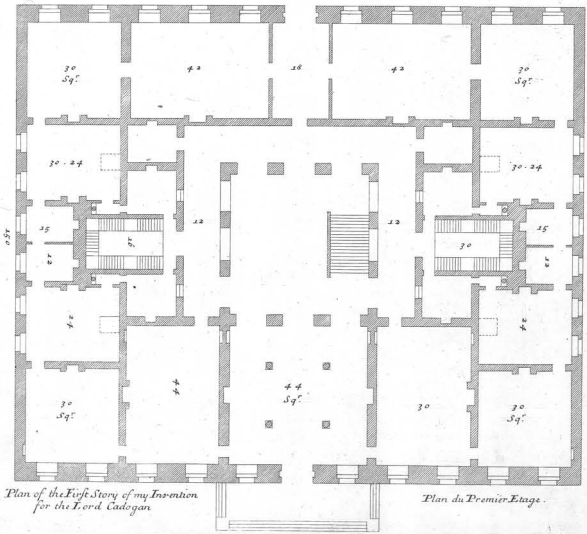
*Elevation de la Maison D'Ulthrop dans le Comté de Northampton.*

C<sup>a</sup>. Campbell Delin<sup>e</sup>

JH. Hüfner Sc<sup>i</sup>

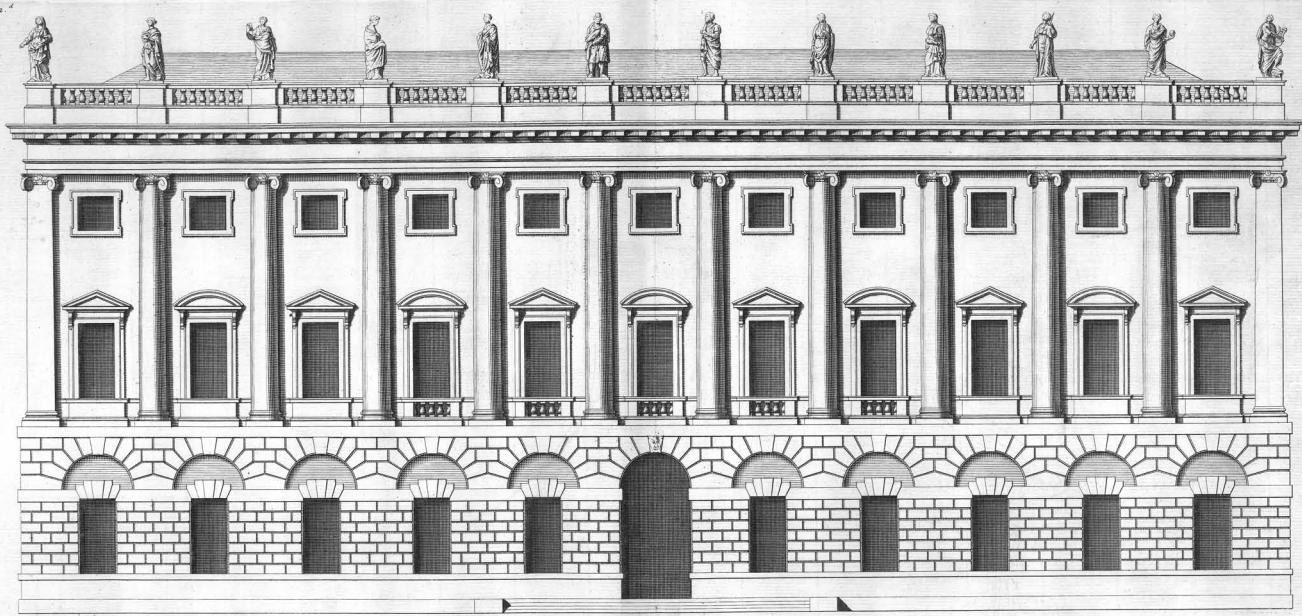


Plan of the Second Story 60 Feet Extends 180 Plan du Second Etage.



Plan of the First Story of my Invention for the Lord Cadogan Plan du Premier Etage.





a Scale of 40 Feet      Extends 180

The Elevation of a New Design of my Invention in the Palatial Style, is most humbly Inscr'd to the R<sup>t</sup> Hon<sup>ble</sup> the Lord Cadogan, his Majesty's Ambassador Extraordinary to the States General, L<sup>t</sup> Gen<sup>l</sup> of his Majesty's Forces, Governor of the Isle of Wight, and R<sup>t</sup> of the most Ancient Order of the Thistle &c:  
*Elevation D'un Nouveau D'ssein de mon Invention.*

Campbell Insc: et Delin:

H. H. Falstaff Sculp: