

44/792
L. 5
C
M
H
180
VITRUVIUS BRITANNICUS,

or
The British Architect,
Containing

The Plans, ELEVATIONS, and Sections
of the Regular Buildings, both
PUBLICK and PRIVATE,

IN
GREAT BRITAIN,

*With Variety of New Designs; in 200 large Folio Plates, Engraven
by the best Hands; and Drawn either from the Buildings themselves,
or the Original Designs of the Architects;*

IN II VOLUMES

VOL. I. *by Colen Campbell Esq.*

VITRUVIUS BRITANNICUS,

ou
L'Architecte Britannique,
Contenant

Les Plans, ELEVATIONS, & Sections
des Bâtimens Reguliers, tant

PARTICULIERS que PUBLICS

de la Grande Bretagne,

*Compris en 200 grandes Planches gravees en taille douce par les
Meilleurs Maitres, et tous ou desinez des Bâtimens memes, ou,
copiez des Dessesins Originaux des Architectes:*

EN DEUX TOMES.

TOME I.

Par le Sieur Campbell.

CUM PRIVILEGIO REGIS.

*Sold by the Author over against Douglas Coffee-house in S. Marins-lane, John Nicholson in
Little Britain, Andrew Bell at the Crois-Keys in Cornhil, W. Taylor in Pater-Noller-Row, Henry
Clements in S. Pauls Church-yard, And, Jos. Smith in Exeter-Change. LONDON MDCCXVII.
J. Short sculp.*

To his most Sacred Majesty
King George,

Vitruvius Britannicus
OR THE
British Architect
Is most humbly inscrib'd, By

Wm. Kent
Can it Please your Majesty
Yo^r Maj.^{ties} most faithfull & Obedient Subject
Colen Campbell.

THE INTRODUCTION.



THE general Esteem that Travellers have for Things that are Foreign, is in nothing more conspicuous than with Regard to Building. We travel, for the most part, at an Age more apt to be imposed upon by the Ignorance or Partiality of others, than to judge truly of the Merit of Things by the Strength of Reason. It's owing to this Mistake in Education, that so many of the British Quality have so mean an Opinion of what is performed in our own Country; tho', perhaps, in most we equal, and in some Things we surpass, our Neighbours.

I have therefore judged, it would not be improper to publish this Collection, which will admit of a fair Comparison with the best of the Moderns. As to the Antiques, they are out of the Question; and, indeed, the Italians themselves have now no better Claim to them than they have to the Purity of the Latin.

We must, in Justice, acknowledge very great Obligations to those Restorers of Architecture, which the Fifteenth and Sixteenth Centuries produced in Italy. Bramante, Barbaro, Sanfiovino, Sangallo, Michael Angelo, Raphael Urbin, Julio Romano, Serglio, Labaco, Scamozzi, and many others, who have greatly help'd to raise this Noble Art from the Ruins of Barbarity: But above all, the great Palladio, who has exceeded all that were gone before him, and surpass'd his Contemporaries, whose ingenious Labours will eclipse many, and rival most of the Ancients. And indeed, this excellent Architect seems to have arrived to a Ne plus ultra of his Art. With him the great Manner and exquisite Taste of Building is lost; for the Italians can no more now relish the Antique Simplicity, but are entirely employed in capricious Ornaments, which must at last end in the Gothick.

For Proof of this Assertion, I appeal to the Productions of the last Century: How affected and licentious are the Works of Bernini and Fontana? How wildly Extravagant are the Designs of Boromini, who has endeavoured to debauch Mankind with his odd and chimerical Beauties, where the Parts are without Proportion, Solids without their true Bearing, Heaps of Materials without Strength, excessive Ornaments without Grace, and the Whole without Symmetry? And what can be a stronger Argument, that this excellent Art is near lost in that Country, where such Absurdities meet with Applause?

INTRODUCTION.

It is then with the Renowned Palladio we enter the Lists, to whom we oppose the Famous Inigo Jones: Let the Banqueting-house, those excellent Pieces at Greenwich, with many other Things of this great Master, be carefully examined, and I doubt not but an impartial Judge will find in them all the Regularity of the former, with an Addition of Beauty and Majesty, in which our Architect is esteemed to have out-done all that went before; and when those Designs he gave for Whitehall, are published, which I intend in the Second Volume, I believe all Mankind will agree with me, that there is no Palace in the World to rival it.

And here I cannot but reflect on the Happiness of the British Nation, that at present abounds with so many learned and ingenious Gentlemen, as Sir Christopher Wren, Sir William Bruce, Sir John Vanbrugh, Mr. Archer, Mr. Wren, Mr. Wynne, Mr. Talman, Mr. Hawkimore, Mr. James, &c. who have all greatly contributed to adorn our Island with their curious Labours, and are daily embellishing it more.

I hope, therefore, the Reader will be agreeably entertained in viewing what I have collected with so much Labour. All the Drawings are either taken from the Buildings themselves, or the original Designs of the Architects, who have very much assisted me in advancing this Work: And I can, with great Sincerity, assure the Publick, That I have used the utmost Care to render it acceptable; and that nothing might be Wanting, I have given the following Explanation to each Figure.



AN

A N
E X P L A N A T I O N
Of all the
P L A T E S
I N
The First Volume.

S. Paul's Church, London, p. 3, 4.



HIS Noble Fabrick was begun by Sir Christopher Wren, Anno 1672, and happily finished by him, 1710. I have made two Plates, the Plan and West Front; and did intend the Section, but was prevented by the Architect, who proposed to publish it himself. I have omitted the Rusticks and fluting the Columns in both Orders, to avoid the Confusion of so many Lines in so small a Scale. Here is a Rustick Basement that carries two entire Orders, the first is *Corinthian*, 4 Foot in Diameter, with a plain Entablature; there is an Arcade all round the Building, that serves for Lights: The second Order is Composite, proportionably diminished with regard to the Inferior; here a very rich Tabernacle reigns throughout the whole Inter-Columnations, very like that excellent Model in the *Rotundo at Rome*, but with this difference, that in this the Pedestal is pierced, to give Light. A more particular Account is to be taken from the Design by the Scale and Compass, which would be too tedious in this Introduction. The whole Fabrick is performed in Stone, by those excellent and judicious Artists, Mr. Edward Strong, Senior and Junior, whose consummate Knowledge in their Profession, has greatly contributed to adorn the Kingdom; and it's beyond Exception, that this is the second Church in the World.

S. Peter's at Rome, p. 5, 6, 7.

I Thought it would not be improper to present the Curious with the Plan, Elevation, and Section of this Majestick Building; and the more that I dare safely aver, that it's the most correct, with respect to the Truth of Architecture, or Cleanness of Engraving, than was ever published; and the Reader may have the Satisfaction to view both, reduced to *British* Measure. The Critics generally condemn the excessive Height of the *Attick*, which they confine to a third of the inferior Column. That the Pediment, supported by a *Tetrastyle*, is mean for so great a Front, which at least would demand an *Hexastyle*; that the Breaks are trifling, and the Parts without any Proportion; that the great Body of the Church, projected by *Carlo Maderno*, has extremely injured the August Appearance of the *Capola*, which is very much lost by being removed so

far from the East Front, contrary to *Michael Angelo's* Design, who conformed the whole Plan to a Square, wherein he described a *Grecian Cross*. But all agree, that the Width is noble, and the *Capola* admirable: It was begun Anno 1513, and finished 1640.

A new Design for a Church in Lincolns-Inn Fields, p. 8, 9.

THIS Design I made, at the Desire of some Persons of Quality and Distinction, when it was proposed to have a Church in the Noble Square. The Plan is reduced to a Square and Circle in the Middle, which, in my weak Opinion, are the most perfect Figures. In the Front I have removed the Angular Towers, at such a distance, that the great *Capola* is without any Ambarafs: Here is a regular *Hexastyle* that commands the Front, which, with the other Parts, are all in certain Measures of Proportion. I have introduced but one single *Corinthian* Order, supported by a full Basement, and finished with an *Attick* and *Ballustrade*. The *Capola* is adorned with a single Colonade of detached Columns; the whole is dress'd very plain, as most proper for the fulphurous Air of the City, and, indeed, most conformable to the Simplicity of the Ancients. Done Anno 1712.

S. Philip's Church at Birmingham, p. 10, 11.

THIS Church is designed by the ingenious Mr. *Archer*; and is justly esteem'd a very beautiful Structure. Anno 1710.

The Banqueting House at Whitehall, p. 12, 13.

THIS incomparable Piece was designed by the immortal *Jones*, as one Pavilion for that admirable Model he gave for a Royal Palace; and if this Specimen has justly commanded the Admiration of Mankind, what mult the finished Piece have produced? I hope *Britain* will still have the Glory to accomplish it, which will as far exceed all the Palaces of the Universe, as the Valour of our Troops and Conduct of our Generals have surpassed all others. Here our excellent Architect has introduced Strength with Politeness, Ornament with Simplicity, Beauty with Majesty: It is, without Dispute, the first Room in the World, and was built Anno 1616.

The

The Queen's House at Greenwich, p. 14, 15.

THIS is by the same Architect, and was a Place of Retirement for the Queen-Mother. I have made two Plates: The Plan is near a Square, being 116 Foot by 120; the Proportion of the Rooms are extream juſt; and the great Hall is admirable, making an exact Cube of 40 Foot. In the Front is a noble Ruſtick Baſement, which ſupports a beautiful and regular Loggia of the *Ionick* Order, finiſhed with a juſt Entablature and Balluſtrade round the whole Building, which was executed *Anno 1639.*

The Great Gallery in Somerſet Gardens, p. 16.

THIS Noble Arcade was taken from a Deſign of *Inigo Jones*, but conducted by another Hand: Some object, that the great Cornice is too camuſe, and that the Dreſs of the Windows have not Relief enough, which is only chargeable upon the Execution; but all agree, that the Proportions are juſt, and the Deſign excellent. I have neglected the Plan, being of little Uſe on this Occaſion. It was built *Anno 1662.*

Gunnerybury Houſe, near Brentford, p. 17, 18.

THIS Houſe was executed by Mr. *Webb*, Diſciple to *Jones*, from a Deſign of his great Maſter. I have made two Plates; the firſt is the Plan of the firſt and ſecond Floor; the Apartments are noble, regular, and commodious, the Rooms well-proportioned; the ſecond is the Front, which contains a large plain Baſement, ſupporting a handſome *Corinthian* Loggia. Some find the Inter-Columnation in this Hexaſtyle too open, and that to leave out the Freeze and Architrave of each ſide the Pediment, is a Licence not to be introduced without great neceſſity. It was built *Anno 1663.*

A new Deſign for the Duke of Argyle, p. 19, 20.

I HAVE inſcrib'd this Deſign to this illuſtrious Name, whoſe great Actions have filled the World with Surprize and Admiration; *Ramillies* and *Tanniers* are immortal. And as it's my greateſt Honour to receive my Blood from his Auguſt Houſe, I thought I could no where ſo properly conſecrate the firſt Effay of my Invention, as an eternal Monument of the deepeſt Reſpect and Gratitude. I have given two Plates: In the firſt are two Plans in a Square of 112 Foot; the Apartments of State are below, raiſed from the Court by 6 Steps which leads into the great Hall, making a Cube of 50 Foot, and has a Poggio within dividing the two Stories; from the Hall you enter the Salon, attended with two noble Apartments of State fronting the Gardens; all the Rooms are either upon the Square, the Diagonal, or other Proportions univerſally received: In the ſecond Story is a large Library, an Antichamber of each ſide, with double Apartments; over which are *Mezanins*, for accommodating the Family, illuminated by low Lanterns from the Leads, whereby the Maſtity of the Front is preſerved from the ill Effect of crowded Apertures. The ſecond is the Front, raiſed from the Plinth which ſupports the Ruſticks, adorned with a Composite Order of 4 Columns, with a regular Entablature and Balluſtrade; the Windows are dreſs'd in the *Palladian* manner: And I have endeavour'd to reconcile the Beauty of an Arcade in the ancient Buildings with the Conveniency of the Moderns, but muſt leave it to others to judge of the Succeſs. *Anno 1714.*

The firſt Deſign for Sir Richard Child, Bar. p. 21, 22.

THIS was intended for *Wanſled*, the Seat of Sir *Richard Child*, in a moſt charming Situation, where are the nobleſt Gardens now in the Kingdom: In this I was a little confined as to the Dreſs of the

Windows, which are without Pediments, and ſeveral other Conveniences being wanting, the following Deſign was preferred.

The ſecond Deſign for Sir Richard Child, p. 23, to p. 27. incluſive.

THE firſt Plate contains the Plan of the principal Story, extended 260 Foot, raiſed from the Court by a large Ruſtick Baſement 15 Foot in Height: The Situation requiring this Height, to afford the State-Apartments a Proſpect to theſe excellent Gardens. You aſcend from the Court by double Stairs of each ſide, which land in the Portico; and from thence into the great Hall, 51 Foot long, and 36 wide, and in Height the ſame: This leads into the Salon, being an exact Cube of 30 Foot, attended with two noble Apartments of State, all fronting the Gardens. To the great Court are excellent Apartments for Sir *Richard* and my Lady, with great Conveniences: And the whole Plan is cloſed with a decent Chappel in one End, and a handſome Library in the other: The Offices are below, equal to the Court, and *Mezanins* above. The ſecond is the Front, adorned with a juſt Hexaſtyle, the firſt yet practiſed in this manner in the Kingdom: The Order is *Corinthian*, and the Diameter 3 Foot, with its proper Entablature and Balluſtrade, adorned with Figures, and a *Cupola*. The third is the Section, and the fifth a Green-Houſe, but deſign'd by another Hand.

A new Deſign inſcrib'd to the Earl of Hallifax, p. 28, 29, 30.

AS this Noble Lord is the diſtinguiſhed Patron of the Muſes, the great *Mæcenas* of our Age, I have preſumed to honour this Deſign with the Patronage of ſo great a Name, as a ſmall Evidence of my Gratitude, who have been honoured very early with his Lordſhip's Countenance, by encouraging my Labours. Of this I have made two Plates; the firſt is the Plan of the principal Story, extending 300 Foot, and 150 deep, raiſed from the Court by 6 Steps, which leads into a noble Hall, Tribune and Salon, with double Apartments of State to the Gardens: The ſame Apartments are repeated to the great Court; and the whole Plan is cloſed with a large Gallery in one End, and a Chappel, Library, and great Stair-Caſe in the other: What is of Diſtinction in this Diſpoſition, is, that the Bed-chambers are removed from interrupting the grand Viſto, and ſtill the State is preſerved in entering them when neceſſary; which I have not yet obſerved in any former Deſign. The ſecond is the Front where a large Ruſtick ſupports a Loggia with 4 Columns of the *Corinthian* Order: Here the Windows are placed at due Diſtance, and free from that bad Effect we ſo frequently ſee when they are crowded, which deſtroys that Repoſe and Appearance of Strength, ſo neceſſary in Architecture. Done *Anno 1715.*

Burlington Houſe in Pickadilly, with the Duke of Kent's Pavilion, p. 31, 32, 33.

THE firſt Plate contains the two Plans of the following Fronts: The ſecond is the Front of *Burlington Houſe*: The third is the ſaid Pavilion in his Grace's Gardens in *Bedfordſhire*. Deſign'd by Mr. *Archer*, *Anno 1709.*

Montague Houſe, London, p. 34, 35, 36.

THIS great Houſe was built by the late Duke of *Montague*, in the *French* manner; the Apartments are very noble, and richly adorned. Here *Monſieur La Fauſſe*, Mr. *Rouſſeau*, and Mr. *Baptiſt*, have expreſs'd the Excellence of their Art. The Architecture was conducted by *Monſieur Pouget*, 1678.

Drumlenrig

Drumlenrig Castle in Scotland, p. 37, 38.

IS the ancient Seat of his Grace the Duke of *Queenbury*, in the Shire of *Dumfries*: It was greatly adorned by the two preceding Dukes, with noble Gardens, and many other expenfive Decorations.

Marlborough Houfe, St. James's, p. 39, 40.

IS the Refidence of his Grace in *London*; where are fine Gardens, and Prospect over St. James's Park. The Design was given by Mr. *Wren*, Anno 1709.

Powis's Houfe, London, p. 41, 42.

THIS Houfe is built with the beft *Portland* Stone, well executed; enriched with a *Corinthian* Pilaſtrade, beſides a conſiderable Attick and Baluſtrade, ſupported with a ruſtick Baſement; and was finiſh'd Anno 1714.

Buckingham Houfe, p. 43, 44.

THIS is the Seat of his Grace the Duke of *Buckingham*, in a moſt admirable Situation, having the nobleſt Avenue in *Europe*, the Mall, and commands an entire Proſpect over St. James's Park. I have made two Plates: The firſt is the general Plan, where the Apartments are extremely noble, richly furniſhed; here is a great Stair-Caſe, auguſt and lofty; here is a curious Collection of the beſt Painting, an admirable Piece of Statuary of *Cain* and *Abel*, by the famous *Jean de Boulogne*, with many other Rarities of great Value. In the ſecond is the Front, adorned with a Pilaſtrade of a *Corinthian* Tetraſtyle. The whole was conducted by the learned and ingenious Capt. *Wynne*, Anno 1705.

Stoke, in the County of Hereford, p. 45, 46.

IS the Seat of Mr. Auditor *Foley*, deſign'd and built by himſelf, attended with fine Gardens. Here Mr. *Thornhill* has expreſs'd his excellent Genius in Painting the Ceiling of the great Hall, and many other noble Decorations. Anno 1710.

Kings-Weſton, in Glouceſterſhire, p. 47, 48.

IS the Seat of the Right Honourable *Edward Southwell*, Eſq; who is the *Angaranno* of our Age, to whom my Obligations are ſo deep, that to repeat the leaſt Part of them, would offend the Modesty of my Benefactor. I have made two Plates: The firſt contains the Plans of the firſt and ſecond Floor; the Apartments of State are raiſed from the great Court by 12 Steps, which lead into a very lofty and ſpacious Hall, that riſeth the full Height of both Stories; from this you enter into the Apartments of State, very handſome and commodious; above is the Lodging-Story, with an Attick for the reſt of the Family: The ſecond Plate is the Front, adorned with an Hexaſtyle of a *Corinthian* Pilaſtrade; the Architecture is great, and Maſculine; the Windows at proper Diſtance; and the whole Deſign ſufficiently demonſtrates the great Genius of the Architect, which was given by Sir *John Vanbrugh*, and finiſhed Anno 1713.

Lindſey Houſe in *Lincolns-Inn Fields*, London, p. 49, 50.

BElongs to the Right Honourable the Marquis of *Lindſey*, Lord Great Chamberlain of *England*, and is another Piece of *Inigo Jones*. I have made two Plates: In the firſt are the Plans of the firſt and ſecond Stories, which contain as much State and Convenience as can be expected in a Line of 62 Foot: The ſecond is the Front, which has a cod ruſtick Baſement; from which riſeth a regular *Ionick* Pilaſtrade, including the principal, and an Attick Story: The Windows are well

proportion'd, gracefully drefſ'd, without Affectation. The Fabrick is cover'd with a handſome Baluſtrade; and, in a word, the whole is conducted with that Harmony that ſhines in all the Productions of this great Maſter, who deſign'd it Anno 1640.

Willbery in *Wiltſhire*, p. 51, 52.

IS the Seat of *William Benſon*, Eſq; invented and built by himſelf in the Style of *Inigo Jones*, who, by this excellent Choice, diſcovers the Politeneſs of his Taſte: And as he is Maſter of the moſt refined Parts of Literature, has here expreſs'd a particular Regard to the nobleſt Manner of Architecture in this beautiful and regular Deſign, which was executed Anno 1710.

A new Deſign for the Earl of *Illy*, p. 53, 54.

AS this Noble Lord is Brother to his Grace the Duke of *Argyle*, who poſſeſſeth all the great Qualities of the Family, adorned with the brighteſt Endowments of Nature and Acquiſition, I have preſumed to ſcreen this Deſign with his Lordſhip's Name. Here are two Plates: The firſt contains the two Plans, in a Square of 76 Foot; the principal Story is raiſed from the Court by 6 Steps, which leads unto the great Hall 30 in Front, 40 deep, and 30 Foot high; behind this Hall is the Salon 30 by 24 Foot, attended with double Apartments of State; the Salon is 20 Foot high, and the reſt 18; here are no Bed-Chambers, this entire Floor being devoted to State: In the next Floor are two double Apartments, viz. Anti-Chamber, Bed-Chamber, &c. with a large Library over the Salon; above the other Apartments are *Mezzanins*, for accommodating the Family, illuminated from the Leads. The ſecond Plate contains the Front, which has a large Ruſtick that ſupports a regular *Ionick* Colonnade of 1 Columns, though expreſs'd in the Plan as Pilaſters: Here I have omitted to continue the Ruſticks, to entertain the Eye with ſome Repoſe; the Windows are proportion'd and drefſ'd in the *Palladian* Style. Anno 1715.

Blenheim, from p. 55, to p. 62, incluſive.

THIS Noble Fabrick is the Seat of his Grace the Duke of *Marlborough*, in *Oxfordſhire*. In this Collection I preſent the Curious with all the Plans and Elevations, by the particular Direction of Sir *John Vanbrugh*, who gave the Deſigns of this Magnificent Palace. Here I am at a Loſs, how to expreſs my Obligations to this worthy Gentleman for promoting my Labours, in moſt generously aſſiſting me with his Original Drawings, and moſt carefully correcting all the Plates as they advanced. All I can ſay, falls infinitely ſhort of what I owe; and yet am afraid, what is already ſaid is much more than he will approve. The Manner is Grand, the Parts Noble, and the Air Maſtiff of this Palace, adapted to the Martial Genius of the Patron. The firſt Plate contains the Ground-Story, or Vaults: The ſecond the Principal, or Floor of State; where the Reader may, with great Eaſe, enter into a full Detail of the Whole by the Scale: The third is the general Front as you enter, making a Line of 490 Foot: The fourth is the Garden-Front: The fifth is the Elevation of one End; the other being anſwerable to it: The laſt is the general Plan. Here are noble Gardens; a ſtately Bridge, with an Arch 100 Foot in Diameter; with many other excellent Embelliſhments: But above all, the intended Paintings by Mr. *Thornhill*, the Modern *Apelles*, whoſe bright Pencil is only capable to tranſmit to Poſterity the Glory of the *Briffſ* Arms, whereof the Models are already made. It was built Anno 1715.

Caſtle Howard, from p. 63, to p. 71, incluſive.

IS the Noble Seat of the Right Honourable the Earl of *Carlisle*, in *Yorkſhire*: The Plans, Elevations, and Sections, are all drawn from the Originals of the Architect,

rest. Sir *John Vanbrugh*, and by him most carefully revised. The first Plate is the general Plan, making a Line of 660 Foot, wherein all the Offices are express'd. The second is the Plan of the principal Floor, the Portico, Great Hall, and Salon, are extream Magnificent, richly adorn'd with Sculpture; the Painting by Signor *Pilligrini*; in the *Dome* is express'd the Fall of *Phaeton*: The Apartments of State are very Noble, fronting the Gardens, with a Line of 300-Foot; the rest is suited to Convenience. The third Plate is the general Front. The fourth is the Front to the great Court. The fifth is the Garden Front; and the last is the Section. Here are excellent Gardens, Parks of great Extent, lofty Obelisks. And in fine, this Seat is truly worthy of so great and so liberal a Patron, which was built *Anno 1714*.

Chatworth, from p. 72, to p. 76, inclusive.

IS the magnificent Palace of his Grace the Duke of *Devonshire*, in *Derbyshire*; which, for the Quality of Materials, Neatness of Execution, rich Furniture, and all proper Decorations, is second to none in the Kingdom, and perhaps in *Europe*. I have given three Plans, and two Elevations: The first is the Plan of the Offices, with a spacious Court, adorned with two noble Arcades: Here is a Chapel, great Hall, and Stair-Case, extreme Magnificent. The second is the Plan of his Grace's proper Apartment, very rich, where State is joined with great Convenience; here is a noble Gallery, a Library, with a Collection of the most valuable Authors, and many excellent Original Paintings of the most celebrated Masters. The third is the Plan of the principal Floor; containing the Apartments of State, which, indeed, are extreme Noble. The fourth is the West Front, a very rich Piece of Architecture; the Terrais is dress'd with Frost-Work; from which is raised a large rustick Basement, that supports an *Ionick* Order; and in the Middle a beautiful Tetrastyle, covered with an enriched Pediment: The whole Front is dress'd with excellent Sculpture, and finished with a regular Balustrade, adorned with Vases of an exquisite Choice. The last Plate is the South Front, which is very fine, but not so rich as the former. The whole is performed in the best Stone, deserving of the best of Patrons; and is the Invention of Mr. *Talman*, *Anno 1681*.

Mr. Johnston's House at Twickenham, p. 77.

THIS is the Seat of the Right Honourable *James Johnston*, Esq; which is regular, and commodious. The principal Floor is raised by 8 Steps from the Court, where you find a very handsome Hall that leads into the great Apartments. Here is an admirable Prospect of the most charming Part of the *Thames*, where the Eye is entertain'd with a Thousand Beauties, not to be conceived but from this Situation. The Gardens are extreme curious, the Plantations most artfully disposed; and every thing contributes to express the refined Taste, and great Politeness of the Master. Designed by Mr. *James*, 1710.

Sir Walter Yonge's House, p. 78, 79.

THIS is the Seat of Sir *Walter Yonge*, Bar. in *Devonshire*. I have made two Plates: The first contains the two Plans of the first and second Story; in the first is the Floor of State, raised from the Court by 12 Steps, where you find very handsome Apartments well furnished. In the second Story is the Chamber Floor, with proper Conveniences. The second Plate is the Front, which was executed *Anno 1690*.

Mr. Cary's House at Rowhampton, p. 80, 81.

THIS is the Seat of *Thomas Cary*, Esq; in *Surrey*; in a most agreeable Situation: The Apartments are well disposed for State and Convenience. The Salon is very Noble, and has an excellent Ciel-

ing, by Mr. *Thornhill*. But above all, the Humanity and Liberality of the Master deserves to be transmitted to Posterity. The Design was given by Mr. *Archer*, *Anno 1710*.

Greenwich Hospital, from p. 82, to p. 89, inclusive.

THIS Royal Hospital was at first intended by King *Charles II*, for a Royal Palace; but was given by King *William* and Queen *Mary* for the Relief of decay'd and disabled Seamen, who had spent their Blood and Strength in the Naval Service. It is situated on the Bank of the *Thames*, 4 Miles below the Bridge of *London*, and is for Magnificence, Extent, and Convenience, the first Hospital in the World. I have given four large Plates: The first is the general Plan of this stupendous Structure, which contains the State-Apartments, with great variety of Accommodation: The second is the general Front, that commands a charming Prospect of the River and adjacent Country: The third is a double Pavilion at large, which makes a Part of the preceding Front: And the last is the Return of the same Pavilion, flanking the first great Court as you ascend from the Water. The Style of Architecture is Great and Noble, executed by Mr. *Webb*, from a Design of his great Master *Inigo Jones*. Some are of Opinion, that the Attick over the great *Corinthian* Order is too high by the great Plinth, being just so much more than One third of the Column, which, probably, was changed from the Original Drawing. In the best Remains of Antiquity, we find great Variety in their Proportions: In the *Triumphal Arch* of *Titus*, the Attick has a full Third of the entire Ordinance; in that at *Benevento* near the same; at *Ancona* a fourth; in that of *Constantine* the Attick has 4. o. Parts of the Column; that of *Severus* is precisely one Third: I shall leave it to better Judges to determine the Preference. But to return to the present Subject: Here the Rusticks are introduced with so much Art, the Ornaments with so much Grace, the whole Disposition is so Noble and Lofly, that, in the Opinion of many, it's one of the best Lines of Building in the World. There is so much to be said on this copious Subject, that, indeed, it requires an entire Volume; and possibly I may, one Day, entertain the Publick with it. But here I can't neglect mentioning that excellent Ceiling in the great Hall, by Mr. *Thornhill*, to his eternal Honour, and his Country: Here Foreigners may view with Amaze, our Countrymen with Pleasure, and all with Admiration, the Beauty, the Force, the Majesty of a *British* Pencil! rich in Invention, correct in Design, noble in Disposition, in Execution admirable. 1715.

Thorsby House, p. 90, 91.

IS the Seat of the Right Honourable the Marquis of *Dorchester*, in *Nottinghamshire*. I have made two Plates: The first is a Plan, which entertains you with a noble Hall, a fine Chappel, a large Court, Apartments of State, and all other Conveniences: The second is the Front, extreme rich; performed by the same Hand that afterwards built *Chatworth*. Here are beautiful Gardens; and all is worthy of so noble and great a Patron. It was built *Anno 1671*.

Stainborough, p. 92, 93, 94.

THIS is the magnificent Seat of the Right Honourable the Earl of *Strafford*, &c. in *Torkshire*. Of which I have made two Plates: In the first are the Plans of the first and second Stories; the first is raised above the great Court by 12 Steps, which leads into a spacious Hall, and very large Apartments of State and Convenience: The second Plan presents you with a noble Gallery, that takes up the entire Front in a Line of 180 Foot, and has the Height of the Principal and Attick Story; here the noble Patron is preparing a curious Collection of Painting, Sculpture, and other excellent

excellent Decorations. The second Plate is the Front of this sumptuous Fabrick, raised with a large Basement, where the Coins are bound with Rusticks, which support a rich *Corinthian* Pilastrade, that carries the Principal and Attick Story; the Order has a regular Entablature, a handsome Balustrade, adorned with Figures and Vases; the Windows are richly dress'd: The whole Architecture is after the *Venetian* Manner, performed in Stone; and all is agreeable to the Politeness, Quality, and Distinction of the Patron. Anno 1715.

A new Design for the Lord Percival, p. 95, 96, 97.

I Have inscrib'd this Design of my Invention to this Noble Lord, who has universally encouraged all Arts and Sciences, and that of Architecture in a most particular manner. Here are two Plates: The first is the general Plan; the two covered Arches that join the Offices to the Houle, are disposed to receive Coaches, for Conveniency in wet Weather; the chief Floor is above, having a noble Salon in Front, and two fine Apartments behind. The second is the general Front, making a Line of 245 Foot; the Body of the Houle contains 120, which I have dress'd with the two most ancient Orders, the *Doric* and *Ionick*, in a double Hexastyle; the first has 2 in Diameter, the second has 2 Foot; the first advanceth $\frac{1}{2}$ from the Wall, and

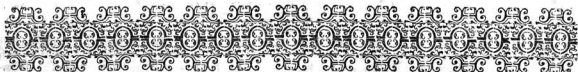
has but 8 Diameters in Height, which I thought the best Proportion to support the Superiour Order, to which I give 9. The Arcade is equal to one half of the Hexastyle; the Pavilion extends 36, and has 30 in Height, including the Balustrade. I have left out all manner of Rusticks and other Ornaments generally practised, purely to shew the Harmony of Proportion in the greatest Simplicity. 1715.

The Lord Leimpster's Houle, p. 98, 99, 100.

THIS is the Seat of the Lord Leimpster, in *Nor-thamptonshire*. Of which I have made two Plates: The first is the general Plan, including all the Offices, great Court, and Plan of the principal Floor; where are very noble Apartments, with great Conveniency. The second is the general Front, with a rustick Basement, which supports a *Corinthian* Pilastrade that carries two Stories: The Fabrick is finished with an Attick, and all is performed in very good Stone; and is the ingenious Invention of Mr. *Hauksmore*, to whom I am indebted for the Original Drawings of this Houle, and many other valuable Pieces, for enriching this Work, which I could not in Gratitude conceal from the Publick: The Building was finish'd Anno 1713; with which I conclude this First Volume.

A LIST of what is contain'd in the First Volume.

Numbr.	Plans.	Fronts.	Numbr.	Plans.	Fronts.
1	The Title Page		47	Plan of <i>Kings-Weſton</i> in <i>Gloceſterſhire</i>	I
2	The Dedication		48	Front ditto	I
3	Plan of <i>St. Paul's Church, London</i>		49	Plan Marq. of <i>Lindſey's, Lincoln's-Inn-Fields</i>	I
4	Front ditto		50	Front ditto	I
5	Plan of <i>S. Peter's at Rome</i>		51	Plan of <i>Mr. Benſon's Houle, at Wilberry</i>	I
6	Front ditto		52	Front ditto	I
7	Section ditto		53	Plan, a new Design for the Earl of <i>Iſlay</i>	I
8	Plan of a new Church of my Invention		54	Front ditto	I
9	Front ditto		55	Ground Plan of <i>Blenheim</i>	I
10	Plan of <i>Birmingham Church</i>		56	Plan of the principal Floor, ditto	I
11	Front ditto		58	Front to the Court double, ditto	2
12	Plan and Section of the <i>Banquetting-houſe</i>		60	Front to the Garden double, ditto	2
13	Front ditto		61	East Front ditto	I
14	Plans of <i>Greenwich-houſe</i>		62	General Plan of <i>Blenheim</i>	I
15	Front ditto		63	General Plan of <i>Caſtle Howard</i>	I
16	Front of <i>Somerſet-houſe</i> to the River		64	Plan of the principal Floor, ditto	I
17	Plans of <i>Gunnery-houſe</i> , near <i>Brentford</i>		66	General Front double, ditto	2
18	Front ditto		68	Court Front double, ditto	2
19	Plans of my Invention for the D. of <i>Argyle</i>		70	Garden Front double, ditto	2
20	Front ditto		71	Section ditto	I
21	Plan of the first Design for Sir <i>Rich. Child</i>		72	First Plan of <i>Chatsworth</i>	I
22	Front ditto		73	Second Plan, ditto	I
23	Plan of the second Design, ditto		74	Third Plan, ditto	I
25	Double Front ditto		75	West Front, ditto	I
26	Section ditto		76	South Front, ditto	I
27	<i>Green-houſe</i> , ditto		77	Mr. <i>Jobuſſon's Houle</i> at <i>Twickenham</i>	I
28	Plan of a new Design for the E. of <i>Haliſfax</i>		78	Plans of Sir <i>Walter Young's Houle</i> , in <i>Devon</i>	I
30	Double Front ditto		79	Front ditto	I
31	Plan of <i>Burlington-houſe</i> , and Duke of <i>Kent's Pavilion</i>		80	Plan of Mr. <i>Cary's Houle</i> , at <i>Rowhampton</i>	I
32	Front of <i>Burlington-houſe</i>		81	Front ditto	I
33	Front Duke of <i>Kent's Pavilion</i>		82	General Plan of <i>Greenwich Hoſpital</i>	2
34	Plan <i>Montague-houſe</i>		85	General Front to the River, ditto	2
35	Front to the Street, ditto		87	Double Pavilion to the River, ditto	2
36	Front to the Court, ditto		89	Plan of the ſaid Pavilion, ditto	2
37	Plan Duke of <i>Queensbury's Houſe</i>		90	Plan <i>Thorby</i> , the Seat of Marq. <i>Dorcheſter</i>	I
38	Front ditto		91	Front, ditto	I
39	Plan of <i>Marlborough-houſe</i> , <i>St. James's</i>		92	Plan of the Earl of <i>Strafford's</i> , in <i>Yorkſhire</i>	I
40	Front ditto		94	Front, ditto	2
41	Plan of the Duke of <i>Powis's Houſe</i>		95	Plan, a new Design for the Lord <i>Percival</i>	I
42	Front ditto		96	{ Front, ditto	2
43	Plan Duke of <i>Buckingham's Houſe</i>		97		
44	Front ditto		98	Plan of the Lord <i>Leimpſter's Houle</i>	I
45	Plan of Mr. Auditor <i>Foley's Houſe</i>		99	{ Double Front, ditto	2
46	Front ditto		100		
22 24			21 23		
			Total of Fronts		
			Total of Plans		
			57		
			43		



GEORGE R.



HEREAS Our Trusty and Well-beloved *COLEN CAMPBELL*, Esq; Author of the Work, *John Nicholson*, *Andrew Bell*, *William Taylor*, *Henry Clements*, Bookfellers, and *Joseph Smith*, Mapfeller, of our City of *London*, have humbly represented to Us, That they have, with great Labour and Expence, prepared for the Press a Book, Entitled, *Vitruvius Britannicus*, or the *British Architect*; containing the exact Plans, Elevations, and Sections of the Regular Buildings, both Publick and Private, in *Great Britain*; with variety of New Designs. In Two Volumes. And have, therefore, humbly besought Us, to grant them our Royal Privilege and License for the sole Printing and Publishing thereof, for the Term of Fourteen Years. We being willing to give all due Encouragement to Works of this Nature, are graciously pleased to condescend to their Request: And We do, therefore, by these Presents, grant unto them, the said *Colen Campbell*, *John Nicholson*, *Andrew Bell*, *William Taylor*, *Henry Clements*, and *Joseph Smith*, their Executors, Administrators, and Assigns, Our Royal License for the sole Printing and Publishing the aforesaid Book, Entitled, *Vitruvius Britannicus*, or the *British Architect*, for the Term of Fourteen Years from the Date hereof: Strictly forbidding all Our Subjects within Our Kingdom, and Dominions, to reprint the same, either in the like, or in any other Volume or Volumes whatsoever; or to import, buy, vend, utter, or distribute any Copies thereof, reprinted beyond the Seas during the Term of Fourteen Years, without the Consent or Approbation of the said *Colen Campbell*, *John Nicholson*, *Andrew Bell*, *William Taylor*, *Henry Clements*, and *Joseph Smith*, their Heirs, Executors, and Assigns, under their Hands and Seals first had and obtain'd, as they will answer the contrary at their Peril: Whereof the Commissioners, and other Officers of our Customs, the Master, Wardens, and Company of *Stationers* are to take Notice, that the same may be entred in the Register of the said Company; and that due Obedience be rendred thereunto.

*Given at Our Court at St. James's, the Eighth Day of April, 1715,
in the First Year of Our Reign.*


By His MAJESTY'S Command,

Ja. Stanbope.

N. B. In the Second Volume, what remains of *INIGO JONES* will be most carefully collected over the Kingdom, with the incomparable Designs he gave for *WHITE-HALL*; all taken from the invaluable Original Drawings of that Great Master; with the other most Regular Edifices.

A

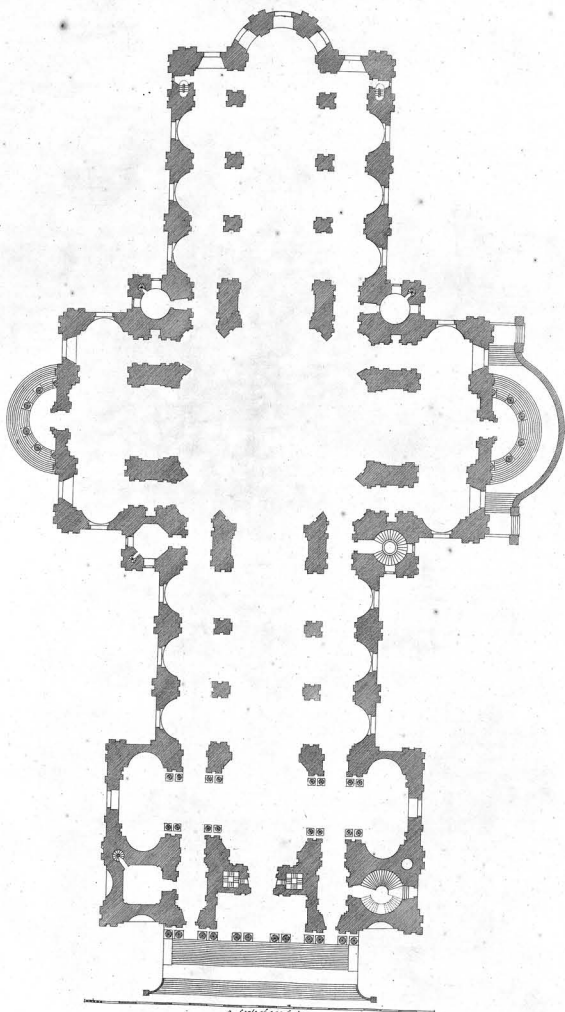
A LIST of those who have already subscribed before the 25th of March, 1715.

A.		S.		S.		S.	
	DUKE of Argyle, Groom	2	The Hon. Coll. John Campbell, Esq;	1	Alexander Gordon of Pitburg, Esq;	1	S.
	of the Stole to his Royal						
	Highness the Prince				Alexander Grant, Esq; Brigadier General	1	
	The Marquis of Anandale	2			Francis Gynna, Esq;	1	
	Earl of Albemarle	2			William Le Grand, Esq;	1	
	Earl of Arden	1			Richard Golph, Esq;	1	
	The Lord Albemarle	1			Sir Samuel Garib, M. D.	1	
	Sir John Anstruther, Bar.	1			Robert Gray, M. D.	1	
	Sir Jacob Astley, Bar.	1			Mr. The Granger of the East-India House	1	
	Sir Robert Ayscough, Bart.	1			Mr. Andrew Golph	1	
	John Aribbush, M. D.	2					
	David Anderson, S. T. D.	1					
	James Anderson, D. V. M.	1					
	James Anderson, Gent. Waiter to the	1					
	Signet in Edinburgh	1					
	The Honourable John Aspland, Esq;	1					
	Thomas Archer, Esq;	1					
	Francis Assheton, Esq;	1					
	Alexander Abercrombie, Esq;	1					
	Mr. James Ayres	1					
	Mr. Francis Arderton	1					
B.			S.		H.		
	DUKE of Beaufort	2			Duchess of Hamilton and Brandon	2	
	Duke of Buckingham	2			Earl of Halifax, first Lord Com-	2	
	Duke of Bolton	2			missioner of the Treasury		
	Duchess of Buccleugh	2			Earl of Hopton	1	
	Earl of Bridgewater, Lord Chamberlain	2			Earl of Haddington	1	
	to her Royal Highness				Lord Harley	1	
	Earl of Broadalbin	2			Lord Harcourt	1	
	Earl of Buchan	1			Sir Thomas Hauser, Bar.	1	
	Earl of Burn	1			Sir Roger Hill, Bar.	1	
	Lord Viscount Balingrope	1			Sir J. H. Hodge, Esq;	1	
	Lord Balmorloch	1			Sir David Hamilton, Knt.	1	
	Lord Bruce	1			John Henley of Bristol, Esq;	1	
	Lord Bathurst	1			Richard Hill of Richmond, Esq;	1	
	Lord Berkeley of Stratton	1			William Herbert, Esq;	1	
	Lord Bingley	1			William Hotwold, Esq;	1	
	Sir Julius Beck, Bar.	1			John Huggins, Esq;	1	
	Sir Jacob Bank, Knt.	1			Nicholas Hainsford, Esq; Clerk of His	1	
	Sir James Bateman	1			Majesty's Works		
	The Honourable George Baily, Esq;	1			Mr. John Hare	1	
	Commissioner of the Admiralty	1			Mr. Thomas Hinton	1	
	The Right Hon. William Brouncker, Esq;	1			Mr. Robert Hynd	1	
	The Right Hon. William Blackway, Esq;	1					
	William Bunton, Esq;	1					
	J. Borington Shaw, Esq;	1					
	John Boulton, Esq;	1					
	Nathaniel Blackerby, Esq;	1					
	William Barner, Esq;	1					
	John Baker, Esq; Printer to the King's	1					
	most Excellent Majesty						
	Mr. Richard Brown	1					
	Mr. James Bateman	1					
	Mr. James Blackie, Joiner	1					
	Mr. Francis Bird, Statuary	1					
C.			E.		K.		
	William Lord Camper, Lord High	2			DUKE of Kent	2	
	Chancellor of Great Britain				Earl of Kinnel	2	
	Earl of Carlisle	2			Lord Viscount Kilfly	1	
	Earl of Carnarvon	2			Lord Chief Justice King	1	
	Earl of Cornwallis, Treat. of the Household	2			Robert Keck, Esq;	1	
	Earl of Clare	2					
	Lord Craven	1					
	Lord Glerene	1					
	Lord Goring	1					
	Lord Conway	1					
	Lord Cairnes	1					
	The Lady Right	1					
	The Right Honourable Tho. Coke, Esq;	2					
	Vice-Chamberlain						
	Sir Archibald Campbell, Knt.	1					
	Sir Duncan Campbell, Bar.	1					
	Sir Hugh Campbell of Calder, Bar.	1					
	Sir James Campbell of Ardninglass, Bar.	1					
	Sir James Campbell of Ashinbrake, Bar.	1					
	Sir James Campbell of Abernethy, Bar.	1					
	The Honourable John Campbell, Esq;	1					
	The Hon. Coll. James Campbell, Esq;	1					
D.			F.		L.		
	The Hon. Coll. John Campbell, Esq;	1			DUKE of Leeds	2	
	Gentleman of the Bed-Chamber to	1			Marquis of Lindsey, Lord Great	2	
	his Royal Highness				Chamberlain of England		
	Archibald Campbell, Esq;	1			Earl of Loudoun	2	
	Daniel Campbell, Esq;	1			Lord Lanfdown	1	
	Duncan Campbell, Esq;	1			Lord Leimpher	1	
	Capt. Matthew Campbell, Esq;	1			Lord Longdale	1	
	Bailly John Campbell of Edinburgh, Esq;	1			Lord Balfour of London	1	
	Calen Campbell, Esq;	1			Nicholas Leichner, Esq; Solicit. General	1	
	Sir Richard Child, Bar.	3			Samuel Lynn, Esq;	1	
	Sir James Carmichael, Bar.	1			Benjamin Lacy, Esq;	1	
	Sir James Cuninghame, Bar.	1			Mr. Leclman, St. James's	1	
	Sir Thomas Copley, Bar.	1			Mr. John Leggat	1	
	Sir Robert Child, Knt.	1			Mr. William Law	1	
	Sir Alexander Cammin, Knt.	1					
	The Honourable George Clark, Esq;	1					
	George Lockhart of Carnarvon, Esq;	1					
	R. Criswell, Esq;	1					
	George Culverth, Esq;	1					
	Thomas Cury, Esq;	1					
	Henry Cuninghame, Esq;	1					
	Mr. Cranenburgh, late Resident for His	1					
	Majesty						
	Mr. Chenevay	1					
	Mr. John Churchill, Master Carpenter	1					
	to His Majesty						
	John Corbet, LL. D.	1					
D.			G.		M.		
	DUKE of Devonshire, Lord Steward	2			DUKE of Marlborough, Captain Ge-	2	
	Duke of Devonshire	2			neral of all His Majesty's Forces		
	Marquis of Dorchester	2			D		
	Earl of Dorset	2					
	Earl of Dunbligh	2					
	Earl of Dysart	2					
	Sir David Dunsy, Bar.	1					
	The Honourable George Dodington, Esq;	1					
	one of the Lords of the Admiralty	1					
	Montague Gerard Drake, Esq;	1					
	William Dalglish, Esq;	1					
	William Dun of Liverpool, Esq;	1					
	Archibald Douglas of Gowers, Esq;	1					
	Thomas Dunsford, D. D.	1					
	Capt. N. Dunlop	1					
	Mr. Dodd of Lincoln-Inn	6					
	Mr. William Dickinson	1					
	Mrs. Dalben	1					
E.			H.		N.		
	Right Hon. Lieut. General Earl	1					
	Sir John Evelyn	1					
	Sir Gilbert Elliot of Minto, Bar. one of	1					
	the Senators of the College of Justice						
	R. Edgcomb, Esq;	1					
F.			I.		O.		
	Earl of Findlater and Seafield	1					
	Lord Forster	1					
	Sir Robert Frowse, Bar.	1					
	Sir Thomas Frankland, Bar.	1					
	Richard Fuller, LL. D.	1					
	Mr. Auditor Foley	1					
	Thomas Frankland, Esq;	1					
	James Fory, Esq;	1					
	John Forbes of Colinton, Esq;	1					
	William Freeman, Esq;	1					
G.			J.		P.		
	DUKE of Grafton	2					
	The Earl of Galloway	2					
	His Excellency the Lord Baron Gort, &c.	1					
	Sir Richard Grosvenor, Bar.	1					
	Sir Robert Gordon, Bar.	1					
	Sir William Gordon, Bar.	1					
H.			K.		Q.		
	Alexander Gordon of Pitburg, Esq;	1					
	Alexander Grant, Esq; Brigadier General	1					
	Francis Gynna, Esq;	1					
	William Le Grand, Esq;	1					
	Richard Golph, Esq;	1					
	Sir Samuel Garib, M. D.	1					
	Robert Gray, M. D.	1					
	Mr. The Granger of the East-India House	1					
	Mr. Andrew Golph	1					
I.			L.		R.		
	Duchess of Hamilton and Brandon	2					
	Earl of Halifax, first Lord Com-	2					
	missioner of the Treasury						
	Earl of Hopton	1					
	Earl of Haddington	1					
	Lord Harley	1					
	Lord Harcourt	1					
	Sir Thomas Hauser, Bar.	1					
	Sir Roger Hill, Bar.	1					
	Sir J. H. Hodge, Esq;	1					
	Sir David Hamilton, Knt.	1					
	John Henley of Bristol, Esq;	1					
	Richard Hill of Richmond, Esq;	1					
	William Herbert, Esq;	1					
	William Hotwold, Esq;	1					
	John Huggins, Esq;	1					
	Nicholas Hainsford, Esq; Clerk of His	1					
	Majesty's Works						
	Mr. John Hare	1					
	Mr. Thomas Hinton	1					
	Mr. Robert Hynd	1					
J.			M.		S.		
	Earl of Jersey, Lord Register, and Ju-	2					
	stice General for North Britain						
	Sir Theodore Janfen, Knt. and Bar.	1					
	Sir Henry Jones, Bar.	1					
	Sir William Johnston, Bar.	1					
	The Right Hon. James Johnston, Esq;	1					
	Tobias Jankyn, Esq;	1					
	Thomas Jett, Esq;	1					
	Mr. John James of Greenwich	1					
	Mr. William Jones	1					
	Mr. Henry Jones of Woodstock	1					
	Mr. Edward Jones	1					
	Mr. William Jones, F. R. S.	1					
K.			N.		T.		
	DUKE of Kent	2					
	Earl of Kinnel	2					
	Lord Viscount Kilfly	1					
	Lord Chief Justice King	1					
	Robert Keck, Esq;	1					
L.			O.		V.		
	DUKE of Leeds	2					
	Marquis of Lindsey, Lord Great	2					
	Chamberlain of England						
	Earl of Loudoun	2					
	Lord Lanfdown	1					
	Lord Leimpher	1					
	Lord Longdale	1					
	Lord Balfour of London	1					
	Nicholas Leichner, Esq; Solicit. General	1					
	Samuel Lynn, Esq;	1					
	Benjamin Lacy, Esq;	1					
	Mr. Leclman, St. James's	1					
	Mr. John Leggat	1					
	Mr. William Law	1					
M.			P.		W.		
	DUKE of Marlborough, Captain Ge-	2					
	neral of all His Majesty's Forces						
	D						
	Duchess						

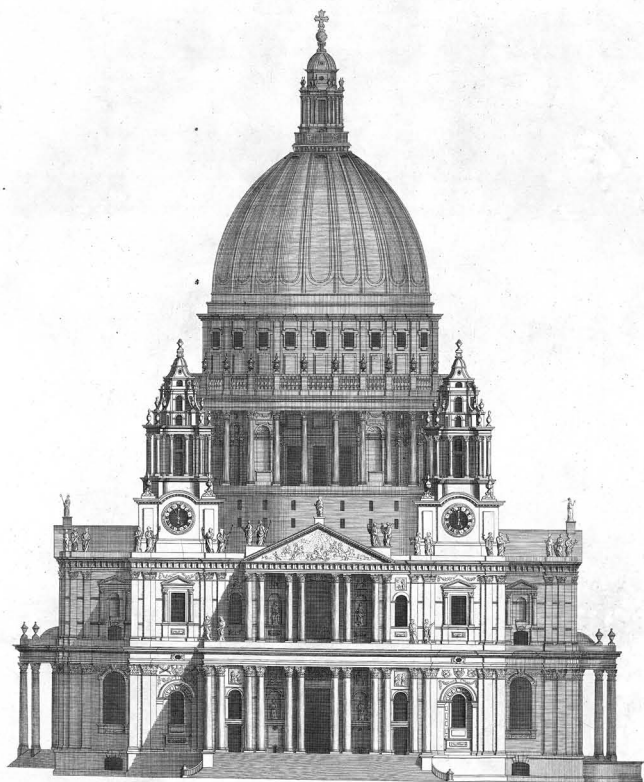
Duchess of Marlborough	2	Mr. John Price, Junr	1	Mr. Richard Sanders, Joiner	1
Duchess of Montague	2	Mr. Francis Price	1	John Starr, Engraver	1
Duchess of Montague	2	Mr. Alexander Pritchard, Mason	1		
Duke of Montrose, principal Secretary of State	2	Mr. Andrew Peters, Painter	1	T.	
Earl of Marshall	2	Mr. Bart. Peijoy of Oxen, Mason	1		
Earl of Marr	2			Marquis of Tweeddale	1
Lord Mansfield	1			Earl of Thanes	1
Lord Middleton	1			Lord Viscount Tounbend, Principal Secretary of State	1
Sir William Mansfield, Bar.	1	Duke of Queensbury	2	Lord Thomson	1
Sir Christopher Musgrave, Bar.	1			James Taylor, Esq;	1
Sir Nicolas Movic, Bar.	1			Cholmondeley Turner, Esq;	1
George Maddison, Esq;	1			John Talbot, Esq;	1
Abraham Moore, Esq;	1			William Tomlin, Esq;	1
Capt. Mansel	1			John Talman, Esq;	1
Doctor Adam, M. D.	1			Capt. Tynfel of Westminster	1
Doctor John Millsour, M. D.	1			Mr. James Thornhill, Painter	1
Mr. John Mann Moor	1				
Mr. Arthur Manley	1			V.	
Mr. George Montgomery	1			SIR John Vanbrugh, Knt. Comptrol-ler of His Majesty's Works	1
Mr. Isaac Mars	1			James Vernon, Esq;	1
				Mr. Vanshul	1
N.				W.	
Earl of Nottingham, Lord President of the Council	2			Marquis of Wharton, Lord Privy Seal	1
Cory Nevill, Esq;	1			Earl of Warwick	1
Edward Nicoll, Esq;	1			Earl of Weymss	1
				Lord Bishop of Winchester	1
O.				Sir Willm Wyndham, Bar.	1
Duke of Ormond	2			Sir John Walter, Bar.	1
Earl of Oxford, first Lord of the Admiralty	2			Sir Tho. Webster, Bar.	1
Earl of Orery	2			Sir Christopher Wren, Knt. Surveyor-General of His Majesty's Works	1
Earl of Orkney	2			The Honourable Robert Walpole, Esq;	1
Earl of Oxford	2			Paymaster General	1
				Christopher Wren, Esq;	1
P.				Thomas Wrench, Esq;	1
Duke of Pavia	2			Doctor Walslow, M.D.	1
Lord Palovitz	1			Mr. Sergeant Wynne	1
Lord Percival	1			Mr. Sam. Waters of the East-India House	1
Lord Chief Justice Parker	1			Mr. Robert Wood	1
Sir Robert Polack, Bar.	1			Mr. James Williams, Mason	1
William Pultney, Esq;	1				
Robert Pringle, Esq;	1			X;	
Blackwell Perkins, Esq;	1			SIR Walter Yonge, Bar;	1
John Pringle of Haining, Esq;	1				
Silvester Pelly of Bernard's Inn, Gent.	1				

NB. If any Subscribers are omitted in the above Catalogue, their Names shall be inserted in the Second Volume, and likewise all those who shall hereafter subscribe, before the Work is finish'd.





*a Scale of 100 feet—
The plan of St Pauls Church
from Dr. L. Eglishs de St Paul a Londres —*



Extends 240.
a Scale of 100 Feet

*The West Prospect of S^T PAULS CHURCH begun Anno 1672 and finish'd 1710. by
S^T Christopher Wren K^t.*

*Is most humbly Inscribed to the R^{ts} Rev^d Father in God JOHN Lord BISHOP of LONDON, Dean of all Her MAJESTYS Chapels, and one
of Her MAJESTYS most Honourable privy Council.*

Elevation Occidentale Del' EGLISE de S^T PAUL a LONDRE Commencée 1672 et achevée 1710 par Christophe Wren Chevalier.

Ca Campbell Delin

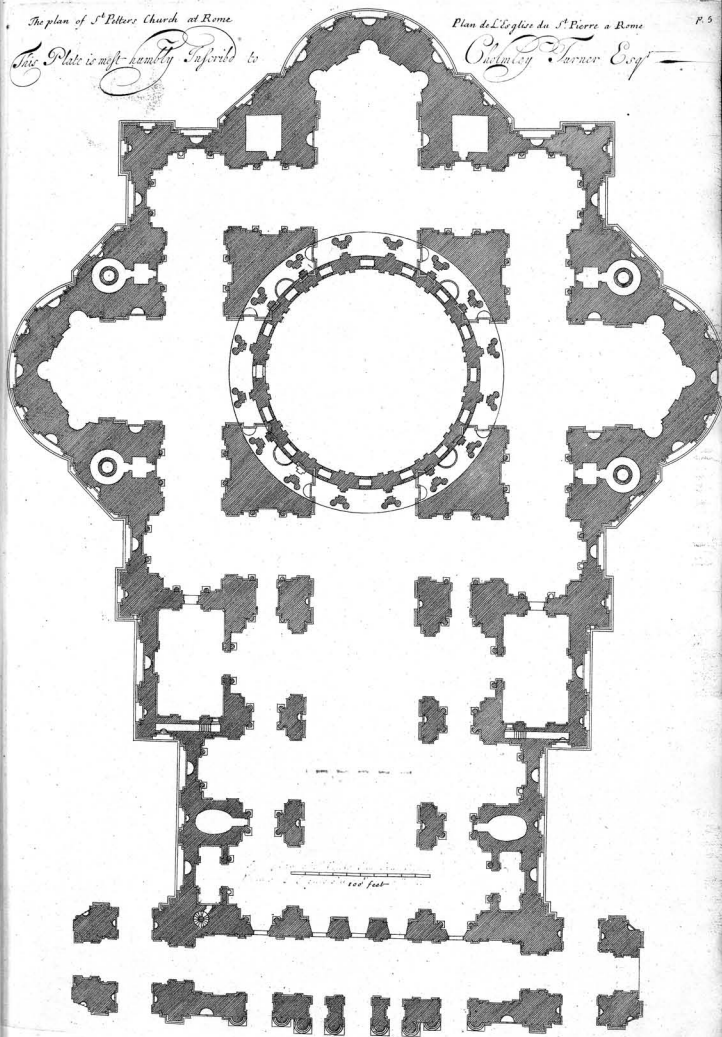
The plan of S^t Peter's Church at Rome

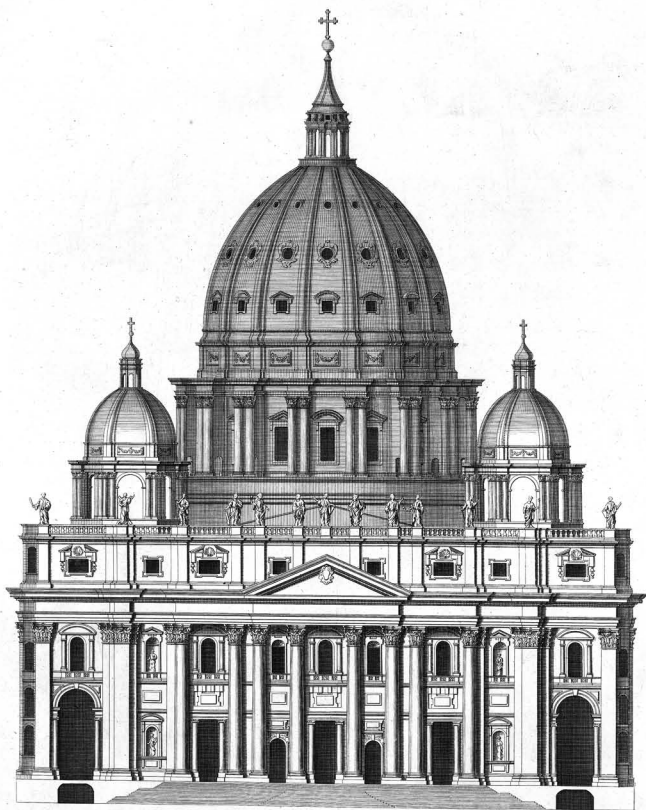
This Plate is most humbly Inscribed to

Plan de L'Eglise du S^t Pierre a Rome

P. 5

Joshua Turner Esq^r



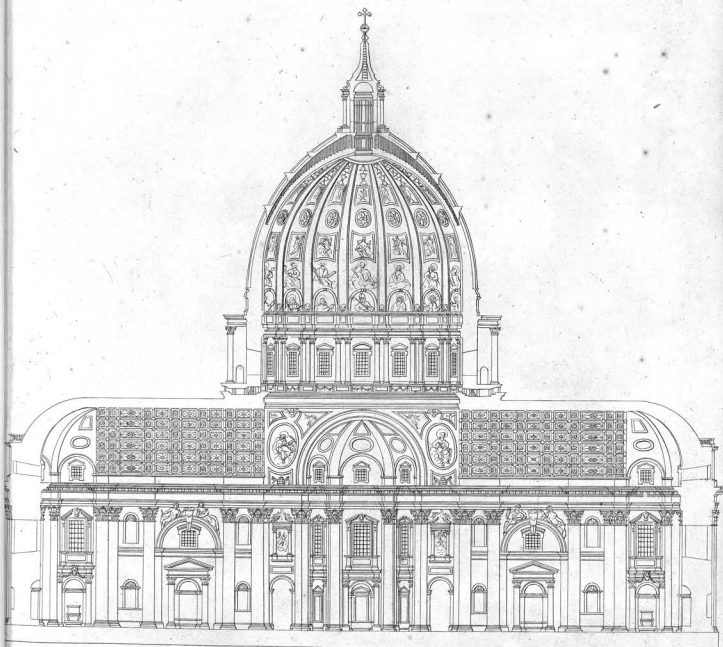


Extends 400.
a Scale of 200 Feet

The Elevation of ST. PETERS CHURCH at ROME Founded by CONSTANTIN the Great Anno 310. The present Fabrick was begun by POPE JULIUS the II conducted by BRAMANTE Anno 1513 to whom SANGALLO and the Famous MICHEL ANGELO BONAROTTI Succeeded. The Frontispiece and Body of the CHURCH was Erected by P. PAUL the V. under the direction of CARLO MADERNO 1633. and the Balustrade and other Ornaments were added by CAVALIER BERNINI 1640.

L'Eglise De ST. PIERRE. a ROME.

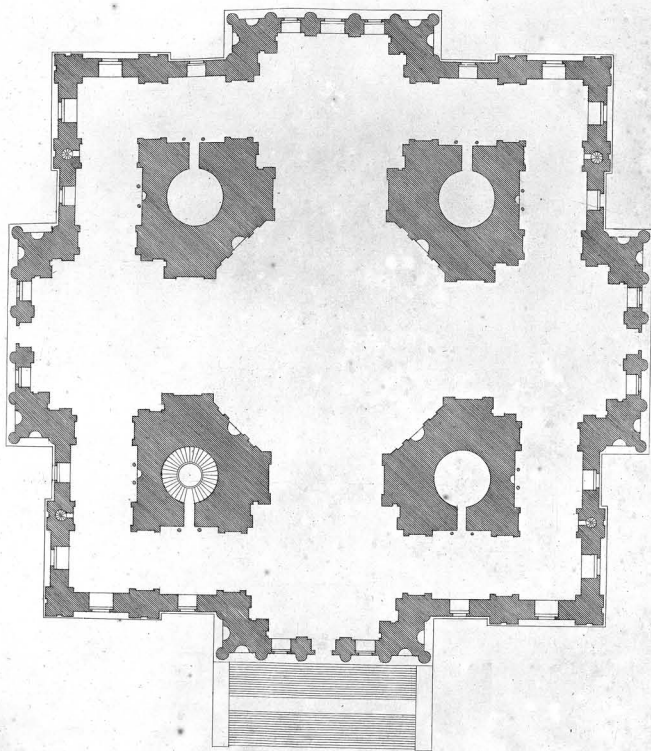
*This plate is most humbly inscrib'd to His Grace y^e Duke of Roxburgh sc^t.
Ca Campbell Delin:*



The Section of S^t Peters Church in Rome.

L. e Profil de l'Eglise du S^t Pierre à Rome.

This plate is most humbly inscrib'd to James Tayler Esq^r



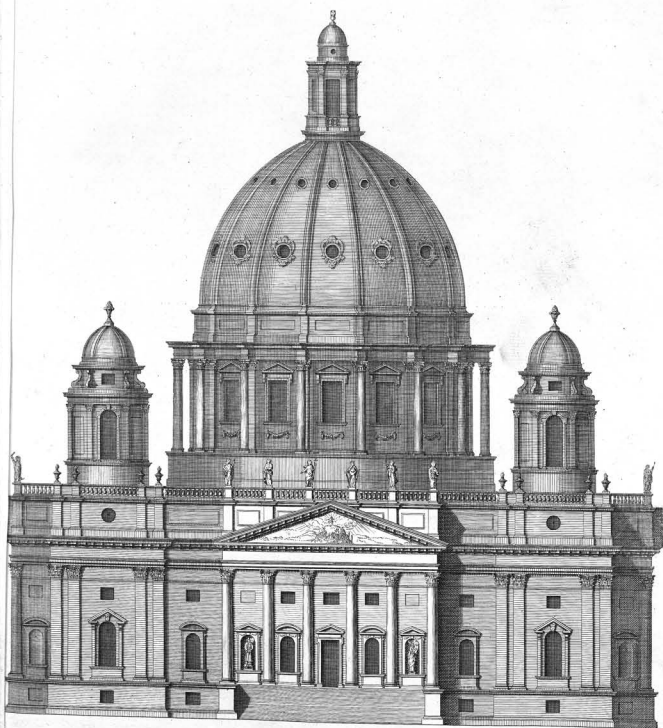
100 Feet

Extends 245

Plan of a new Design of a Church of my Invention for Lincoln's Inn Fields.

Plan D'un Nouveau Dessein de mon Invention pour une Eglise dans la place de Lincoln's Inn Fields a Londres.

This Plate is most humbly inscrib'd to S^r William Johnston of Westerhall Bar.

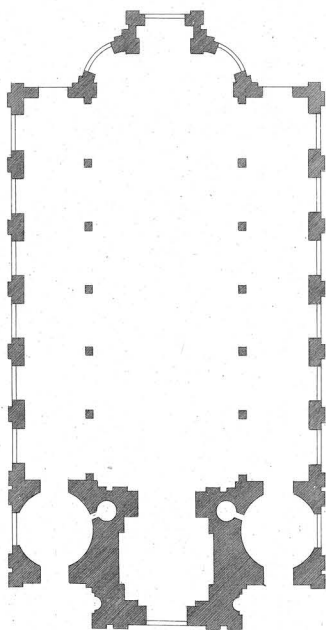


100 Feet  Extends 280.

*This new Design of my Invention for a Church in Lincoln's Fields, is most
humbly Incribed to the Rev.^d D^r Lancaster Vicar of S.^t Martins in the Fields
Arch Deacon of Middlesex, and Provoost of Queens Colledge Oxon.*

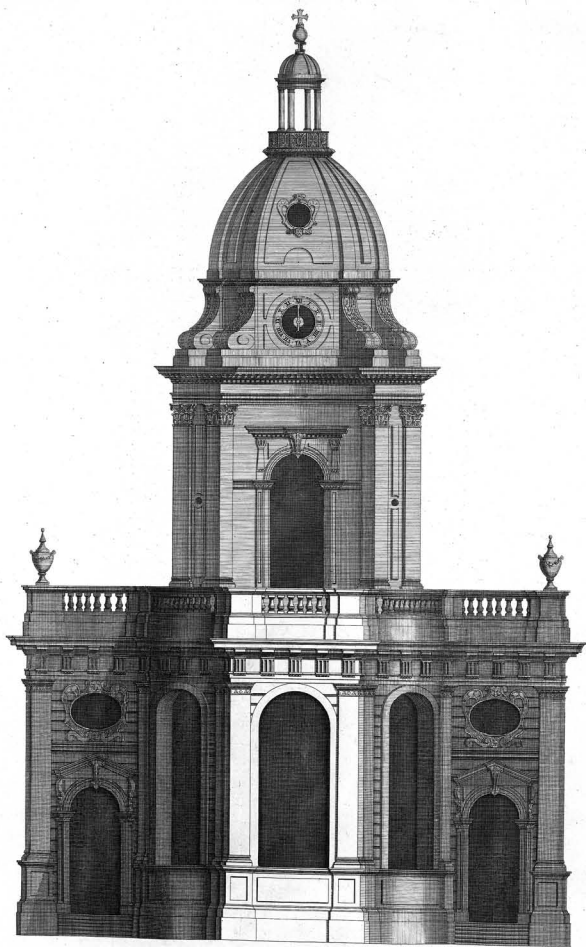
*Elevation d'un Nouveau Desin de mon Invention pour une Eglise dans la place de
Lincoln's Fields a Londres.*

Ga. Campbell Inz. et Delin.



a Scale of 60 feet

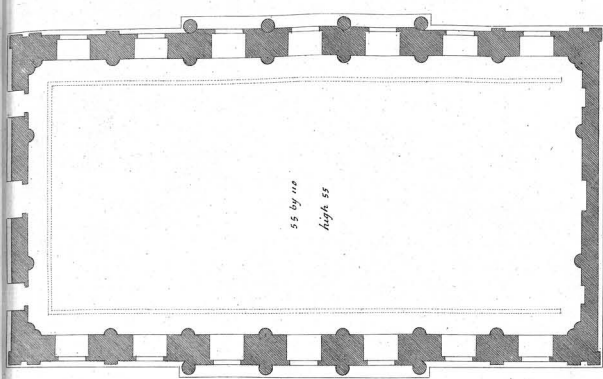
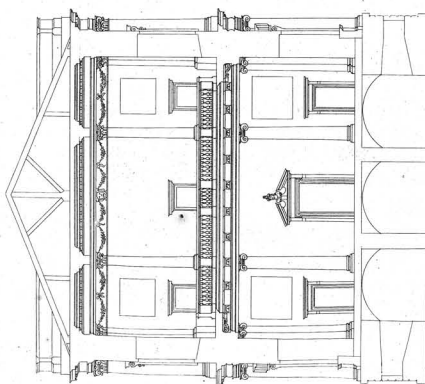
The plan of Birmingham Church
Plan de L'église a Birmingham



The East Prospect of S^t. PHILIP'S CHURCH at BIRMINGHAM in WARWICKSHIRE. Invented by Tho^s. Archer Esq^r.

Elevation Orientale De L'EGLISE Du S^t. PHILIP a BIRMINGHAM dans La COMTÉ de WARWICK.

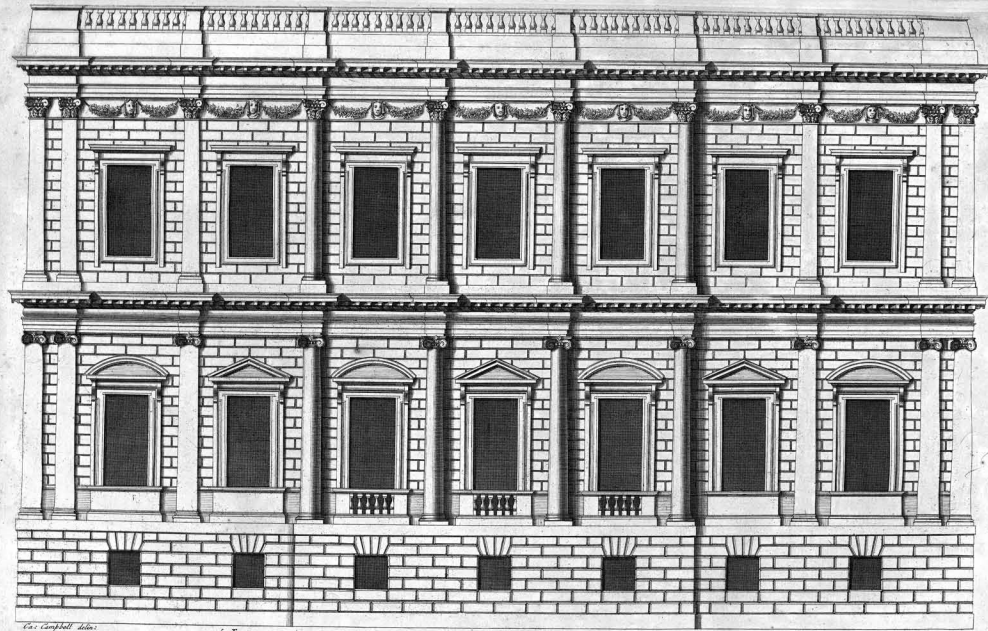
This plate is most humbly inscrib'd to the Hon^{ble}. William Pitt Esq^r. Principall Secretary of War &c^r.
C. a Campbell Delin^t.



The plan of the Banqueting house
plan de la grande Chambre d'Audience

The Section This plate is mistakenly inscribed to John Hedworth Esq^r

a scale of 1/4 inch = 1 foot



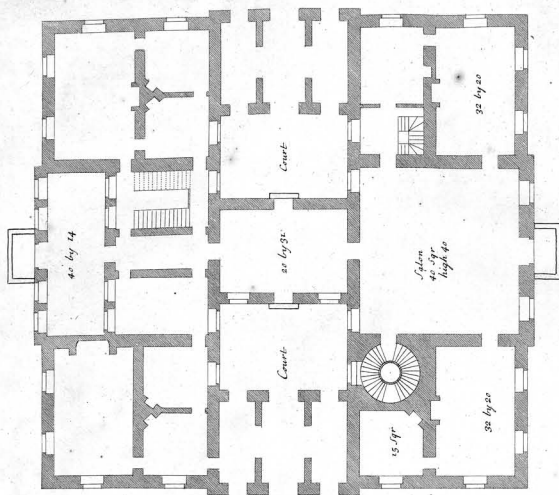
C. Campbell delin.

60 Feet

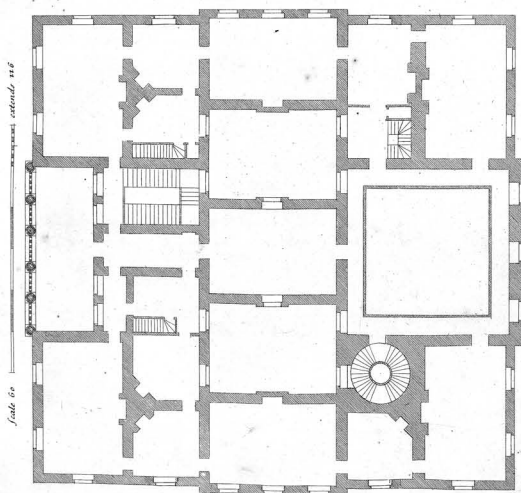
Extends 110.

La grande Chambre D'audience.

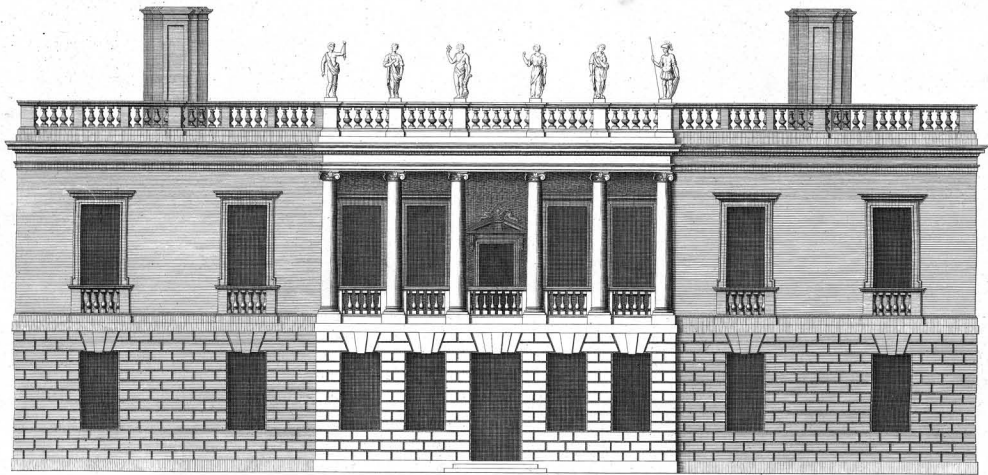
*The BANQUETTING House at WHITEHALL. by Inigo Jones.
To The R^t Honourable JOHN Earl of MAR: &c. Hereditary Governour of Sterling Castle,
principal Secretary of State, and Knight of the most illustrious Order of the THISTLE.*



The plan of the first story of ^e Kings House at Greenwich
is most humbly inferred to ^e W. Clifford & Governor of the Hospital



Plan of ^e Second floor
Plan du Second Etage



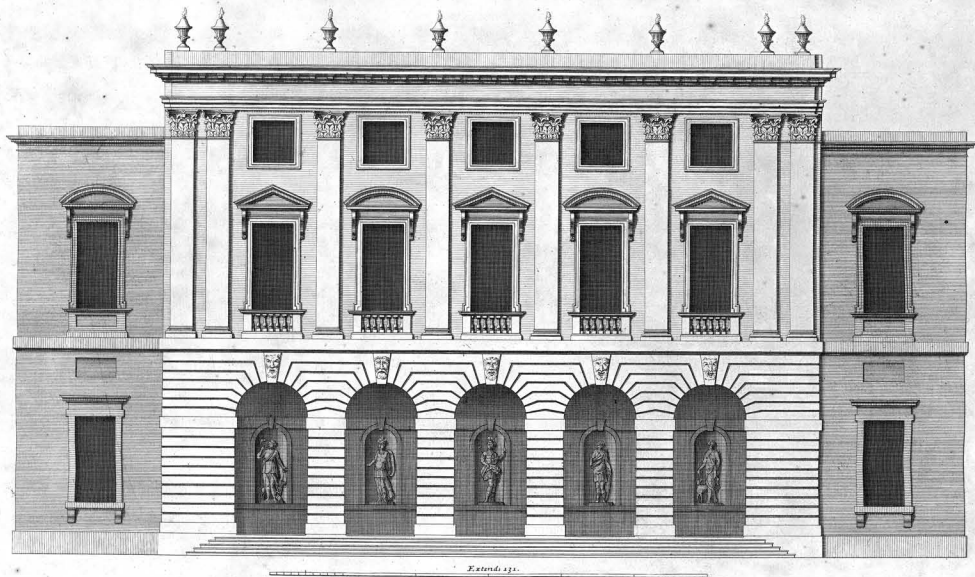
Extends 115

a Scale of 60 Feet.

The Elevation of the QUEENS House to the Park at GREENWICH Invented by Inigo Jones 1639.
is most humbly Inscribed to the Hon^{ble} GEORGE CLARKE Esq^r One of the Lords of the Admiralty. &c.

Elevation D'une Maison appartenante a La REINE. Du Côté Du Parca GREENWICH tres humblement Dedié a Monsieur M^r. CLERC. &c.

J. Campbell Delin.



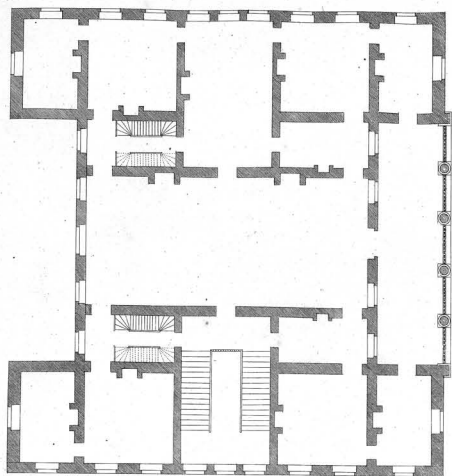
Extends 131.

a Scale of 10 Feet.

*The Elevation of the Great Gallery in SOMERSET House to the River
Is most humbly Inscribed to His Grace the Duke of Montrose principal Secretary of State &c.*

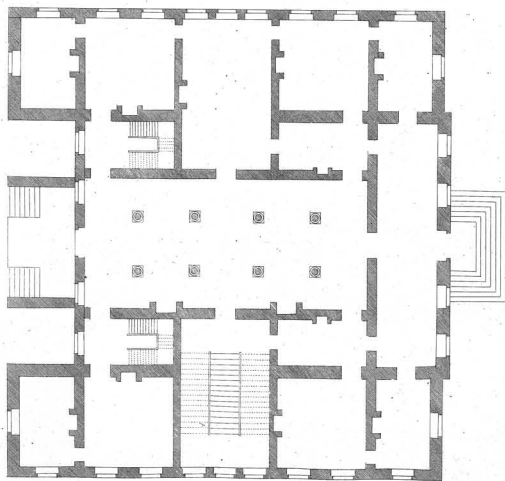
Elevation de La Grande Galerie Del Hotel de SOMERSET du costé de la Riviere. est tres humblement Dedie a Monseigneur le Duc de Montrose &c.

C. Campbell Delin.

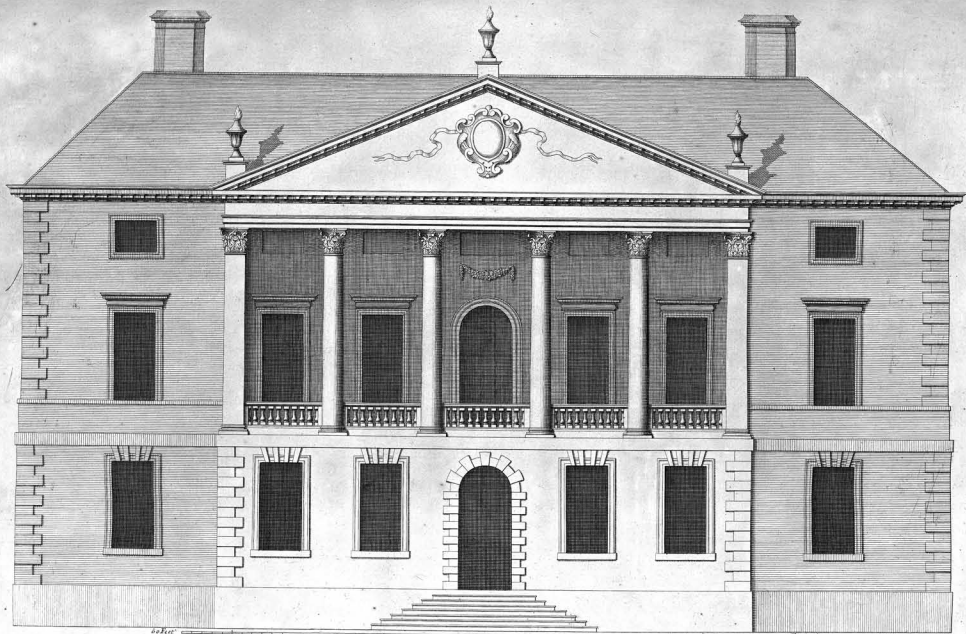


a scale of 60 feet
Etendue 92

The plan of the principal floor of Gunnersbury
Plan du principal étage de la maison de Gunnersbury



The plan of the first floor of Gunnersbury house
Plan du premier étage de la Maison de Gunnersbury



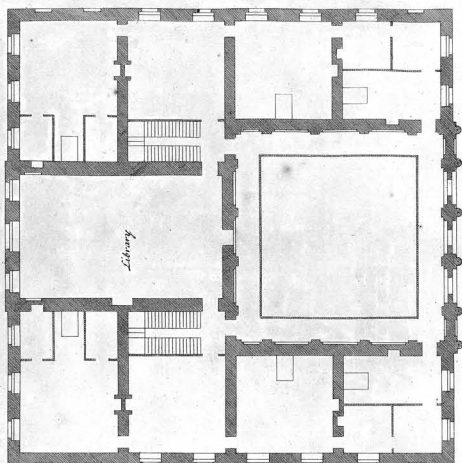
66 feet

The elevation of GUNNERSBURGH HOUSE near BRANTFORD in the County of MIDDLESEX by Inigo Jones.

Extends 23

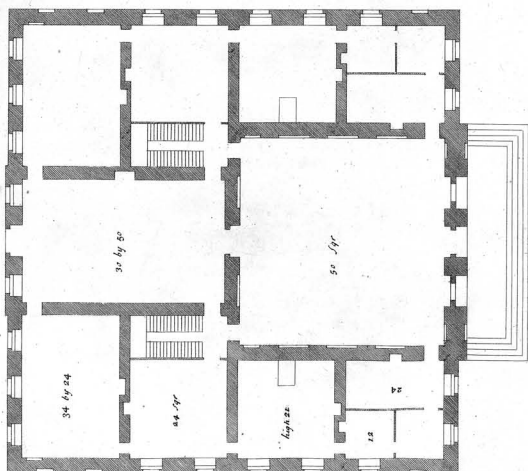
J. Smith del.

Elevation de La Maison de GUNNERSBURGH Demi-Lieue de BRANTFORD dans la Comte de MIDDLESEX.

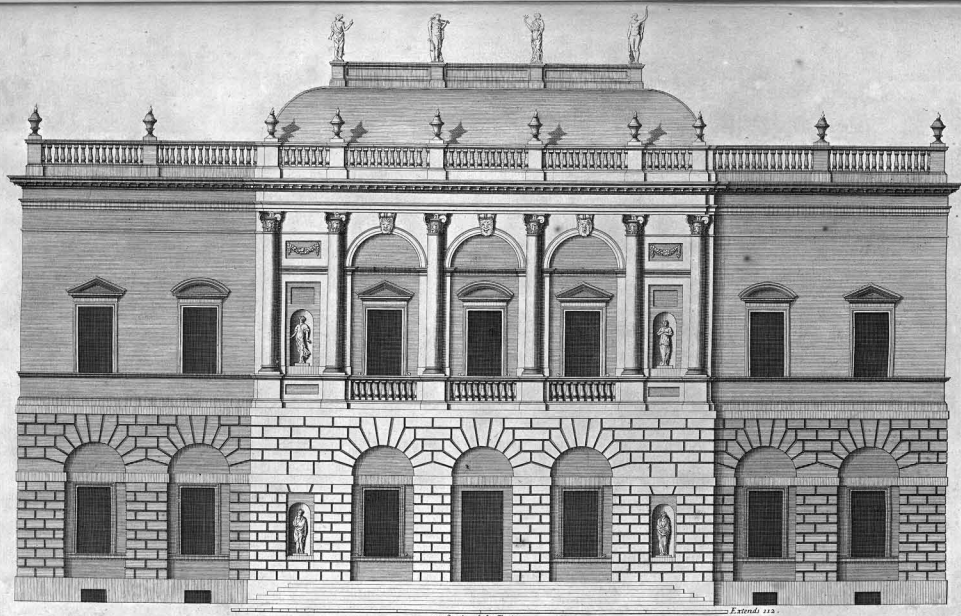


Plans in
a Scale of Feet

The plan of a Chamber floor
Plan de Second Etage

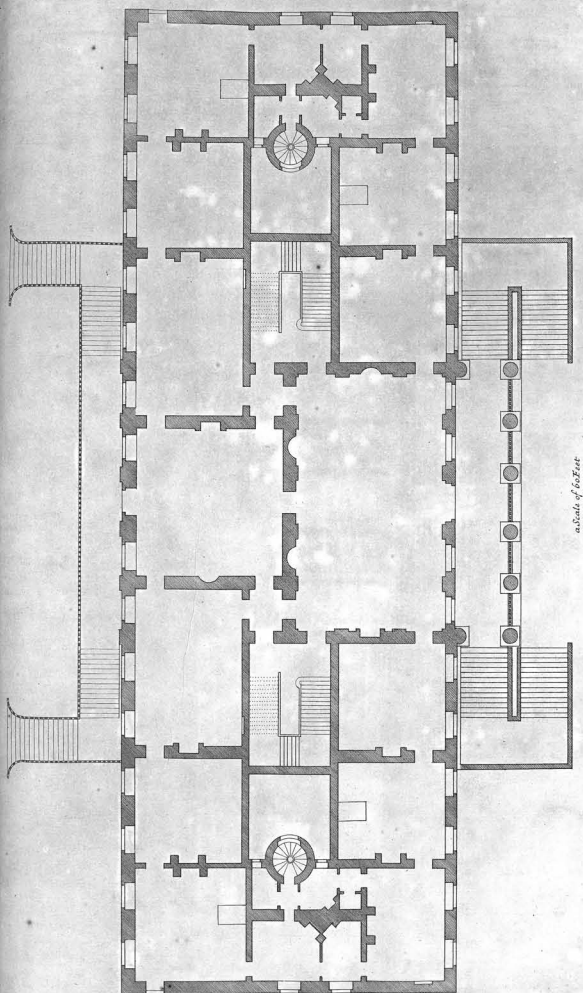


The plan of the principal story of a New design for the Grace of Duke of Argle
Plan de principal Etage



a Scale of 60 Feet.
The Elevation of a New Design of my own Invention in the Style of Inigo Jones.
Is most humbly Incribed to his Grace the Duke of ARGYLE &c Knight of the most Noble Order of the Garter.
Elevation D'un nouveau Dessein De mon Invention tres humblement Dedicé a Monseigneur Le Duc D'ARGYLE.

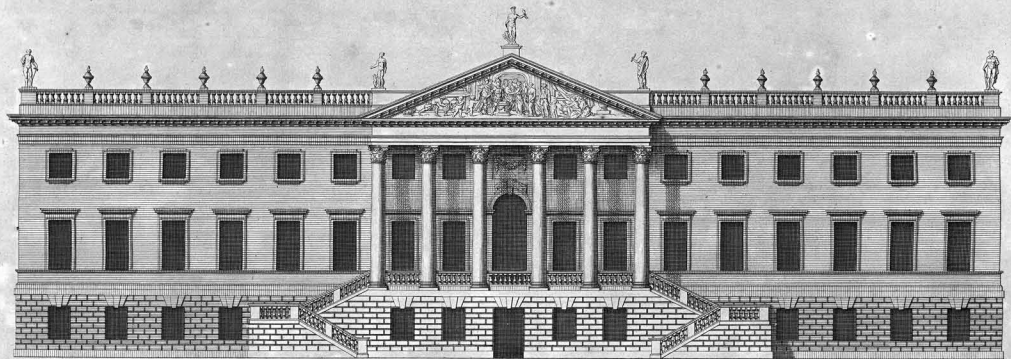
Ca: Campbell Inar: et Delin:



a Scale of 60 Feet

Extends 200.

*The Plan of the Principal Floor of the first Design for Weyfield.
Plan du Principal Etage du premier Dessin de Weyfield.*



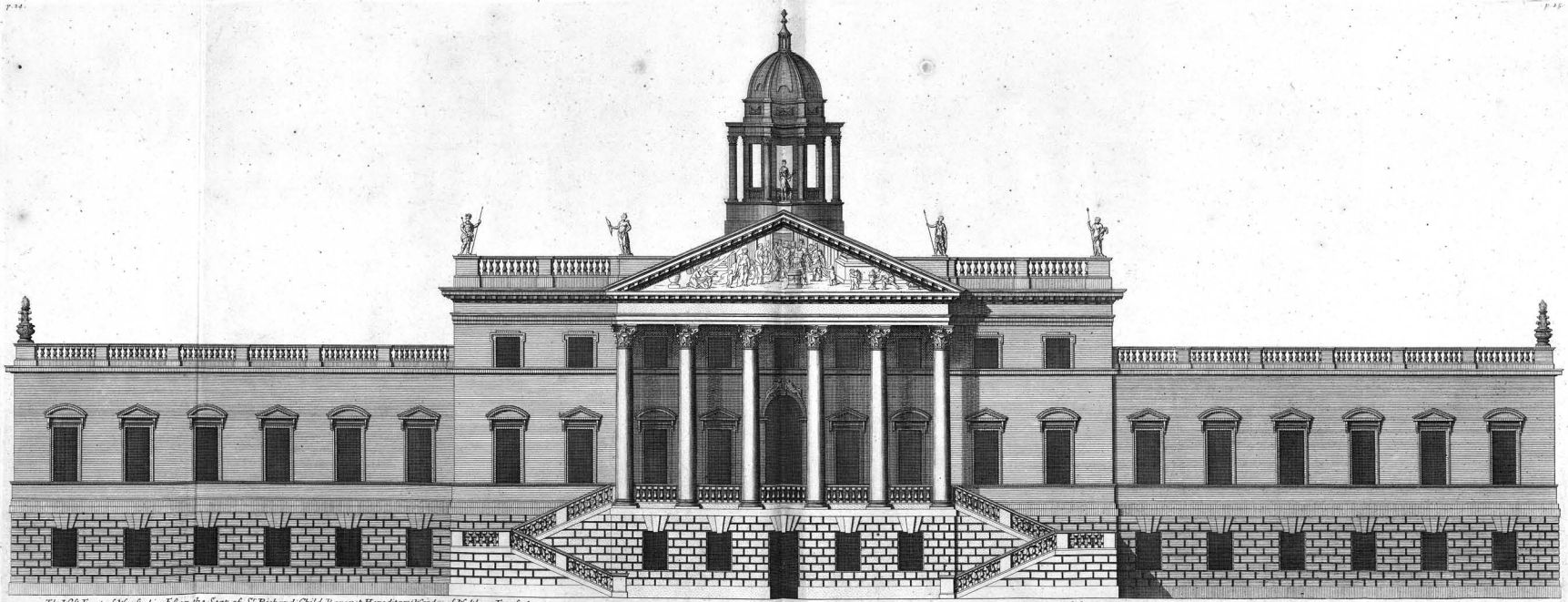
Extends 200.
a Scale of 100 Feet.

The first Design of the West Front of Wansford as intended by S^r Richard Child Barre.

Is most humbly Dedicated to my Lady Child

Elevation de la Maison de Wansford, comme est la Première pensée de L'Architecte.

Ca: Campbell Inw et Delin.

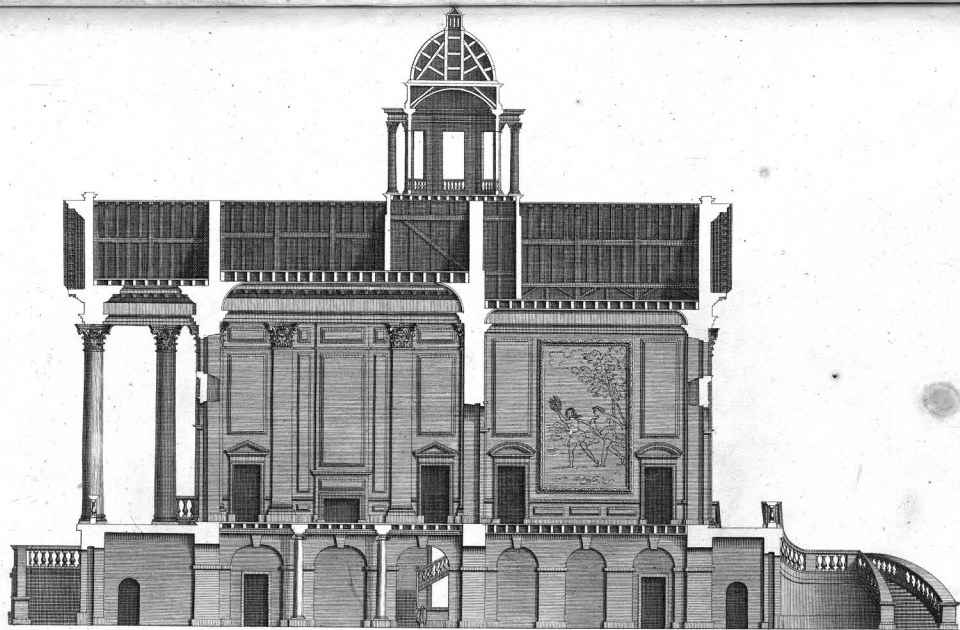


*The West Front of Wanssted in Essex the Seat of S^t Richard Child Baronet Hereditary Warden of Waltham Forest &c.
To whom this Plate is most humbly Inscrib'd.*

a Scale of 40 Feet.

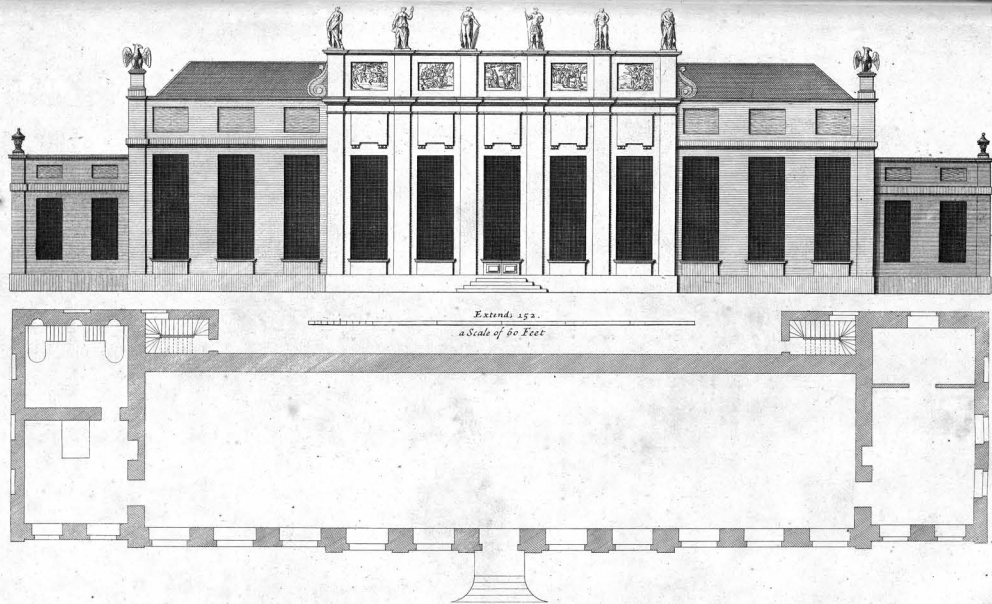
Extends 280.

Elevation de L'Entrée du Chateau de WANSSTED dans la Comté d'ESSEX appartenant a M^r CHILD Chevalier.



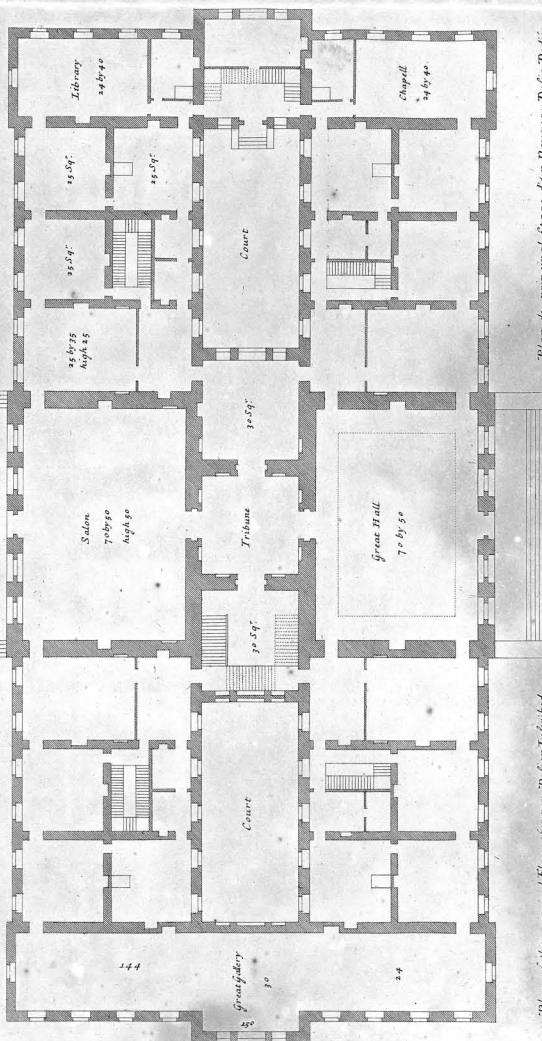
The Section of Wansted house.

Le profil de la Maison de Wansted.



*The Greenhouse at WANSTED in ESSEX the Seat of S^r RICHARD CHILD Baronet Hereditary Warden of
Waltham Forest &c. to whom this Plate is most Humbly Inscribed.
L'Orangerie au Jardins de WANSTED dans la Comté d'ESSEX.*

Ga Campbell Delin

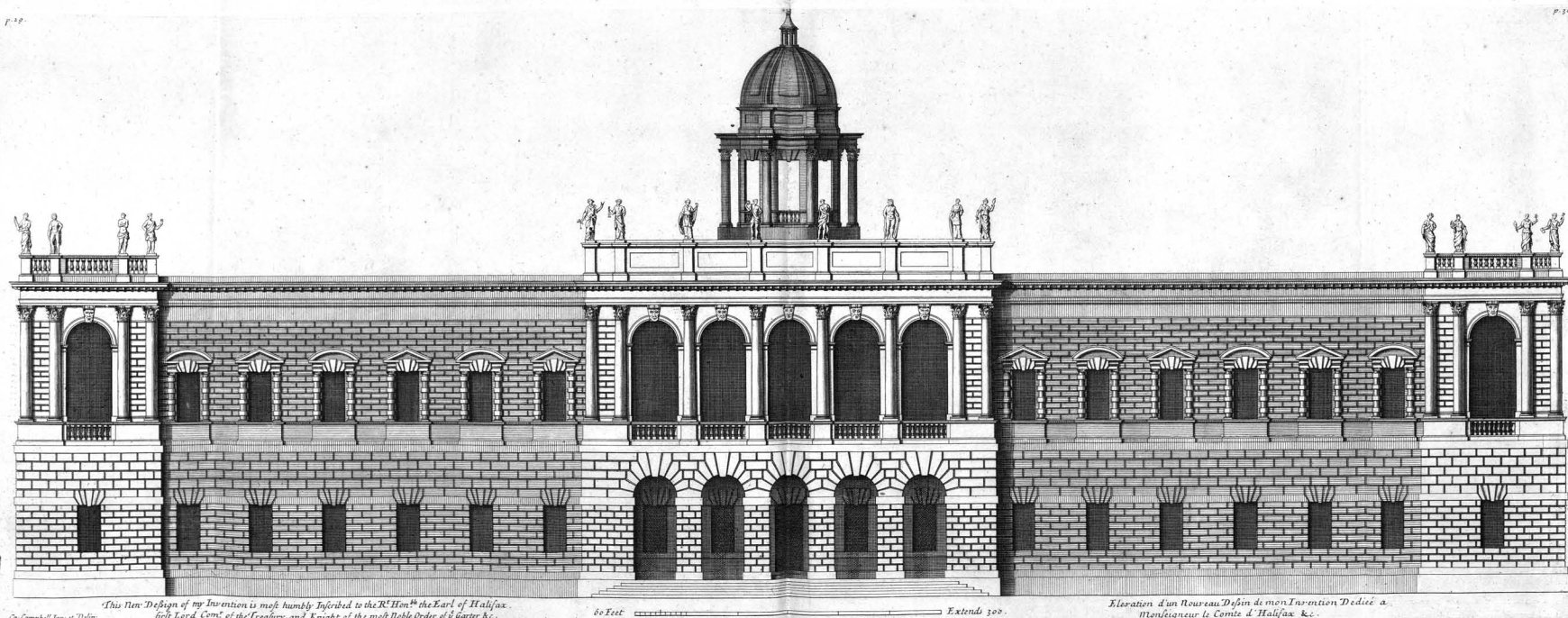


Plan du principal Etage d'un Nouveau Desin. Dedié
à Monseigneur le Comte D' Halifax &c.

Extends 100

Plan of the principal Floor of a new Design Inſcribed
to the R^t Hon^{ble} the Earl of Halifax &c.

80 Feet

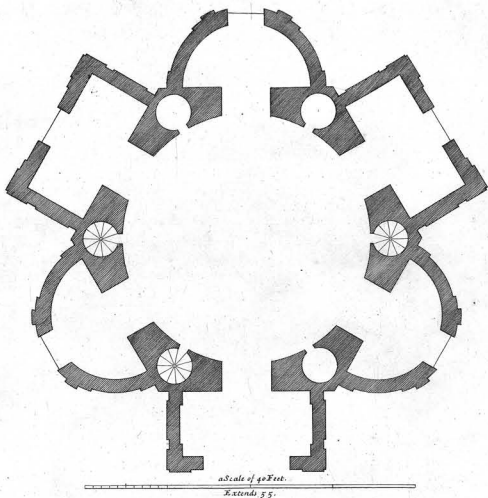


*This New Design of my Invention is most humbly Inferred to the R^h Hon^{ble} the Earl of Halifax
first Lord Com^r of the Treasury and Knight of the most Noble Order of St. George &c.*

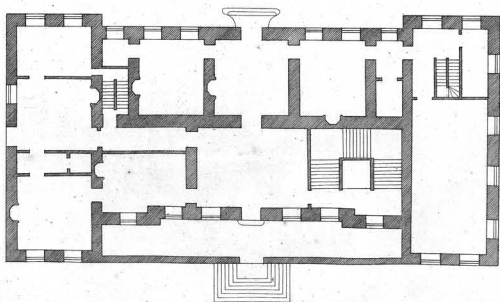
By Campbell Sec^y to Design

60 Feet Extends 500.

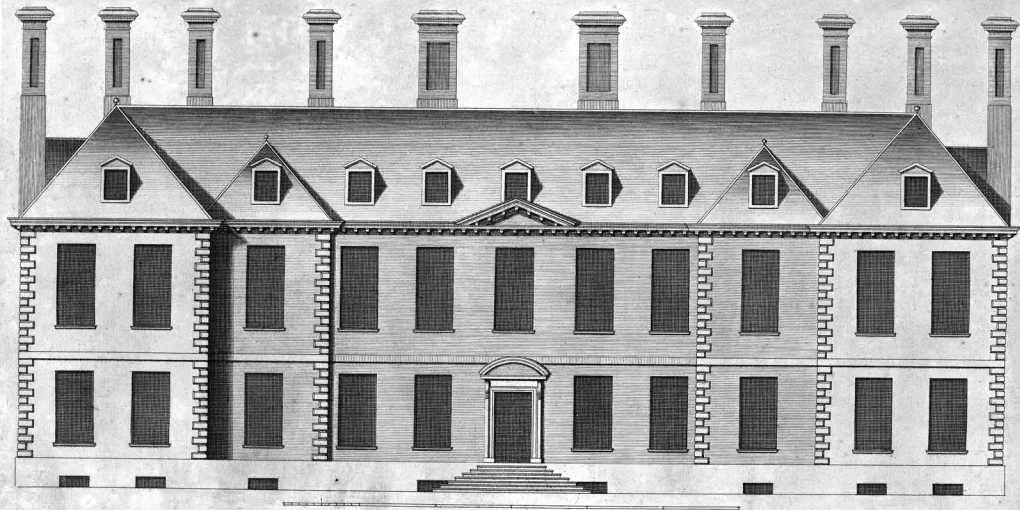
*Elevation d'un Nouveau Dessein de mon Invention Dedié a
Monsieur le Comte d'Halifax &c.*



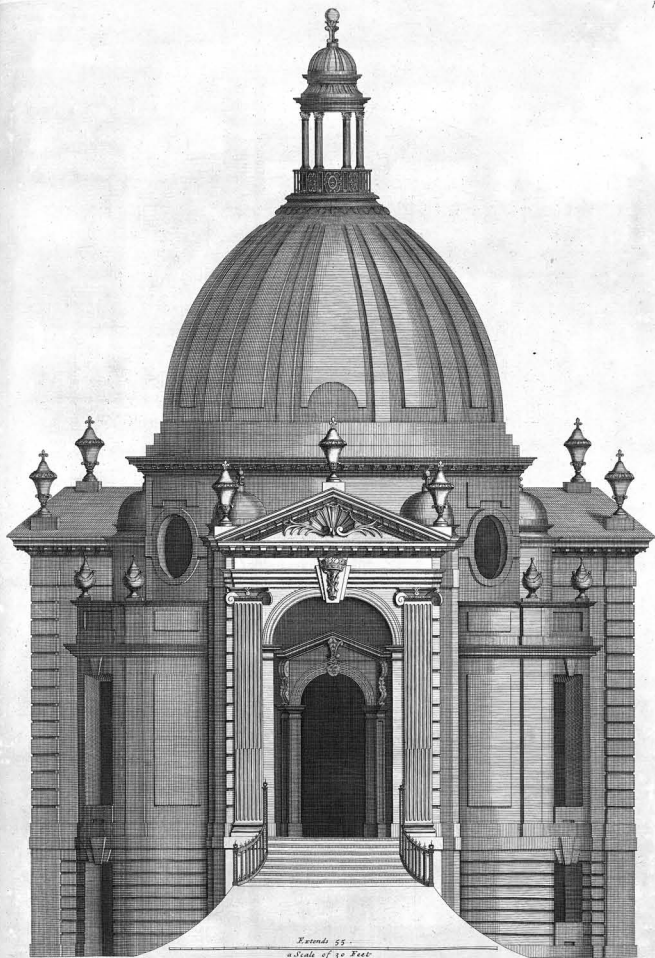
The Plan of his Grace the Duke of Kent's Garden Pavilion .
Plan D'un Nouveau Batiment au Jardin du Monseigneur le Duc de Kent.



The Plan of Burlington house in Piccadilly
Plan de L'Hôtel de Burlington .



Burlington house in Piccadilly London.
To the Right Hon^{ble} Richard Boyle Earl of Burlington and Cork &c.
Hereditary Lord High Treasurer of the Kingdom of Ireland

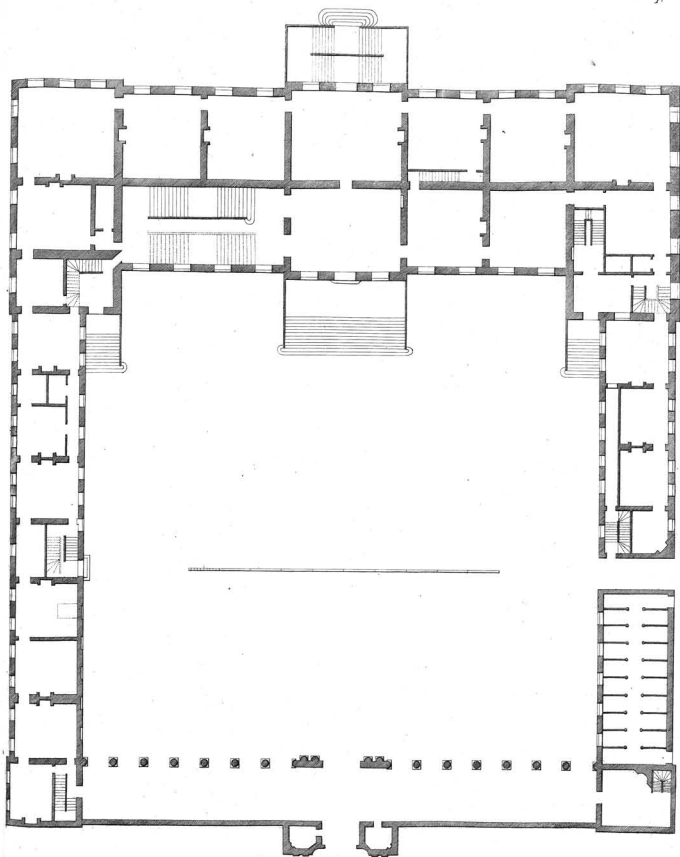


Extends 55.

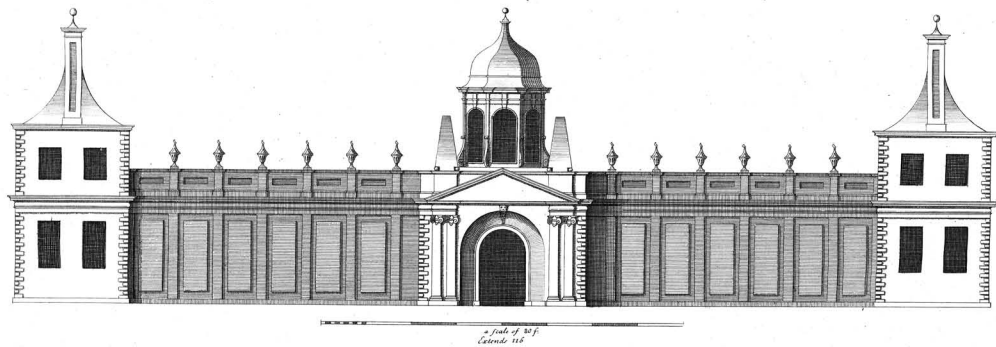
a Scale of 30 Feet

A New Building at y^e end of his Grace y^e Duke of KENTS gardens in BEDFORD SHIRE. Invented by Tho^r Archer Esq^r
 To the most Potent Prince HENRY Duke of KENT &c Knight of y^e most Noble Order of y^e Garter. this New Building at y^e end of his
 Graces Gardens in BEDFORD SHIRE is most humbly Inscribed.
 Un Nouveau Bâtimēt a bout des Jardins Du Duc De Kent dans Le Comté de BEDFORD .

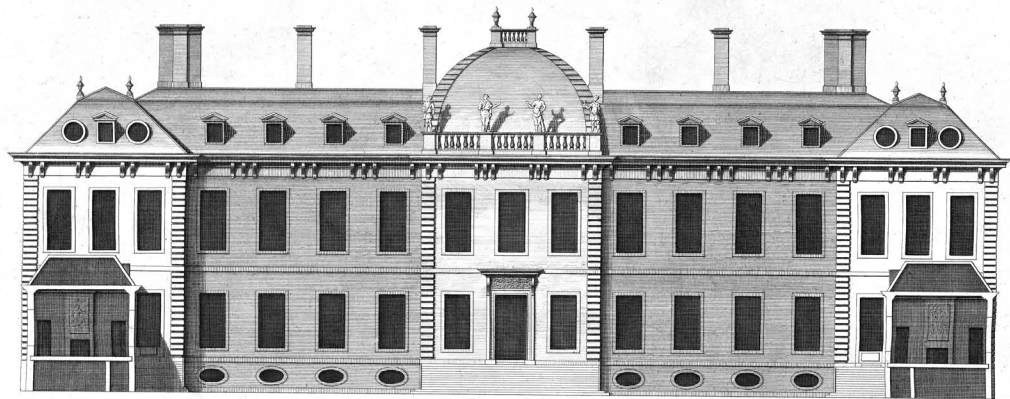
Colonus Campbell Delin.



The Plan of y^e Principal Floor of Montague House is most humbly dedicated to her Grace y^e Dutches of Montague, &c.
Plan du 1^{er} premier: Estage de L^e Hostel de Montaguë.



The prospect of Montague house to the street: London.
Elevation de L'Entrée de L'Hostel de Montague a Londres



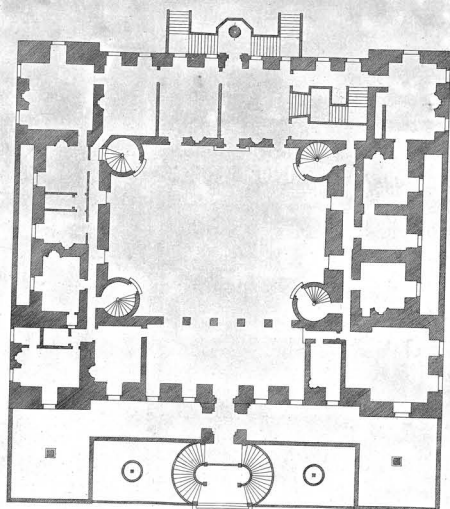
a Scale of 60 Feet.
Extends 128.

The Elevation of MONTAGUE House to the Court in Great Russell Street LONDON.

Is most humbly Inscribed to his Grace the Duke of MONTAGUE &c:

Elevation De l'Hostel De MONTAGUE, du costé de La Cour a LONDRES Inven: par M. Pouget.

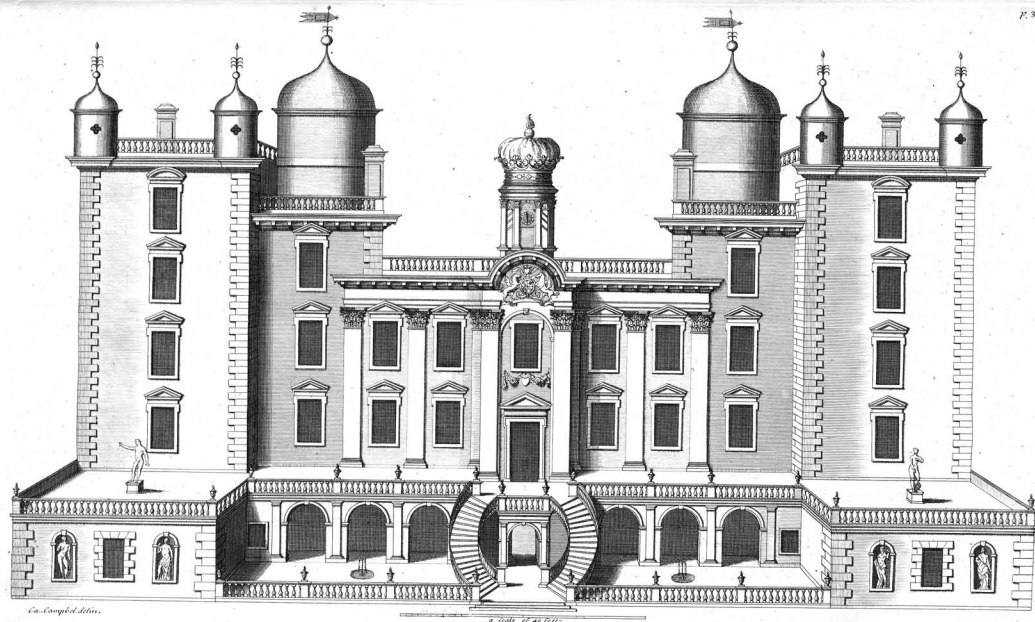
C. Campbell Delin:



a scale of 60 feet —
 Latour 145

The Plan of Drumlenrig Castle in Scotland

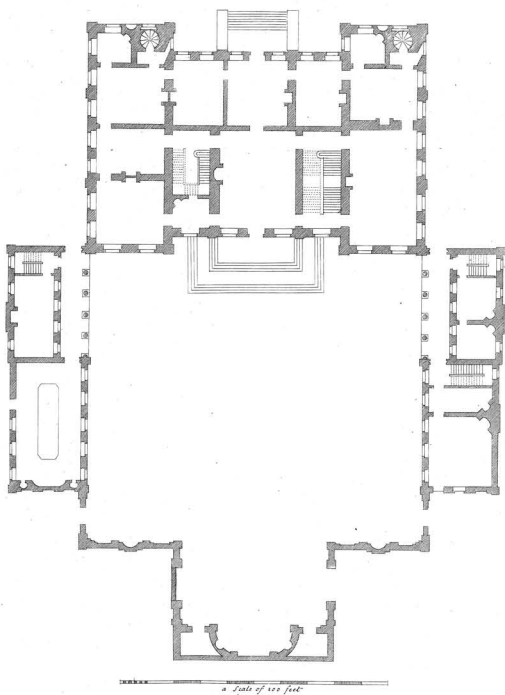
Plan du Chateau de Drumlenrig



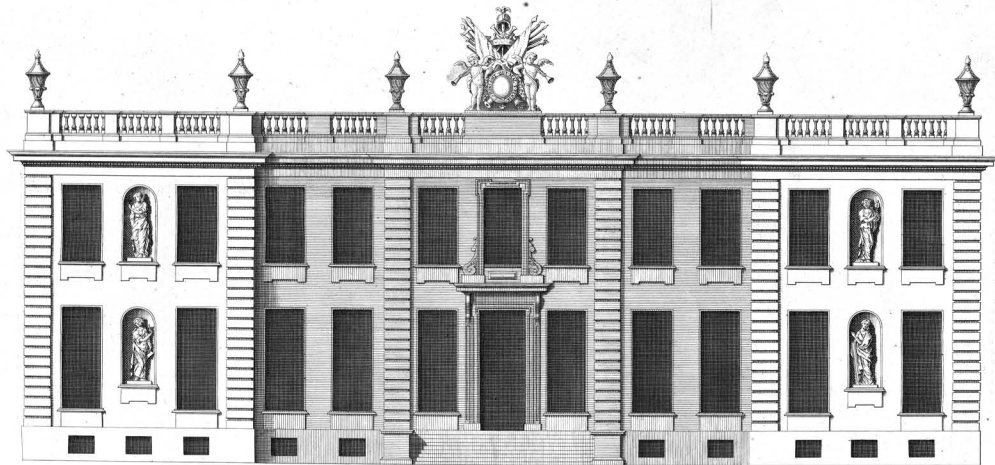
En. Campbell delin.

a Scale of 40 feet

The Elevation of DRUMLEURG Castle the Seat of His grace the Duke of Queensberry
 and Newcastle
 Elevation Du Chateau de Drumleurg appartenant a Duc de Queensberry et de Newcastle



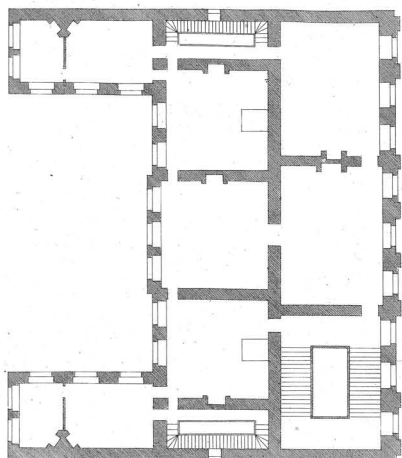
The plan of Marlborough house & James's
Plan de L'Hôtel de Marlborough à Londres



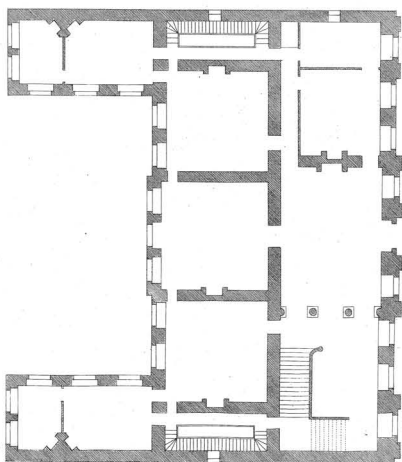
Extends 125.
a Scale of 60 Feet.

*The Elevation of MARLBOROUGH House to S^t JAMES'S PARK, Invented by Christopher Wren Esq^r 1709.
Is most humbly Dedicated to her Grace the Dutchess of MARLBOROUGH Princess of MENDELHEIM &c.
Elevation Del. Hessel De MARLBOROUGH du costé du PARC Du S^t JACQUES a LONDRES.*

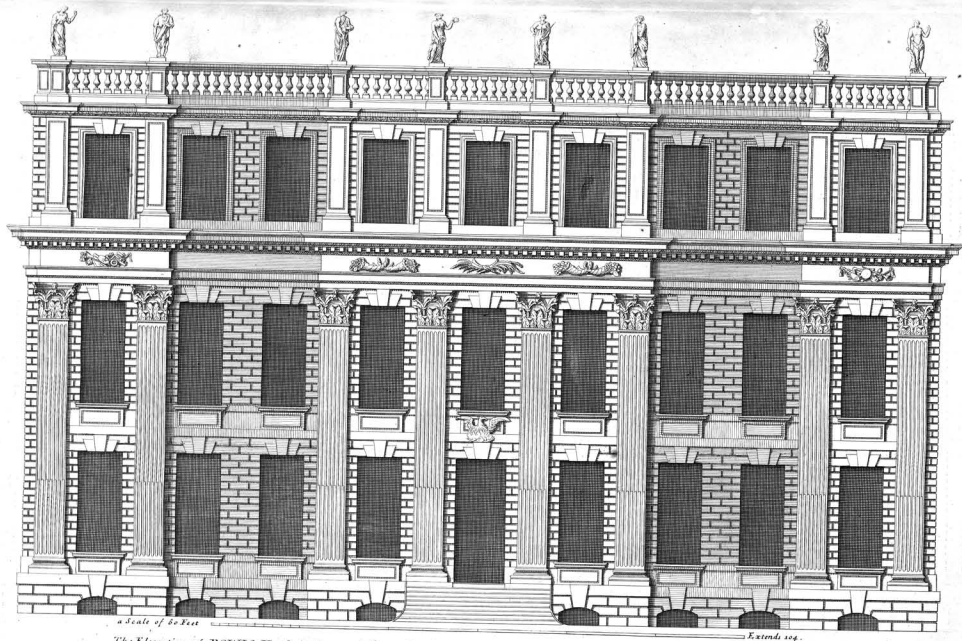
Cu. Campbell Delin:



*Chaplan of St. Second Story
plan du Second Etage*

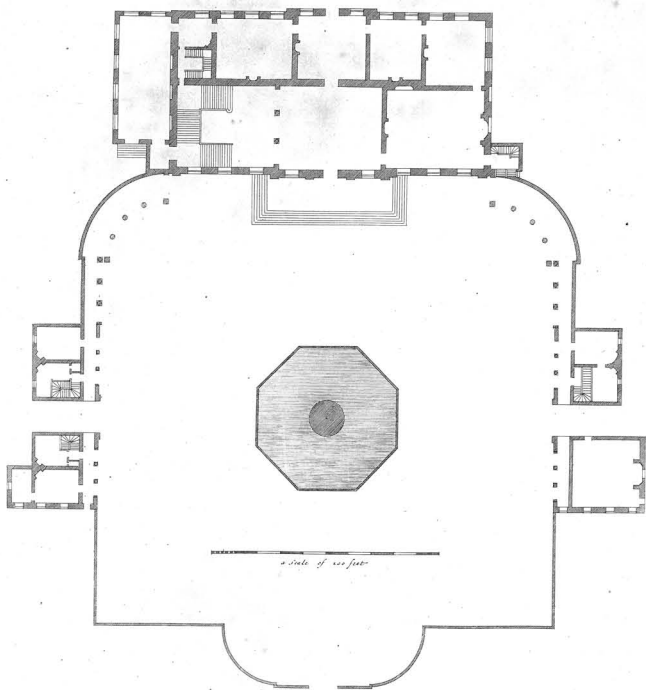


*The plan of the first story of the chapel
plan du Premier Etage*

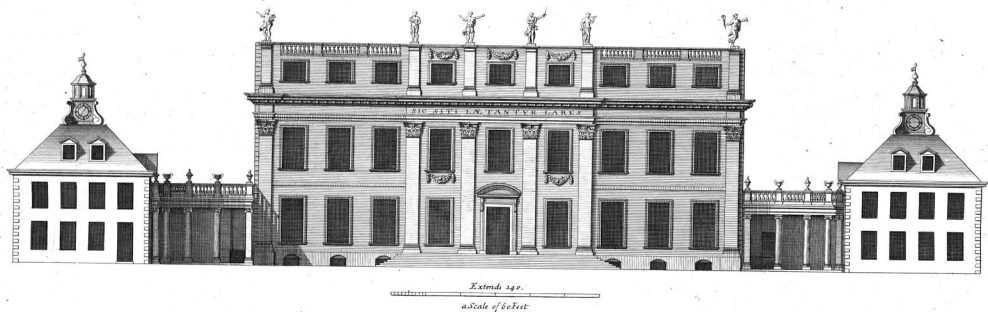


The Elevation of POWIS House in Ormond Street LONDON 1714. Is most humbly Inscrib'd to his Grace the Duke of POWIS &c
Elevation Del Hoesel. De POWIS a LONDRES l'an 1714.

C. Campbell Delin.



The Plan of Buckingham house in St. James's Park
Plan De L'Hôtel De Buckingham

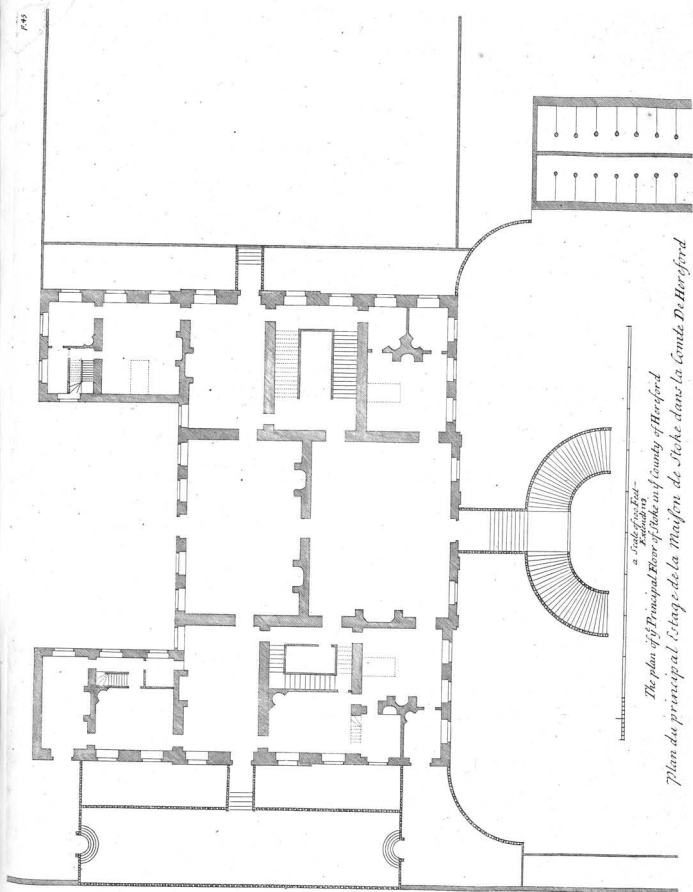


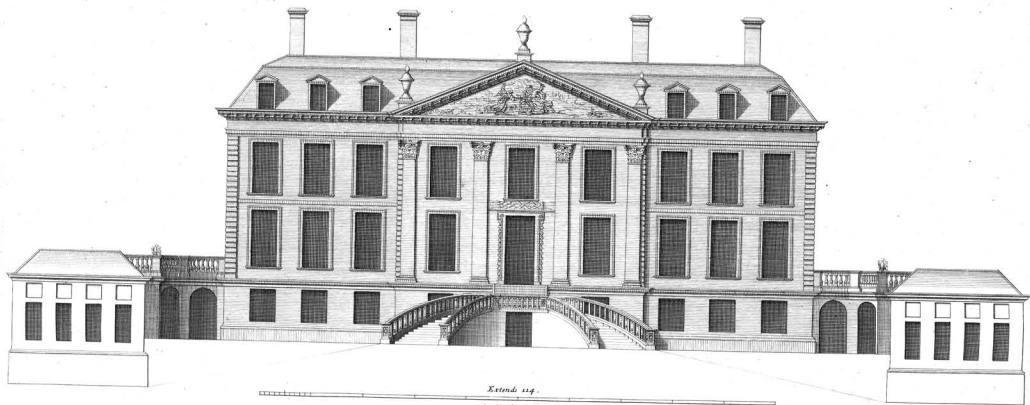
The Elevation of BUCKINGHAM House in S^t JAMES'S PARK.

*Is most humbly Inscrib'd to his grace the Duke of BUCKINGHAM Lord President of Council,
and Knight of the most Noble Order of the Garter &c;*

*Elevation Del' Hôtel De BUCKINGHAM du côté Du PARC de S^t JACQUES à LONDRES.
est tres humblement Dedié a Monseigneur le Duc De BUCKINGHAM &c :*

Ca. Campbell Delin:



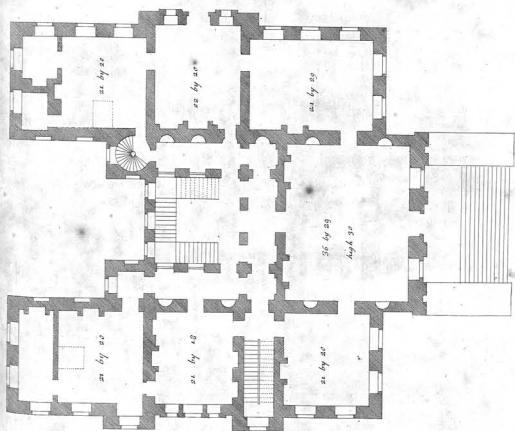


*The Elevation of STOKE, in the County of HEREFORD, the Seat of M^r AUDITOR FOLEY,
to whom this Plate is most humbly Inscr^{ib}d.*

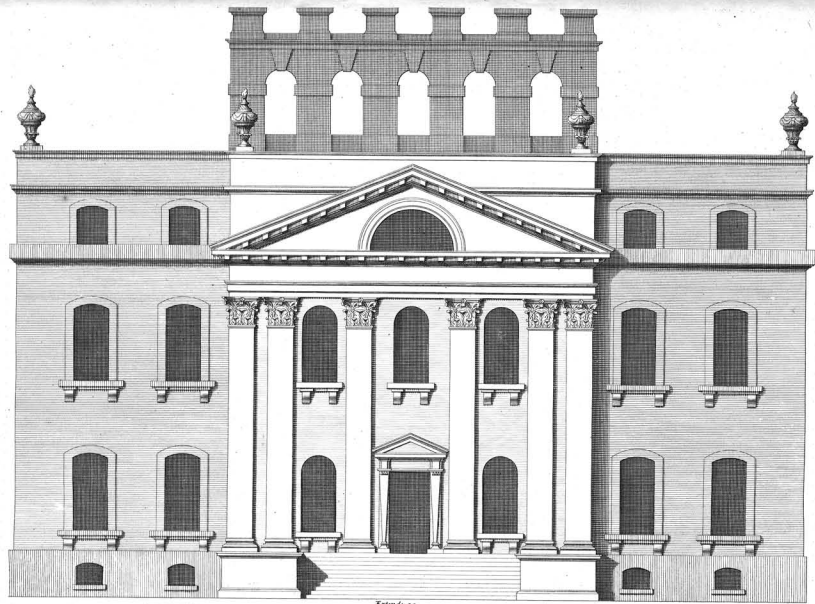
Elevation de La Maison de STOKE, dans La Comté de HEREFORD appartenente a M^r FOLEY.

C^o Campbell Delin.

The Plan of the Chamber floor of Kings Weston
Plan du Second Etage de Kings Weston



The Plan of the Principal floor of Kings Weston
Plan du Premier Etage de Kings Weston



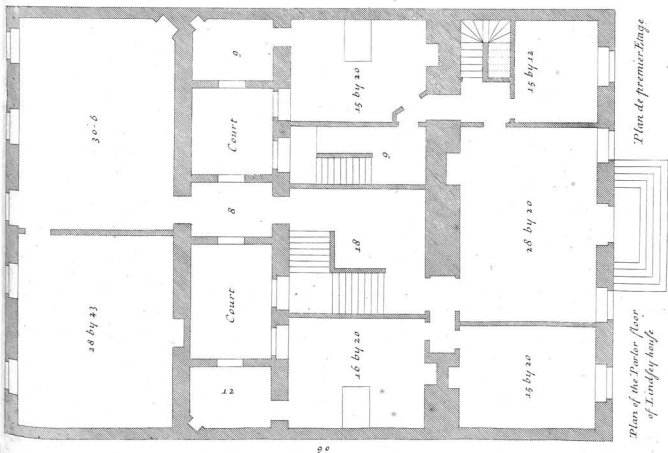
Extends 92
a Scale of 60 Feet.

The Elevation of KINGSWESTON in the County of GLOUCESTER the Seat of the R^d Hon^{ble} EDWARD SOUTHWELL, Esq^r. Principal Secretary of State for the KINGDOM of IRELAND

Designed by S^r Jo: Vanbrugh K^t

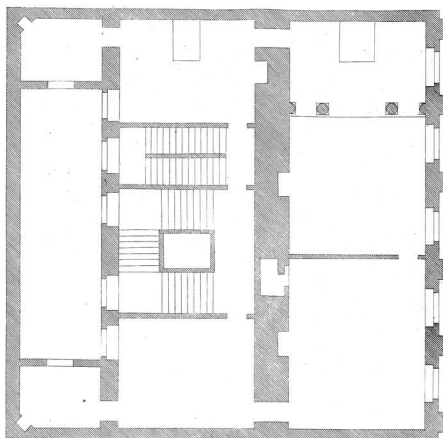
Elevation de La Maison De KINGSWESTON dans La Comté de GLOUCESTER.

C. Campbell Delin.



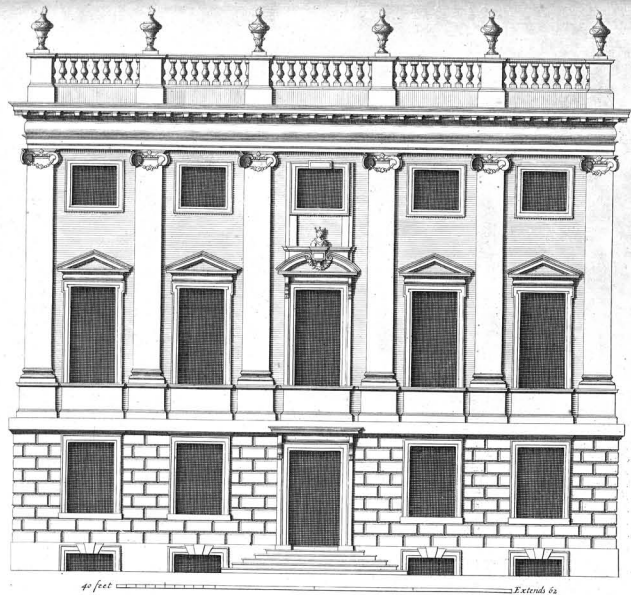
Plan of the Parlor floor
of Lindby house

Plan de premier étage



Plan of the principal story

Extends 62

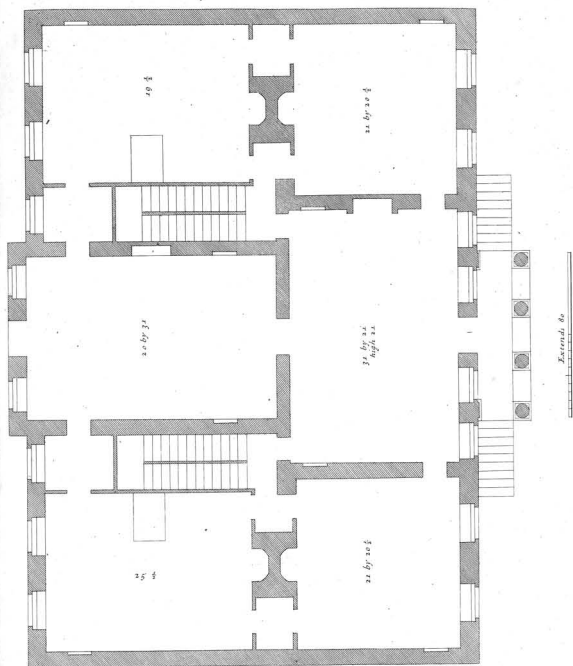


The Elevation of Lindsey house in Lincoln inn fields. is most humbly Inscribed to the R^t Honorable the Marquis of Lindsey Lord Great Chamberlain of England &c.

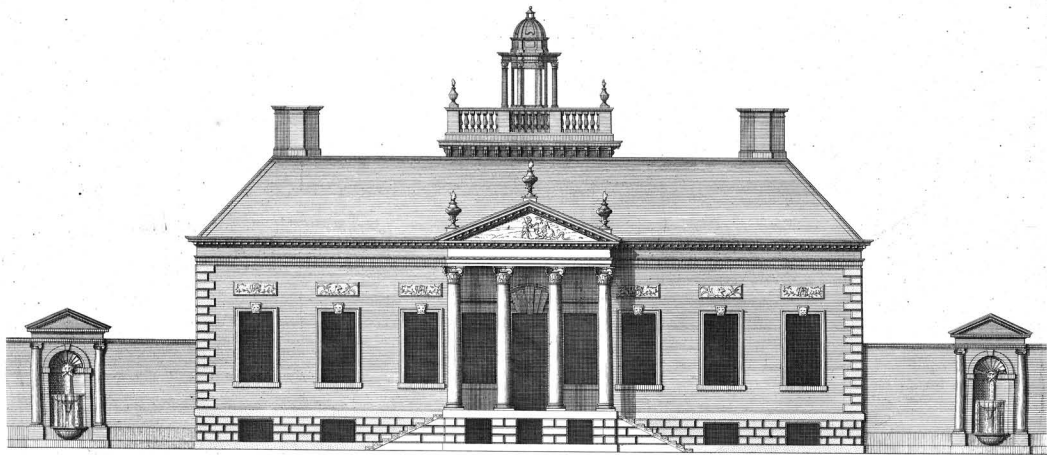
Elevation de LHôtel de Lindsey dans la place de Lincoln innfields a Londres.

En l'année 1721.

Inigo Jones Inscr.



Plan of the principal floor of Wilberry house.
 Plan du principal Etage de la Maison de Wilberry.

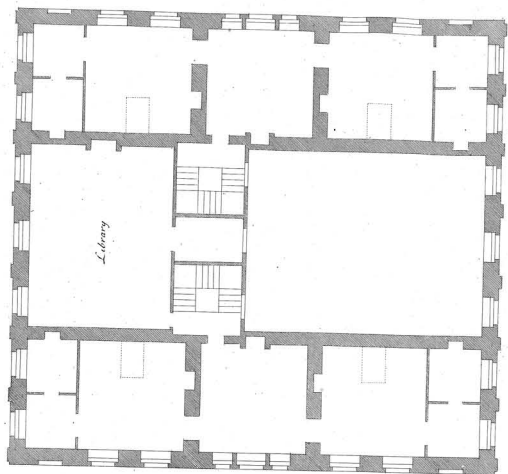


a Scale of 20 Feet.
It stands 22.

*The Elevation of Wilberry house in the County of Wilt the Seat of William Benson Esq. Invented and built by himself
in the Style of Inigo Jones. to whom this Plate is most humbly Incribed.*

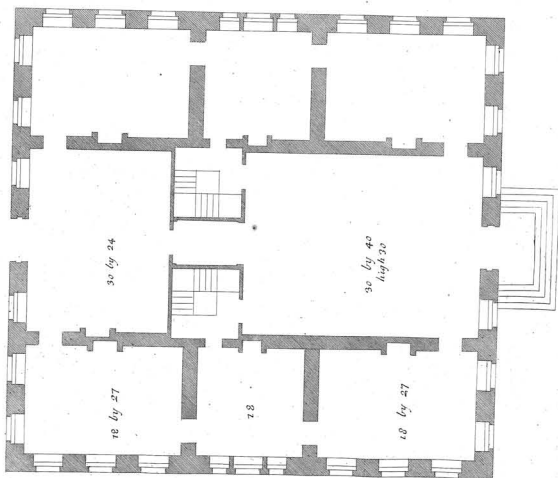
Elevation de la Maison de Wilberry dans la Comté de Wilt.

Ca. Campbell Delin.

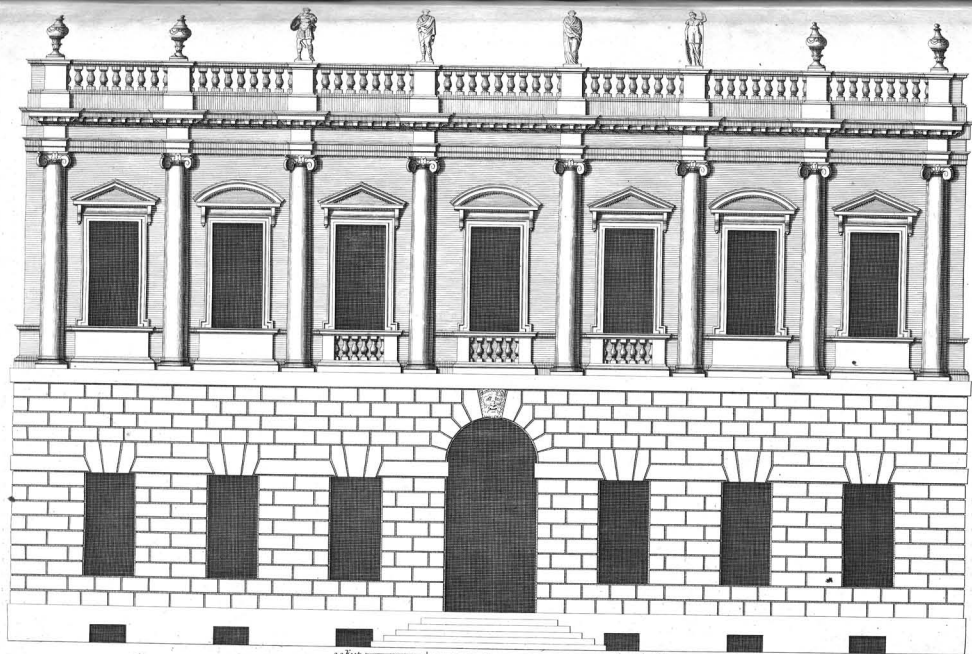


Etendue 76

The Plan of Chamber floor
Plan du Second Etage

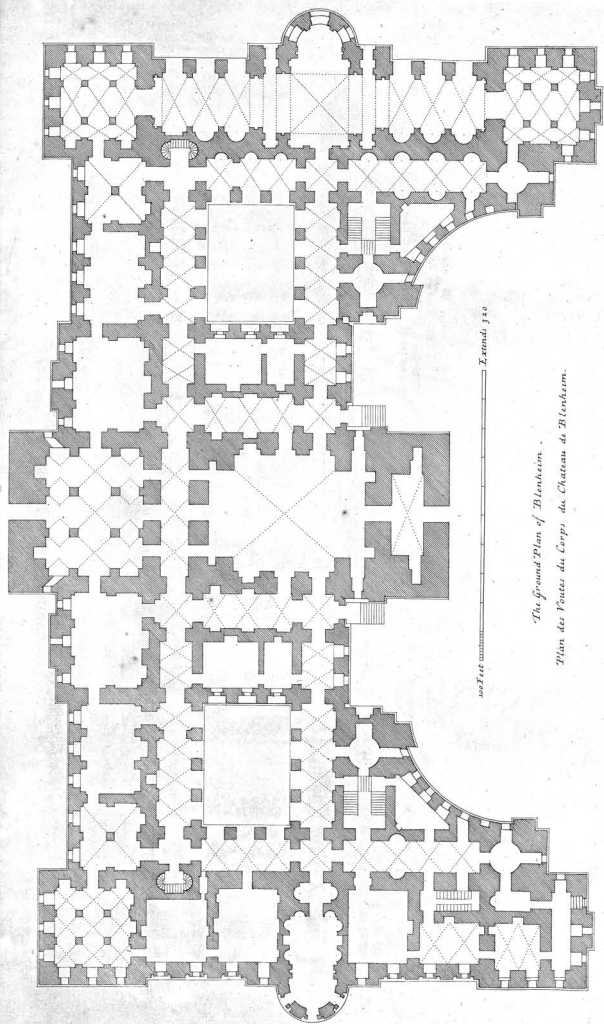


The plan of Principal story of the Cartof-Basf new Design
Plan du principal Etage



Ca. Campbell Invenit et Delin.

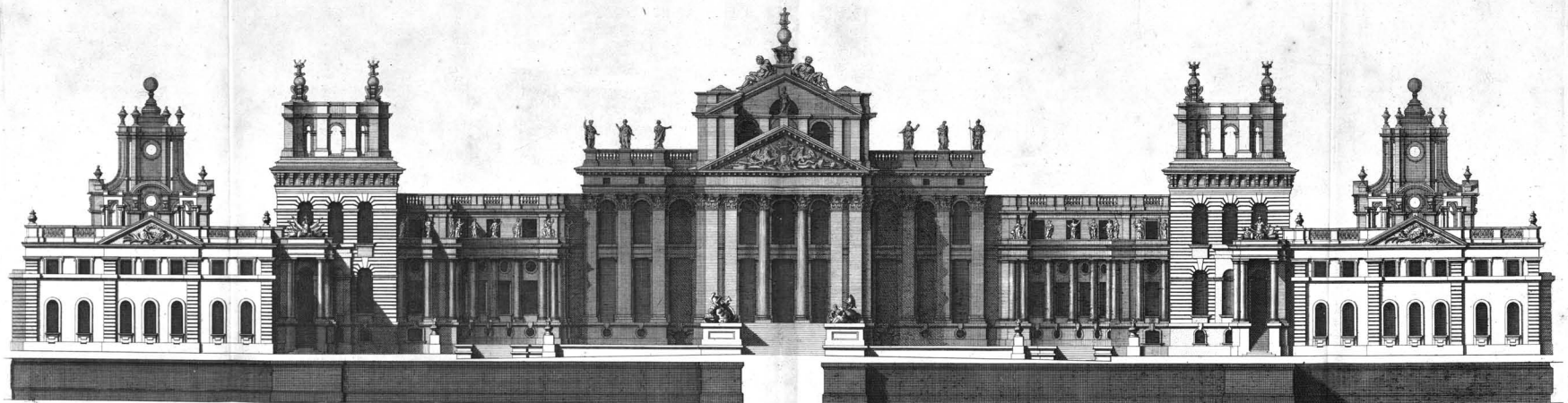
This new Design of my Invention is most humbly Inscrib'd to the Rth Hon^{ble} The Earl of Ilay k^t. Justice General and Lord Register for North Britain —
 Elevation d'un nouveau Dessin de mon Invention tres humblement Dedie a Monseigneur le Comte D'Ilay k^t.



The Ground Plan of Blenheim.
Plan des Voutes du Corps du Château de Blenheim.



Plan of the principal floor of Blenheim.
Plan du premier Etage.



100 Feet  Extends 490

The Generall Front of Blenheim Castle is most humbly Inscrib'd to his Grace John Duke of Marlborough, Prince of the Holy Empire Capl Generall of all his Majestys forces, and Knight of the most Noble Order of the Garter &c.

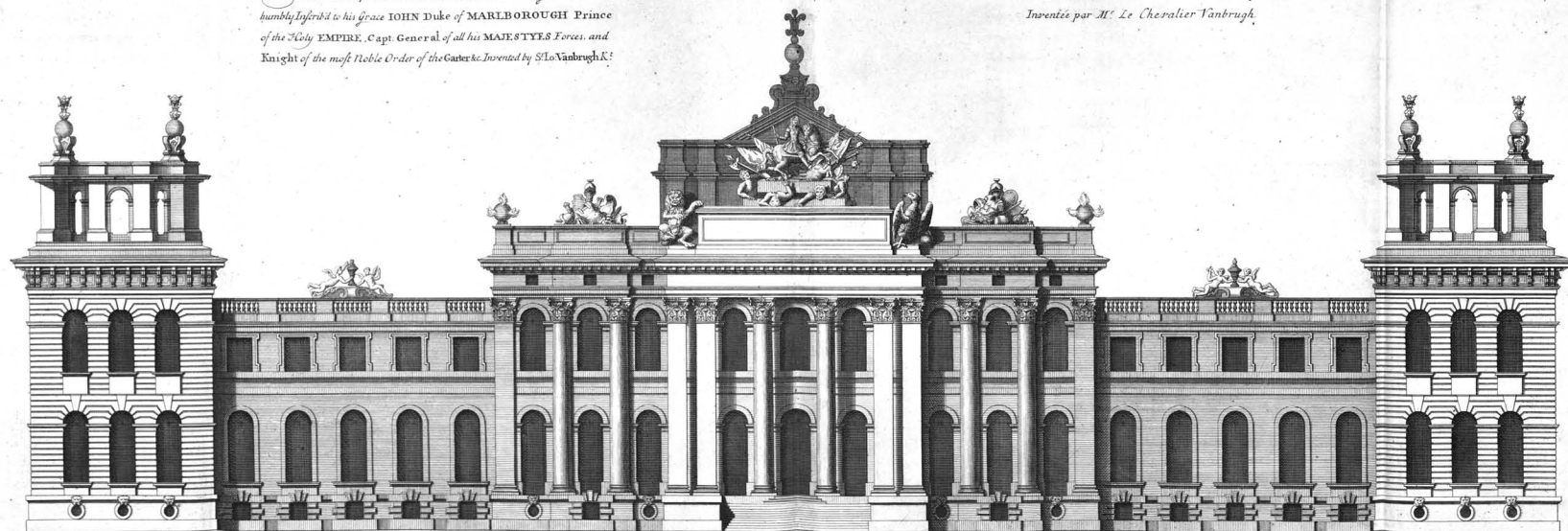
Design'd by S^r John Vanbrugh K^t

Elevation General du Chateau de Blenheim.

C^a. Campbell Delin.

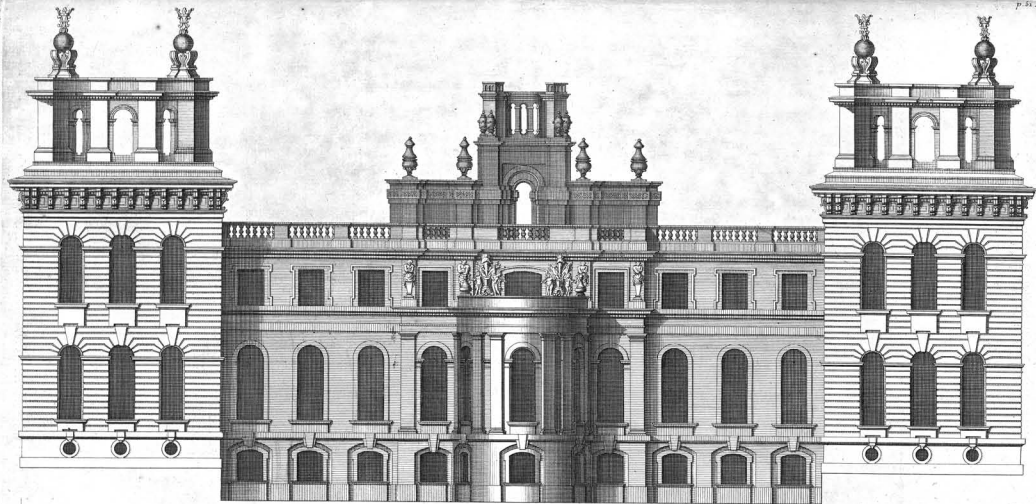
The Elevation of BLENHEIM Castle towards the Gardens. Is most humbly Inferred to his Grace JOHN Duke of MARLBOROUGH Prince of the Holy EMPIRE, Capt. General of all his MAJESTY'S Forces, and Knight of the most Noble Order of the Garter, by Sir John Vanbrugh, K.

*Elevation Du Chateau de BLENHEIM du Costé des Jardins.
Inventée par M^r. Le Chevalier Vanbrugh.*



Ca Campbell Delin.

*a Scale of 100 Feet.
Ensemble 329.*



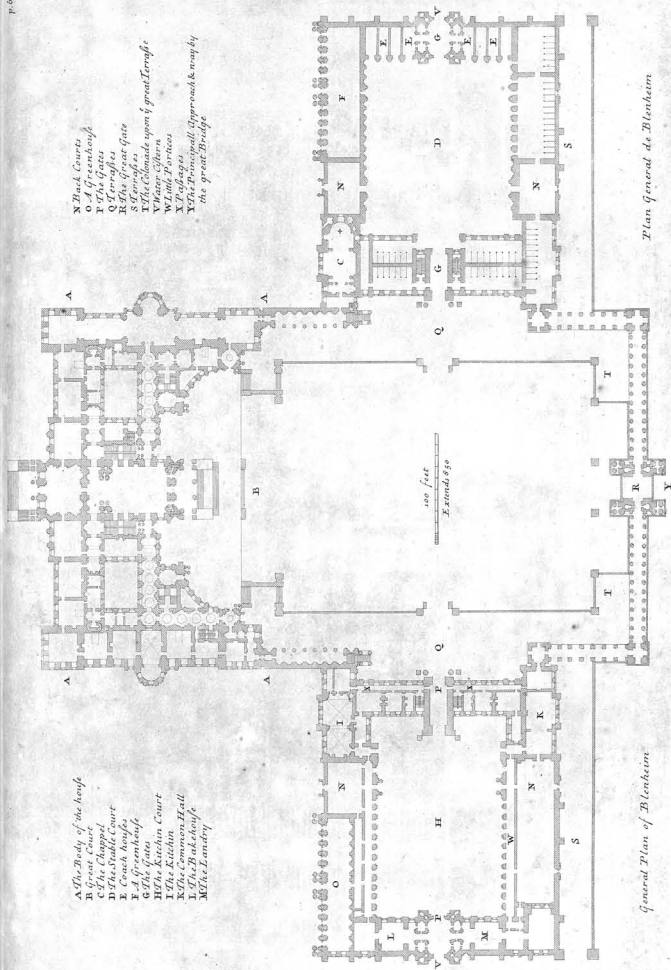
The East Front of BLENHEIM Castle Designed by S^r John Vanbrugh K^t

Elevation Orientale Du Chateau de BLENHEIM

C^a Campbell Delin.

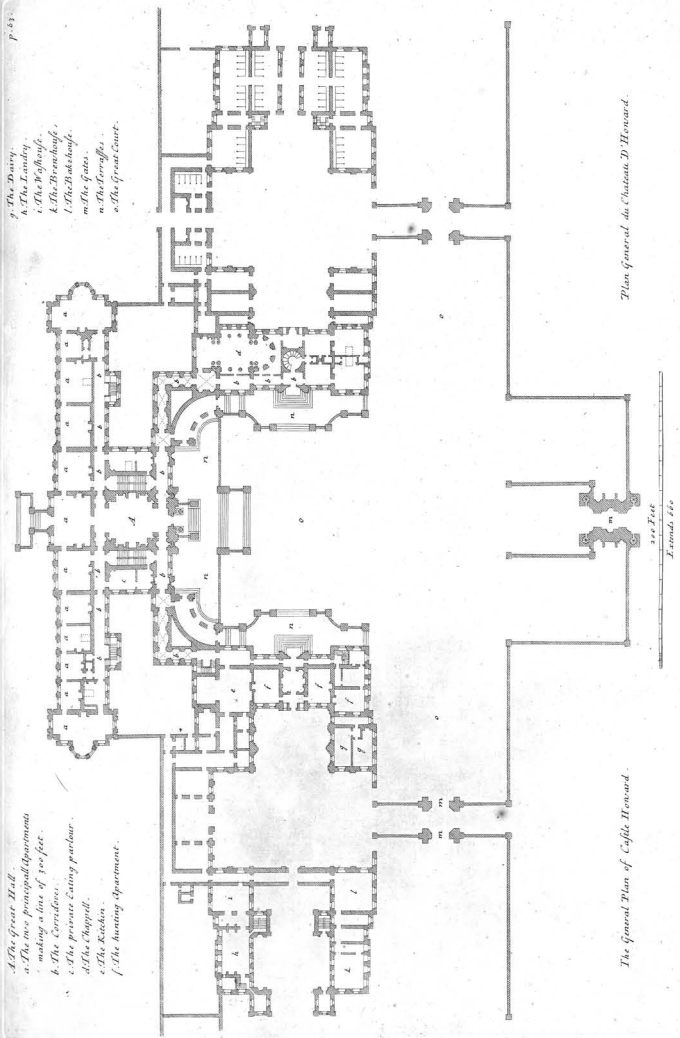
Extends 192.

a Scale of 100 Feet



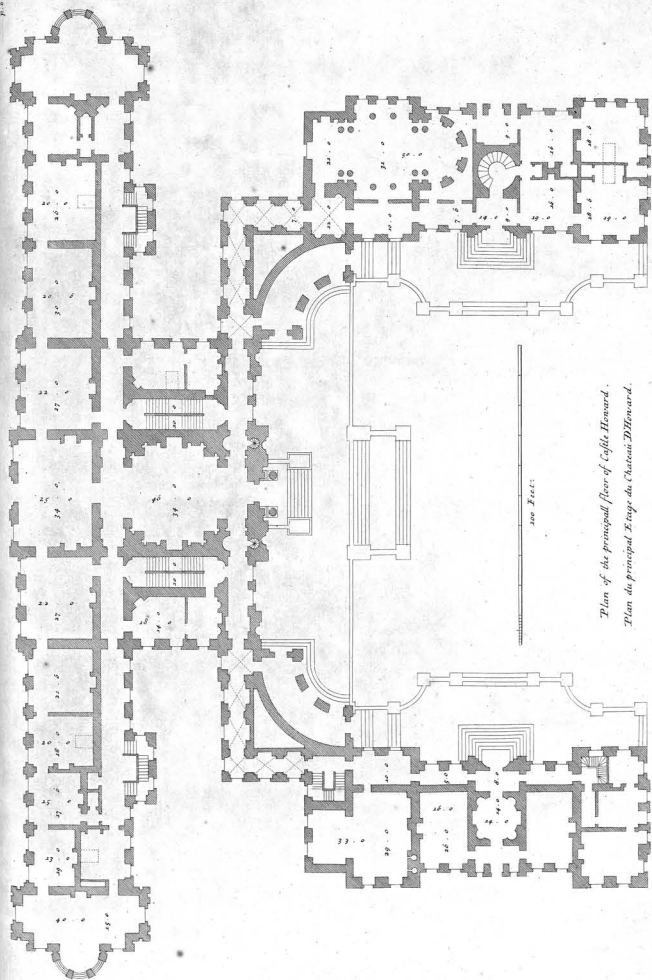
- A. The Great Hall.*
a. The two principal apartments making a line of 300 feet.
b. The Corridors.
c. The private dining parlour.
d. The Chapel.
e. The Kitchen.
f. The hunting apartment.

- g. The Dairy.*
h. The Laundry.
i. The Wychouse.
k. The Brewhouse.
l. The Bakehouse.
m. The gates.
n. The Terraces.
o. The Great Court.

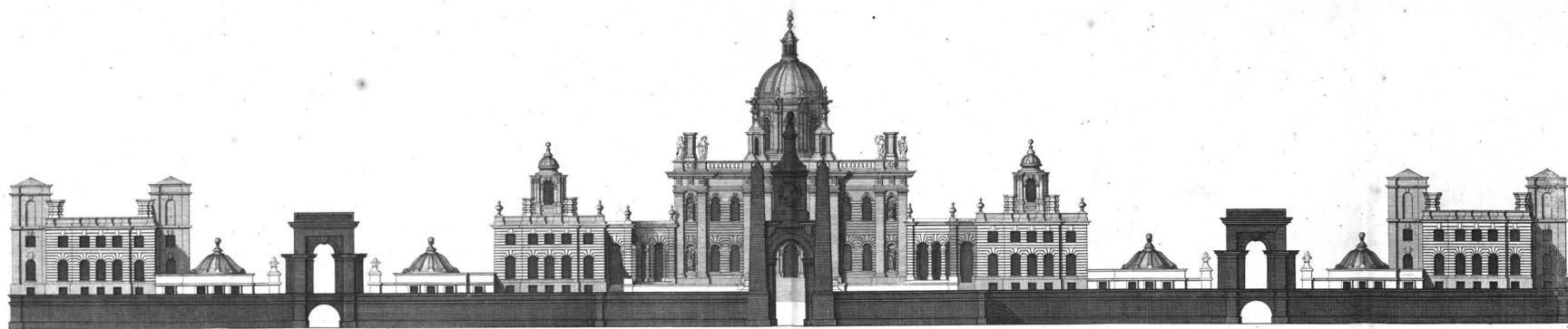


Plan general du Chateau D'Henward.

The General Plan of Castle Henward.



Plan of the principal floor of Castle Howard.
Plan du principal étage du Château d'Howard.

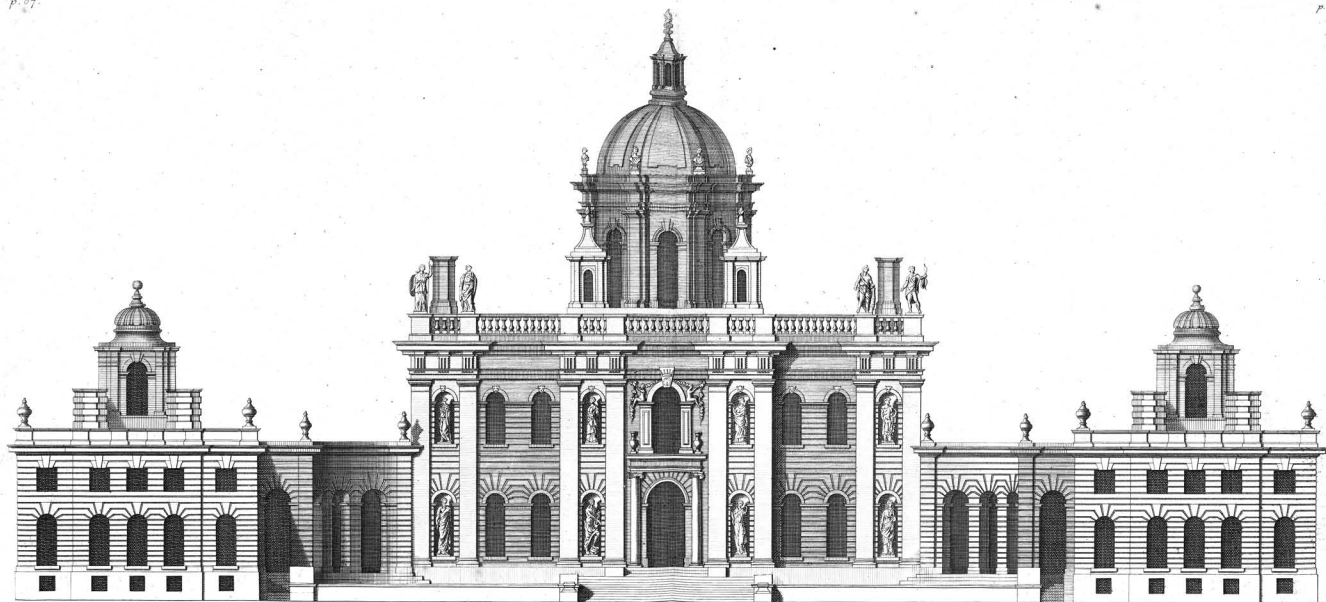


200 Feet  Extends 667

The Elevation of the general Front of Castle Howard in Yorkshire the Seat of the Rth Honourable the Earl of Carlisle to whom this Plate is most humbly Inscribed. Designed by S^r J. Vanbrugh R^s

Elevation General du Chateau D'Howard dans la Comté de York.

Jⁿ Campbell Delin.



40 Feet Extends 254

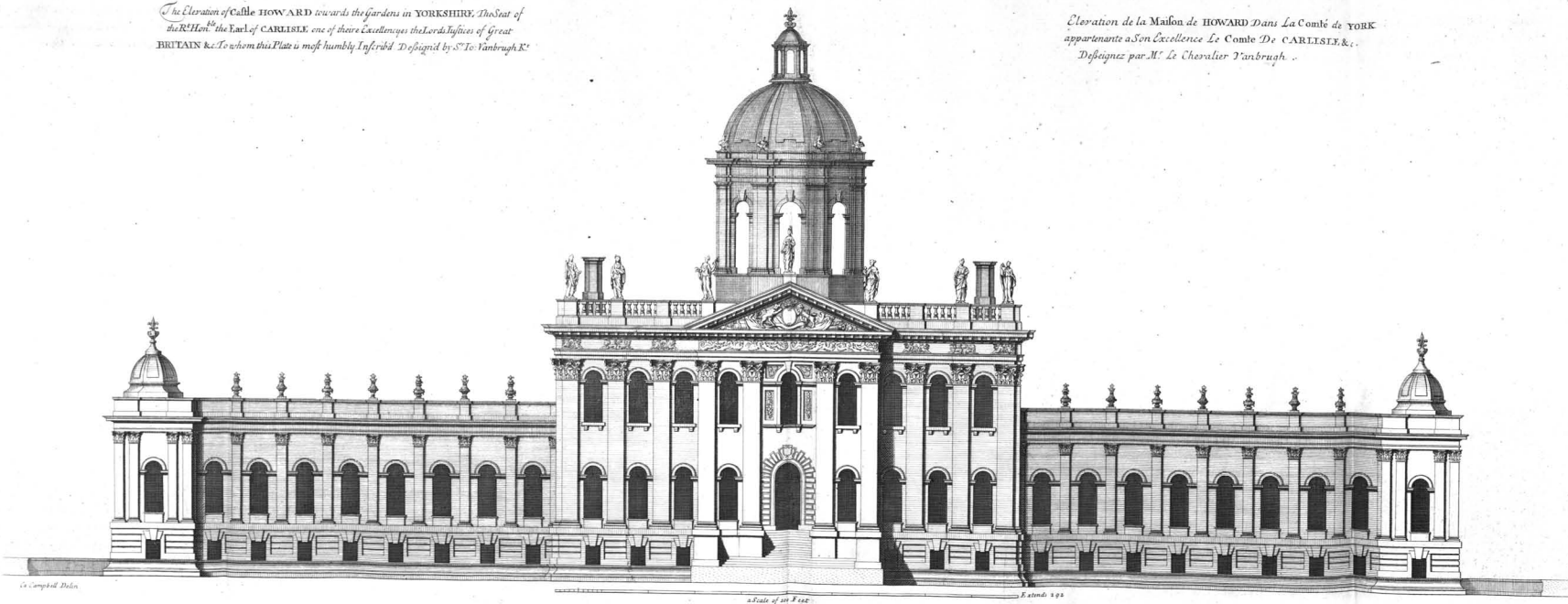
The Front to the Court of Castle Howard. Designed by S^r J. Vanbrugh K^t

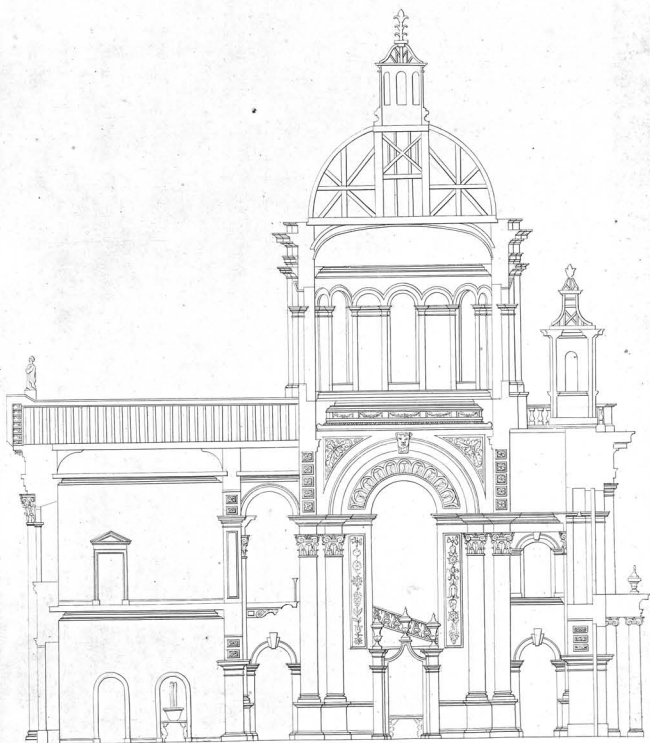
Elevation du Chateau d'Howard du costé de la Cour.

C. Campbell Delin.

*The Elevation of Castle HOWARD towards the Gardens in YORKSHIRE, The Seat of
the Rth Hon^{ble} the Earl of CARLISLE, one of those Excellencies the Lords Justices of Great
BRITAIN &c. To whom this Plate is most humbly Inferred. Designed by S^r T^o Vanbrugh E^t*

*Elevation de la Maison de HOWARD Dans La Comté de YORK
appartenante à Son Excellence Le Comte De CARLISLE &c.
Dessignée par M^r Le Chevalier Vanbrugh.*

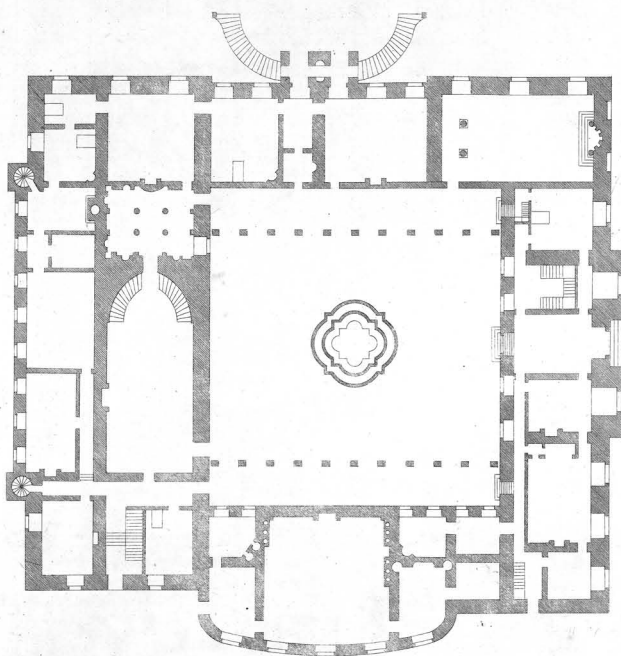




40 Feet  Extends 89

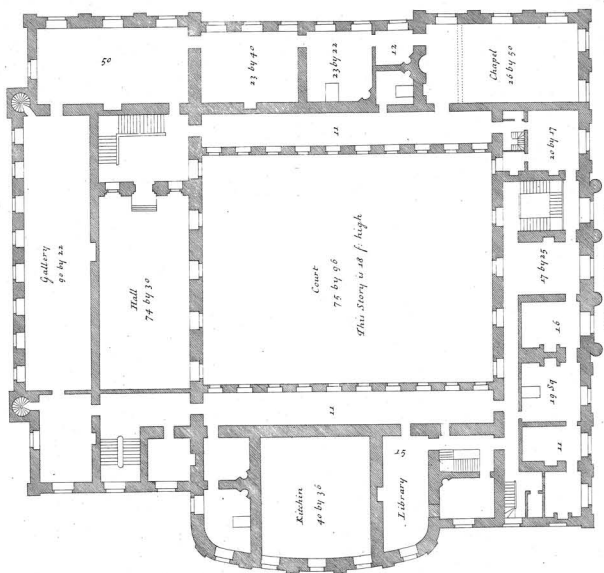
The Section of Castle Howard.

Profil du Chateau D Howard.



Plan du premier Etage

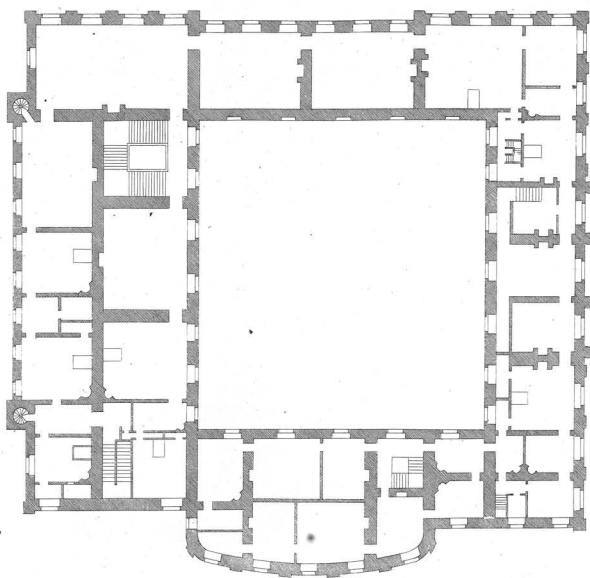
The plan of 1st story of Chisworth



Plan du Second Etage de Chatsworth.

The Plan of the Second Story of Chatsworth.

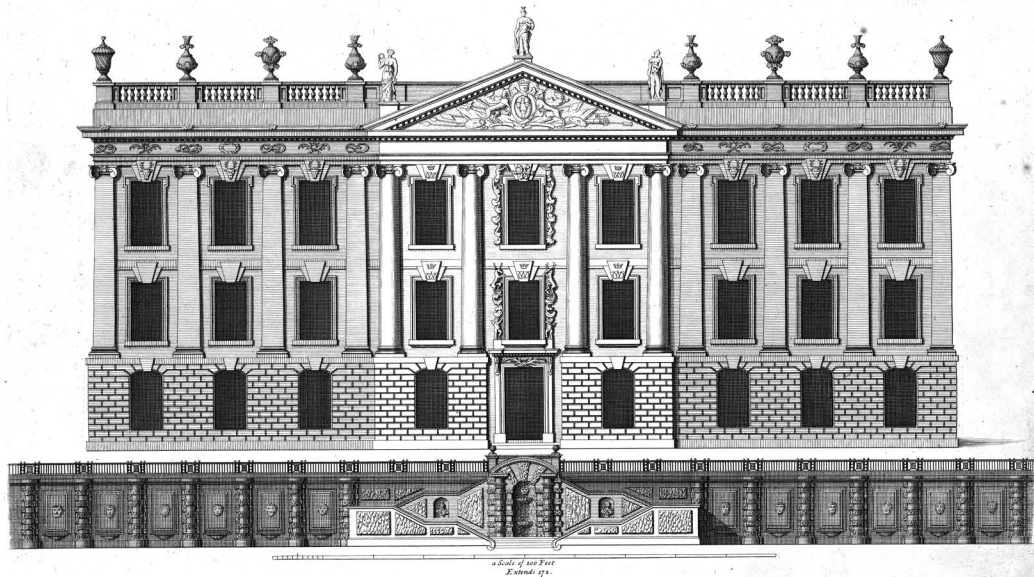
*a scale of 40 Feet.
Extends 270.*



The plan of the third story of Chatsworth

— a foot of 4 1/2 feet

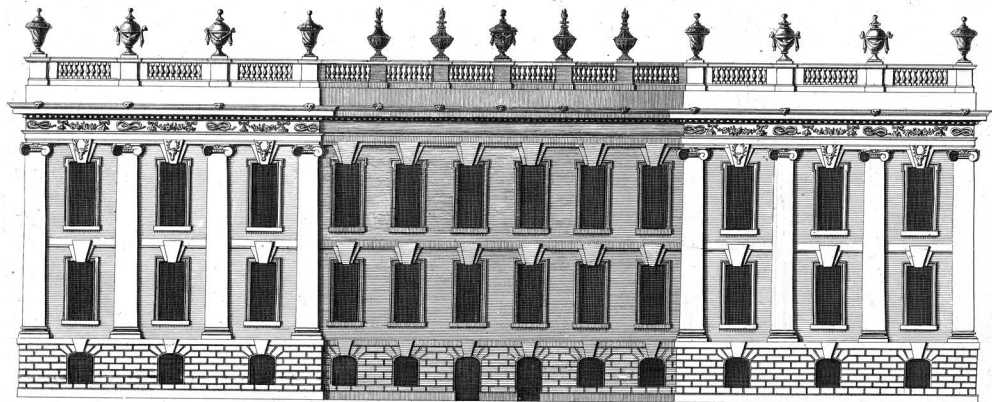
plan du troisième étage



The West Prospect of CHATSWORTH in DARBYSHIRE, the Seat of his grace the Duke of DEVONSHIRE, &c Lord Steward of his MAJESTY'S Household, and Knight of the most Noble Order of the Garter. To whom this Plate is most humbly Inscrib'd.

Elevation Occidentale du Chateau de CHATSWORTH dans la Comté de DERBYE. Inventé par M^r Talman.

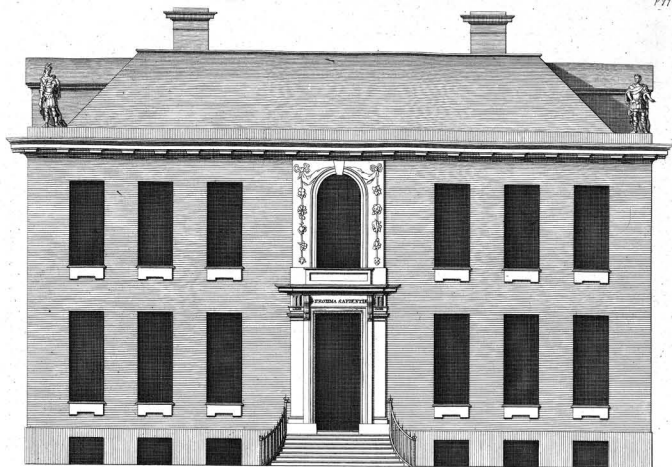
Ex. Autographe D. J. Thomlin.



a Scale of 100 Feet
Extends 190 f.

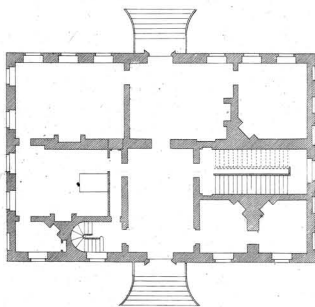
The South front of Chatsworth.
Elevation Meridional de Chatsworth.

Edw. Campbell Delin.

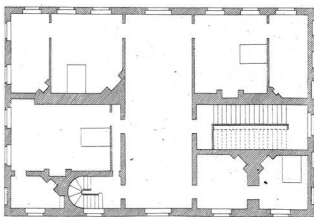


Extends 72
a Scale of 40 Feet

The Prospect to the Gardens of the Hon^{ble} JAMES JOHNSTON Esq^r his House at TWITTENHAM in the County of MIDDLESEX . 1710 .
Elevation Du côté Du Jardin De La Maison Du Monsieur Mons^{ieur} JOHNSTON a TWITTENHAM Dans La Comté De MIDDLESEX .



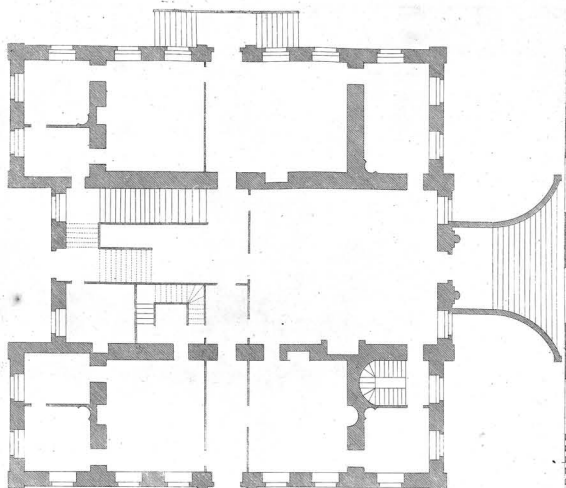
The Plan of the first Floor.
Plan de la première Etage.



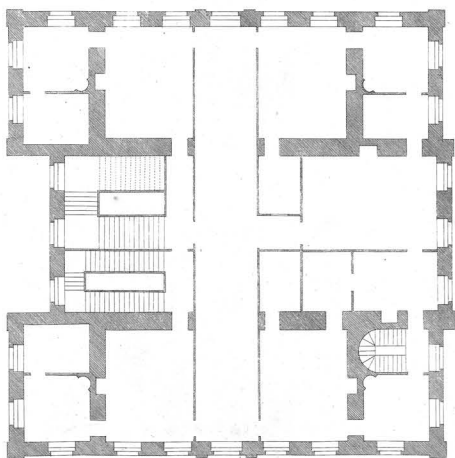
The Plan of the Chamber Floor.
Plan de la Seconde Etage.

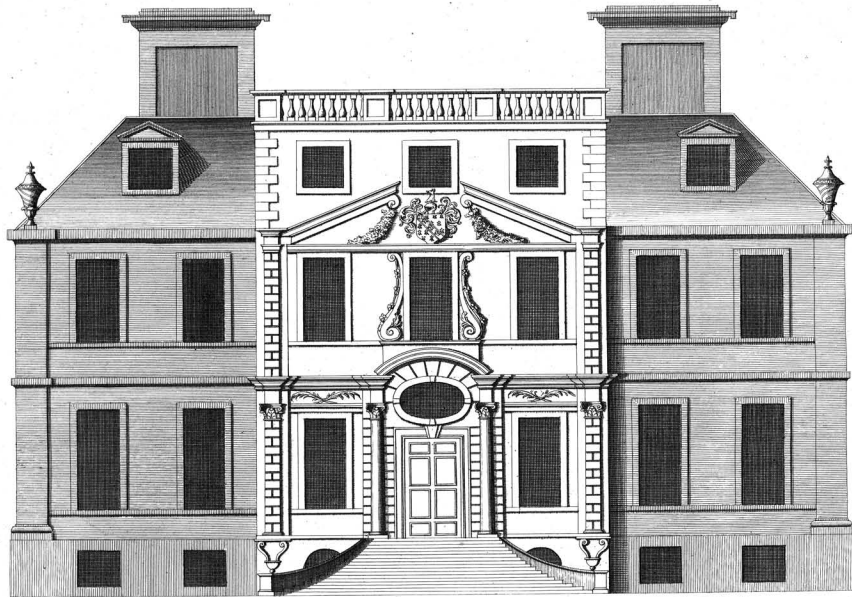
W. Campbell Delin.

The plan of the principal story of St. Walter Yonge Bae' his House in Devonshire
Plan du premier étage

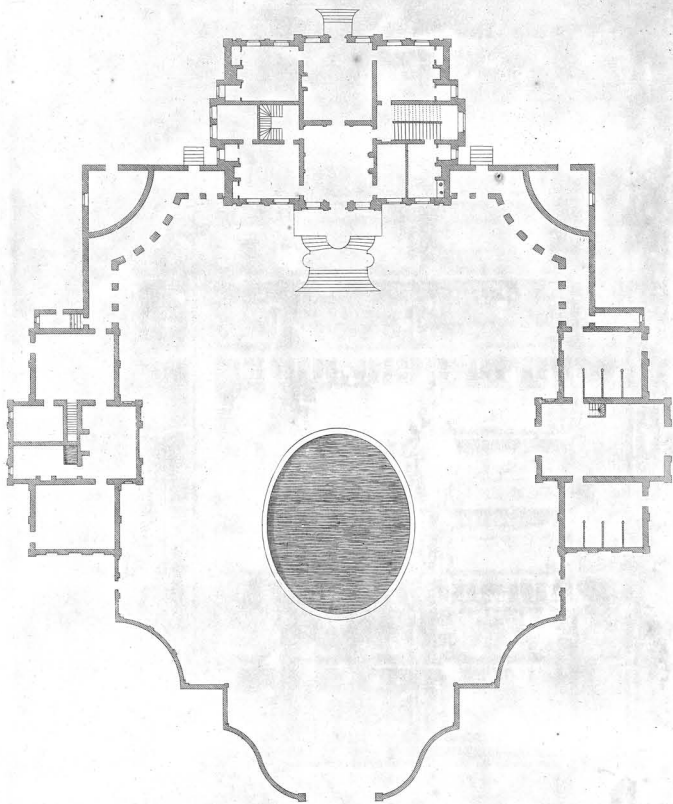



The plan of the Chamber floor
plan du second étage



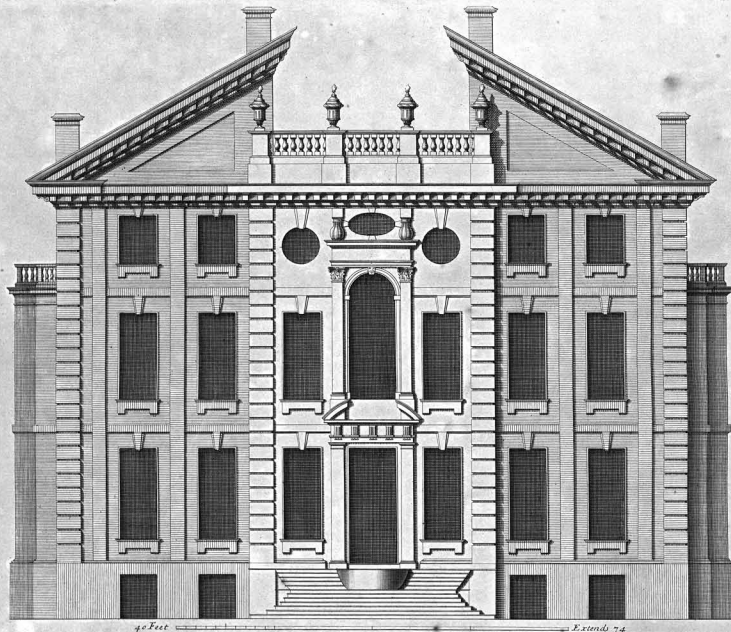


*The Elevation of S^r Walter Yonge Bart his house in Devonshire To whom it plate is most humbly inscrib'd
 Elevation de La Maison du M^r Yonge Chevalier Bart dans La Comté de Devon.*

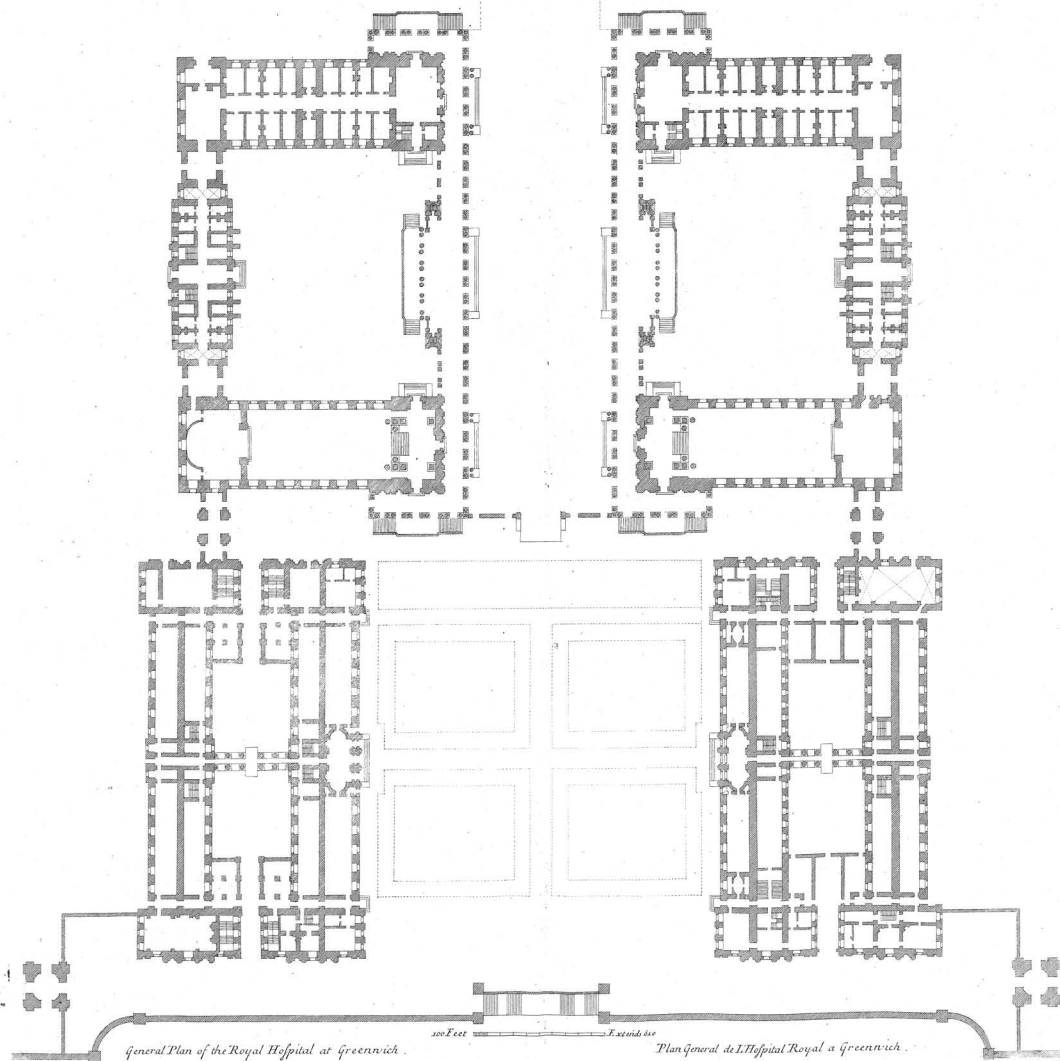


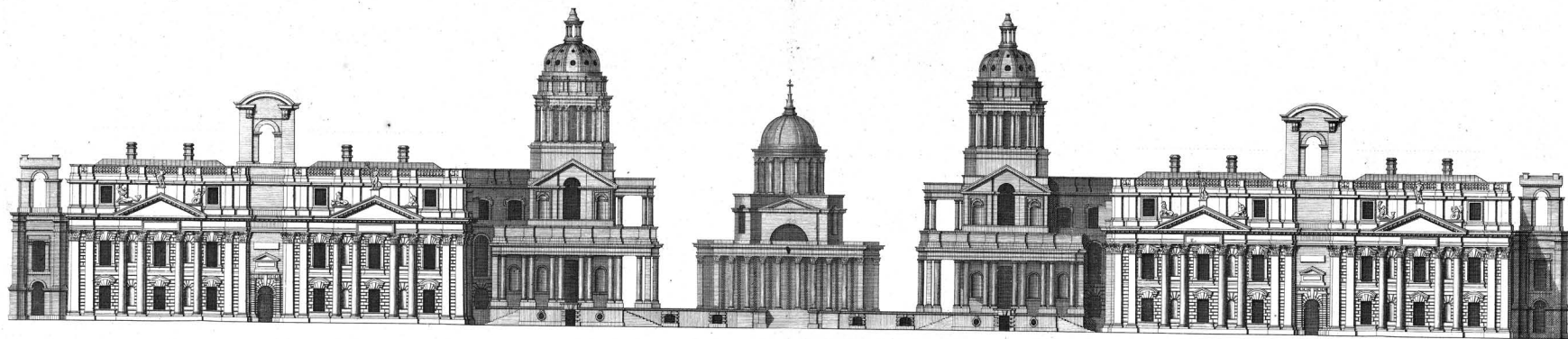
40 Feet  Extends 188

Plan of Ron-hampton house
Plan de la Maison de Ron-hampton



The Elevation of Ronchamp house in Surrey the Seat of Thomas Cary Esq. To whom this Plate is most humbly Inscribed. Invented by Thomas Archer Esq. 1722
Elevation de la Maison de Ronchamp dans la Comté de Surrey.



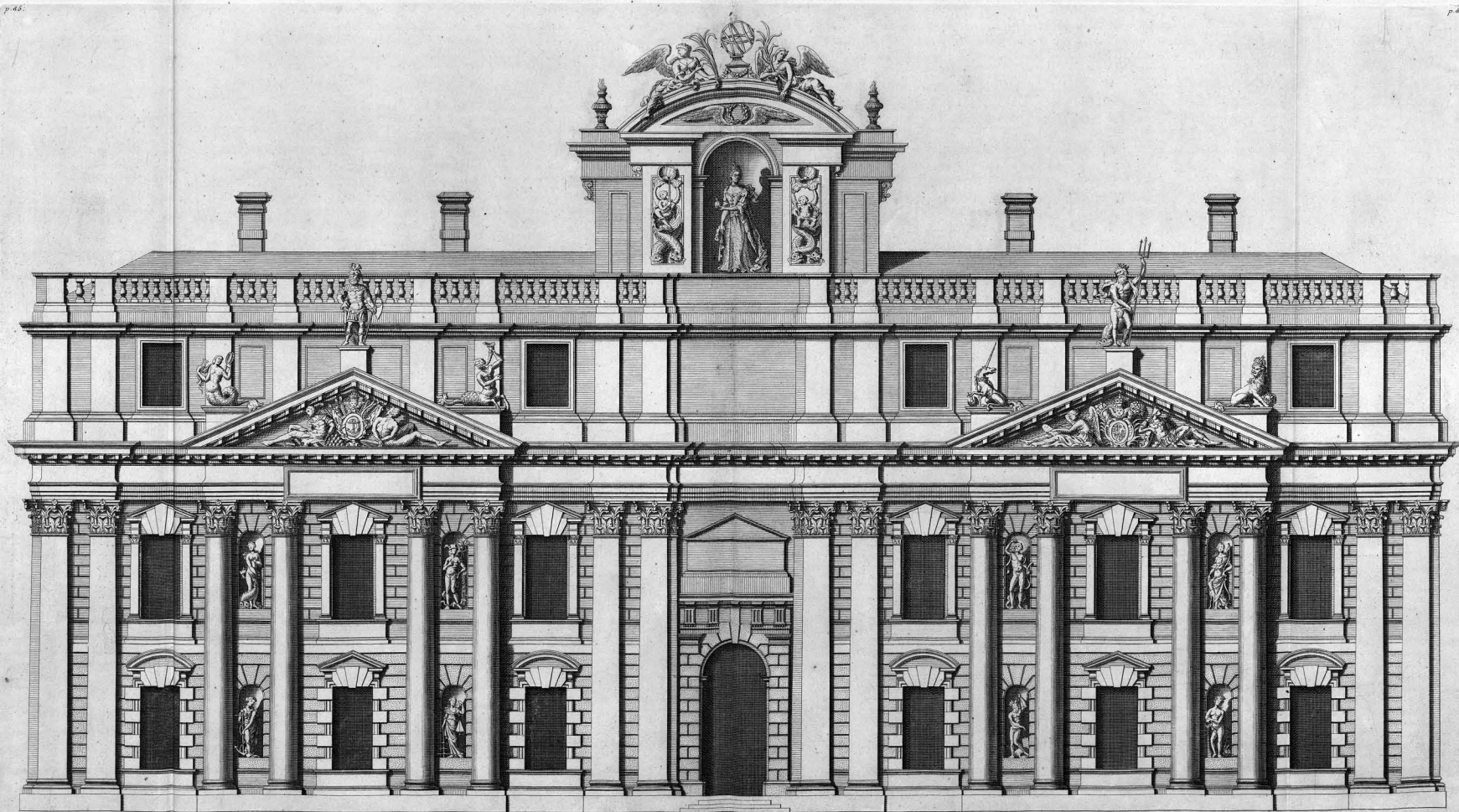


a Scale of 100 Feet  Extends 670

The general Front of the Royal Hospital at Greenwich, is most humbly Inscrib'd to the Hon^{ble} Mathew Aylmer Esq^r, Governour of the Hospital and Admiral of his Majesty's Fleet &c.

Elevation General de L'Hospital Royal a Greenwich.

C^a Campbell Delin.



The Elevation of one of the double Pavilions of the Royal Hospital at Greenwich to the River.
It is most humbly inscribed to his Royal Highness the Prince of Wales &c.

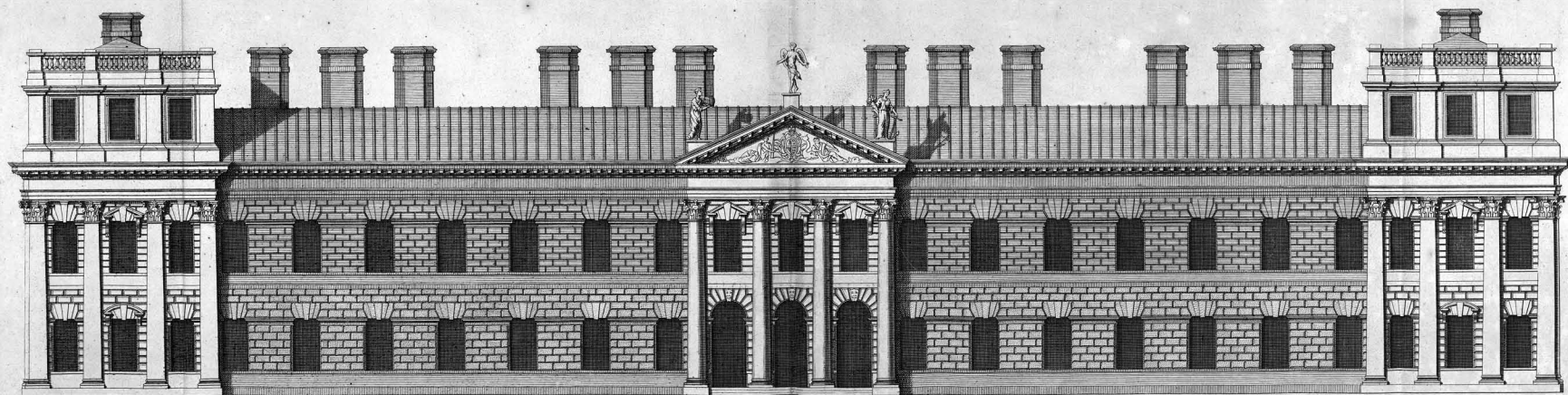
J. Campbell delin.

A Scale of 30 Feet

Estimé 172

J. Jones sculp.

Elevation de l'un des double Pavillons de l'Hôpital Royal à Greenwich du côté de la Rivière.
Très humblement dédié à son Altesse Royale le Prince de Galles &c.



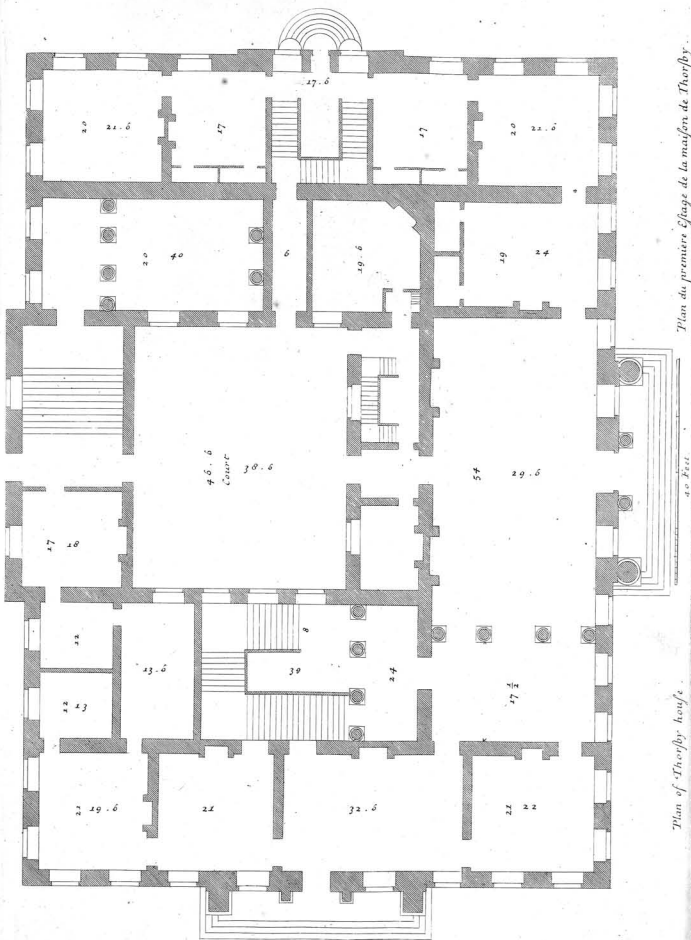
60 Feet

Exterior 180

*The Elevation of one Wing of the Great Court of Greenwich Hospital
is most Humbly Inscribed to the R^{ts} Honourable the Lord Somers &c.*

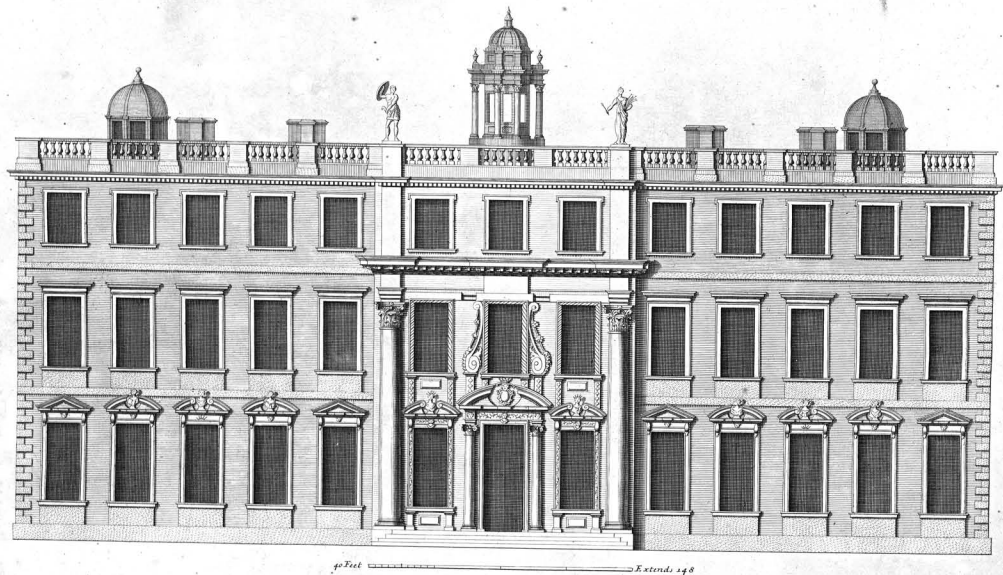
By Campbell Dalton.

Elevation d'une Aile du côté du Grand Court de l'Hôpital Royal à Greenwich.

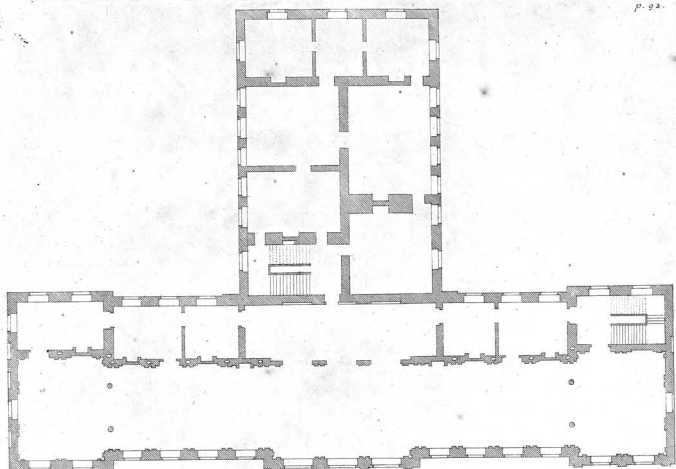


Plan du première Etage de la maison de Thorsby.

Plan of Thorsby house.

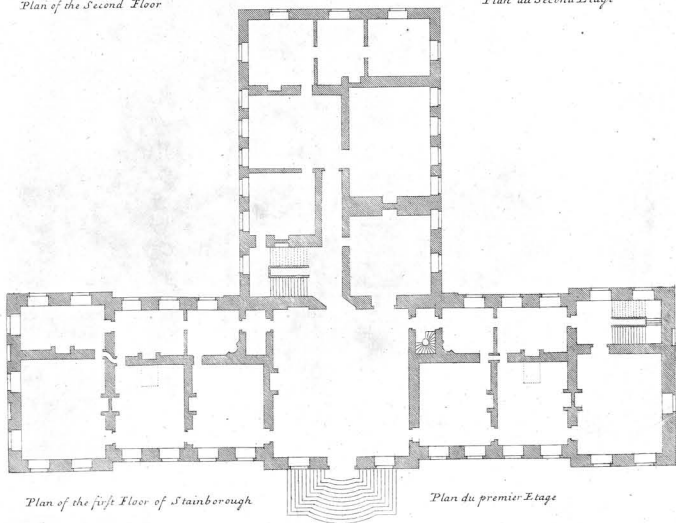


The Elevation of Thorby house in the County of Nottingham the Seat of the R^Hon^{ble} the Marquiss of Dorchester to whom this plate is most humbly Inscribed —
Elevation de la Maison de Thorby dans la Comté de Nottingham.



Plan of the Second Floor

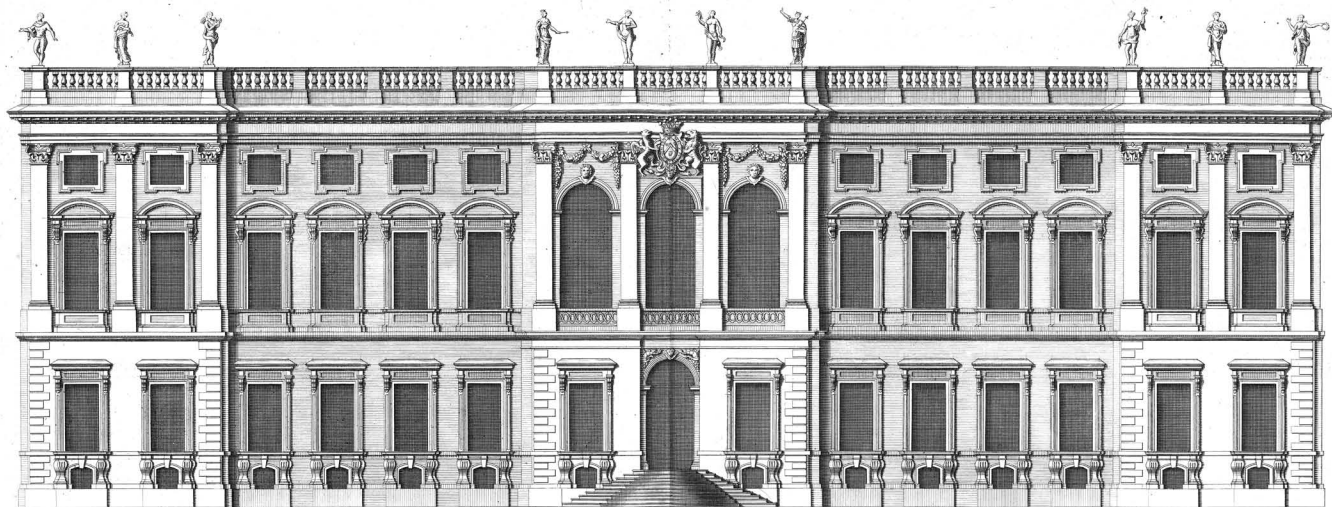
Plan du Second Etage



Plan of the first Floor of Stainborough

Plan du premier Etage

40 Feet  Extends 180

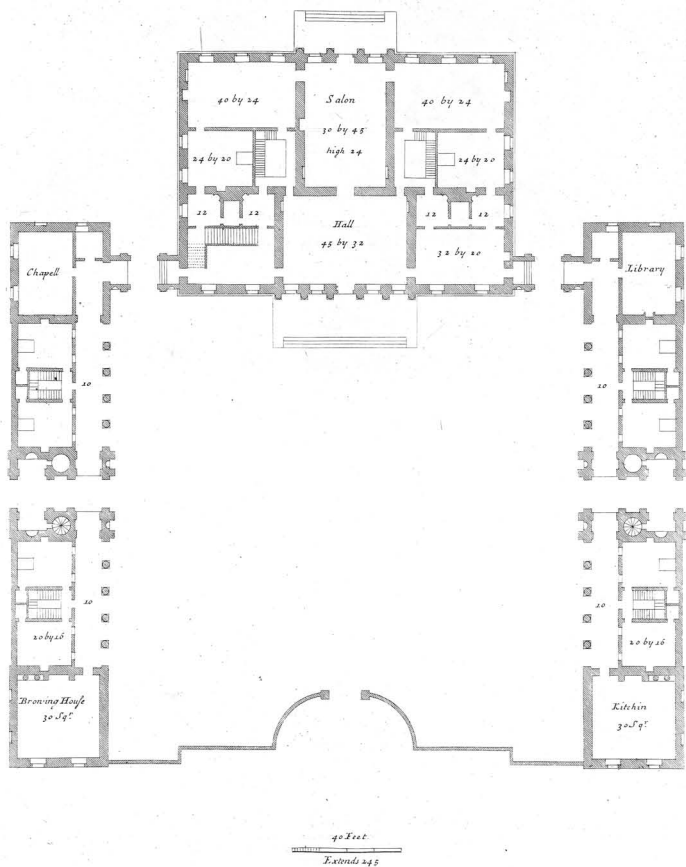


40 Feet ————— Extends 180

The Elevation of Stainborough in Yorkshire the Seat of the R^t Hon^{ble} The Earl of Strafford &c. Knight of the most Noble Order of the Garter. to whom this Plate is most humbly Inscribed.

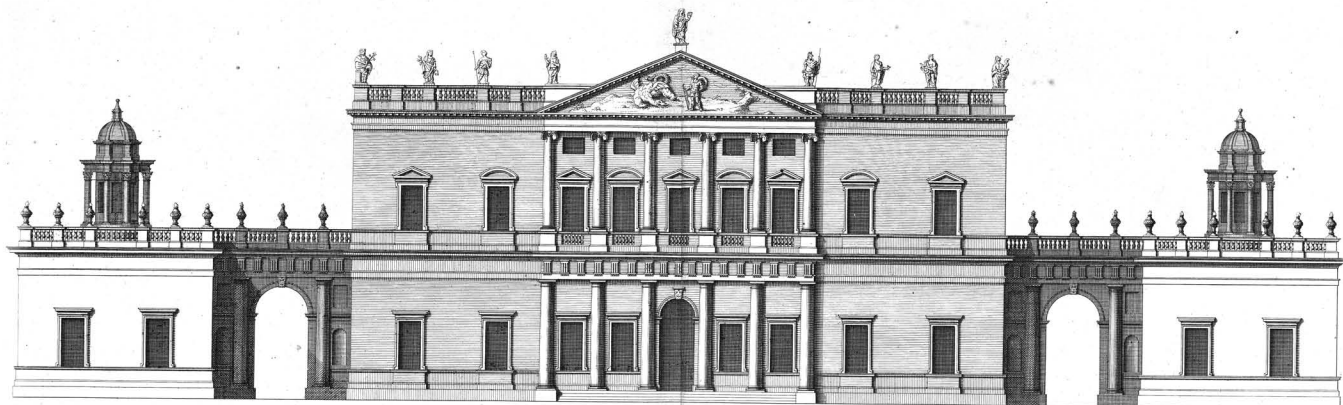
Elevation du Chateau de Stainborough dans la Comté de York.

Ca. Campbell Delin.



General Plan of a new Design for the Lord Percival.

Plan d'un Nouveau Dessein pour My Lord Percival.

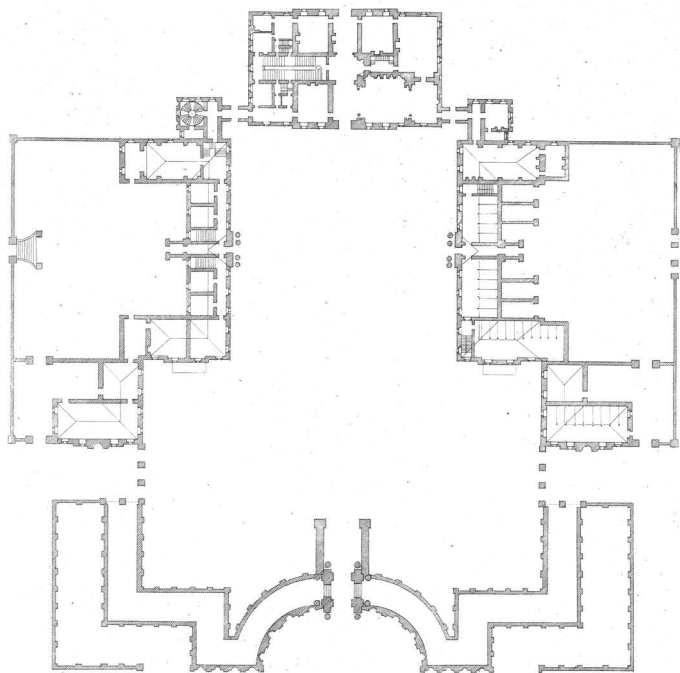


a Scale of 40 Feet ————— Extends 245

This New Design of my Invention is most humbly Inferred to the R^t Hon^{ble} the Lord Percival &c.

Elevation d'un Nouveau Dessein de mon Invention Dedié a My Lord Percival &c.

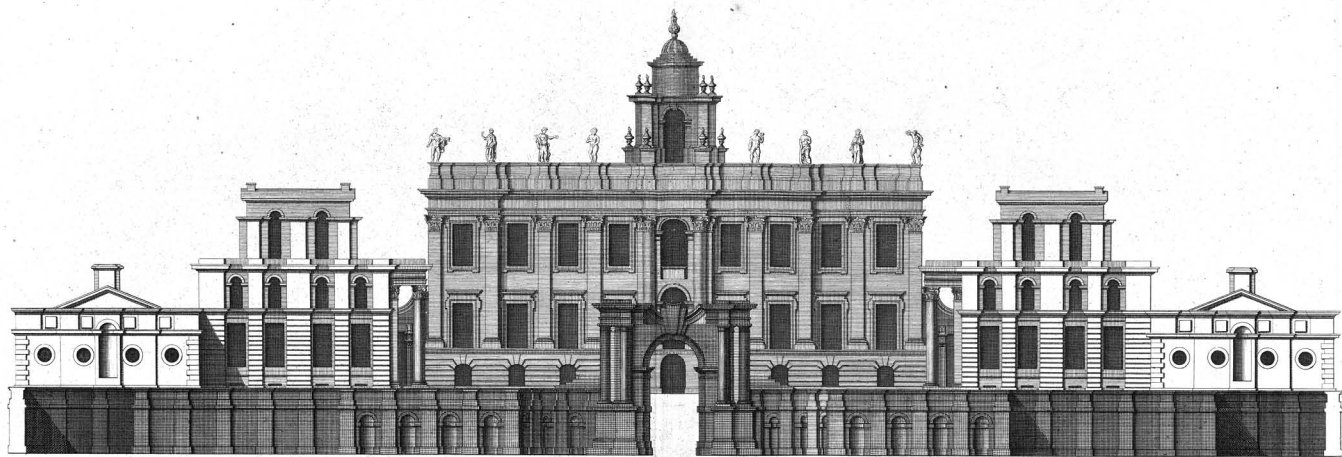
C. Campbell Insc. et Delin.




100 Feet  Extends 370

Plan of the Lord Leinspster's house :

Plan de la Maison du my Lord Leinspster.



60 Feet  Extends 320

The Elevation of the R.^t Honourable the Lord Leinster's house in Northamptonshire to whom this Plate is most humbly Inscribed.

Elevation de la Maison du my Lord Leinster dans la Comté de Northampton.

M. Frankforter Inv.

C. Campbell Delin.